

Overview and Scrutiny



Sustainable Development Select Committee Agenda

7.00 pm, Monday, 24 April 2023
Civic Suite, Lewisham Town Hall, London SE6 4RU

For more information contact: Timothy Andrew
(timothy.andrew@lewisham.gov.uk) 020 8314 7916

This meeting is an open meeting and all items on the agenda may be audio recorded and/or filmed.

Part 1

Item	Pages
1. Election of the Chair and Vice-Chair	
2. Minutes of the meeting held on 10 January 2023	3 - 6
3. Declarations of interest	7 - 10
4. Responses from Mayor and Cabinet Please see section five of the attached report to Mayor and Cabinet.	11 - 34
5. Implementation of the transport strategy: walking, cycling and healthy neighbourhoods	35 - 64
6. Parks and Open Spaces update	65 - 86
7. Select Committee work programme	87 - 104

Sustainable Development Select Committee Members

Members of the committee, listed below, are summoned to attend the meeting to be held on Monday, 24 April 2023.

Jeremy Chambers, Monitoring Officer
Thursday, 13 April 2023

<p>Members</p> <p>Councillor James Royston</p> <p>Councillor Edison Huynh</p> <p>Councillor Tauseef Anwar</p> <p>Councillor Liam Curran</p> <p>Councillor Sian Eiles</p> <p>Councillor John Paschoud</p> <p>Councillor Eva Stamirowski</p> <p>Councillor Rudi Schmidt (ex-Officio)</p> <p>Councillor Ese Erheriene (ex-Officio)</p>	
--	--

Agenda Item 2

Minutes of the Sustainable Development Select Committee

Tuesday, 10 January 2023 At 7.00pm

In attendance: Councillors James Royston (Chair), Edison Huynh (Vice-Chair), Liam Curran, Sian Eiles, Aisha Malik-Smith, Oana Olaru and Mark Ingleby

Apologies: Councillor Tauseef Anwar

Also Present: Councillor Brenda Dacres (Deputy Mayor and Cabinet Member for Housing Development and Planning), Councillor Louise Krupski (Cabinet Member for Environment and Climate), Timothy Andrew (Scrutiny Manager), Patrick Dubeck (Director of Inclusive Regeneration), David Syme (Head of Strategic Planning) and Emma Talbot (Director Of Planning)

Also Present Virtually: Charlotte Harrison (Head of Strategic Housing and Regeneration) and Martin O'Brien (Climate Resilience Manager)

NB: Those Councillors listed as joining virtually were not in attendance for the purposes of the meeting being quorate, any decisions taken or to satisfy the requirements of s85 Local Government Act 1972

1. Minutes of the meeting held on 30 November 2022

- 1.1 It was agreed that the minutes of the meeting held on 30 November be approved as an accurate record.
- 1.2 **Resolved:** that the minutes of the meeting on 30 November be agreed as an accurate record.

2. Declarations of interest

- 2.1 There were none.

3. Responses from Mayor and Cabinet

- 3.1 There were none.

4. Local Plan update

- 4.1 Emma Talbot (Director of Planning) introduced a presentation and verbal update on the development of the Local Plan. She noted the amended timetable for the approval and adoption of the plan and recapped on the stages through which the plan would need to progress before it could be agreed. Emma also outlined the requirements for the development of a sound local plan and the subjects, policy areas and issues that fell within the remit of the new plan.
- 4.2 Emma Talbot and David Syme (Head of Strategic Planning) responded to questions from the Committee - the following key points were noted:
 - The strategic housing needs assessment for the plan was developed in 2021 (before recent census 2021 data on housing tenure was available) - consideration would be given to any significant changes arising as a result of the new data - whilst recognising that all of the evidence base

for the plan represented a 'snapshot' in time and could not be repeatedly updated.

- There were opportunities in the site allocations policies to identify locations for affordable workspaces.
- A number of planning allocations had been consolidated into use class 'E' for 'town centre uses' which allowed some flexibility for mixed uses in town centre developments.
- The plan included policies to protect existing affordable workspaces and to develop new spaces, where feasible.
- The Council's online portal for consultations (Citizen Space) would be used for the upcoming consultation - alongside the Department's existing forums and channels.
- There were significant differences between the regulation eighteen and regulation nineteen consultations on the Plan. Regulation eighteen allowed for comments on the content of the plan - and involved extensive consultation. Regulation nineteen was a formal legal technical 'test of soundness'

4.3 **Resolved:** that the update be noted.

5. Climate emergency action plan

5.1 Martin O'Brien (Climate Resilience Manager) introduced the report – outlining the steps taken to develop and approve the plan (including its annual scrutiny and submission to Mayor and Cabinet). Martin also highlighted the overall positive picture presented by the action plan. It was also noted that there had been a transformation in the approach being taken by the Council in responding to the climate emergency.

5.2 Martin O'Brien responded to questions from the Committee – the following key points were noted:

- Prioritisation of actions occurred as a result of differing factors – including: where the data indicated that there was most work to do; where funding was available and, actions that had broader benefits for the community and met the Council's strategic objectives.
- Housing was a significant contributor towards the borough's carbon emissions (particularly from gas used for heating).
- The Council's climate board brought together officers from across the Council to align the actions in the plan with the Council's wider objectives.
- The main trend for carbon emissions in the past fifteen years had been in the decarbonisation of the electricity grid due to the replacement of coal fired power stations with renewable or lower carbon alternatives. The same could not be said for gas.
- Gas could not be easily swapped with electricity for heating homes and businesses due to the cost – what was required was a major programme of retrofit to reduce consumption – with the remaining heating requirement being met by alternative zero carbon heating. However – this would require retrofit at scale – which was not currently available.
- There was very little in way of support for residents to retrofit their homes (unless they were eligible for means tested benefits).
- The Council provided information for householders who wanted to improve their homes – but it was recognised that the current activity was not on a scale which would enable Lewisham to meet net zero by 2030.
- The data from the Department from Business, Energy and Industrial Strategy (BEIS) included 'scope one and two emissions' – which included

energy supplied to buildings and emissions data from surveys of vehicle numbers. It did not take account of wider consumption emissions – including travel outside of the borough and consumption of resources manufactured elsewhere.

- The Council could do more to quantify actions in the plan. Corporate carbon emissions were measured – and would be reported on the website.
- Further work could take place with partner organisations in the borough to bring together a wider set of actions and information in the lead up to 2030.
- Homes in the private rented sector were often the worst performing in terms of energy efficiency and had some of the most intractable problems.
- There were significant challenges in bringing private rented sector housing up to standard – particularly given the relatively loose regulation. It was quite straightforward to get exemption from the requirement to meet minimum energy efficiency standards – and the government had not indicated how it was willing to increase standards.
- There was some funding available to improve standards – which the Council had publicised to landlords.
- Further work needed to take place to understand the equalities issues around the climate emergency.
- It would be difficult to quantify emissions from community food growing in Lewisham (which avoided importing food) – but reducing carbon emissions was only one part of improving people’s lives and wellbeing.
- Additional information would be included about the options for improving active transport options around Deptford Church Street.
- It was recognised that the status of actions that were ‘ongoing’ was imprecise – further work would take place to determine how this could be improved.
- The Council had committed to developing a housing retrofit strategy – which would help identify projects that could be delivered if funding became available.
- It was recognised that additional sources of funding needed to be secured in order to diversify the options for delivering projects at scale.

5.3 Councillor Louise Krupski (Cabinet Member for Environment and Climate) was invited to address the Committee – she noted that she had encouraged officers to produce an easy to read version of the plan. Further work would take place to improve the information about the delivery of the action plan.

5.4 **Resolved:** that the Committee would refer its views to Mayor and Cabinet as follows -

- The Committee welcomes the update from officers and notes the good practice on which the plan has been developed. However, the Committee is unclear about the likelihood of achieving those actions which are identified in the plan as ‘ongoing’.
- The Committee recommends that the Council should seek to further risk assess, prioritise, and effectively categorise the actions in the plan. Members believe that there needs to be an enhanced focus on how and when the actions will be delivered, which may include an assessment of the work that needs to take place to achieve this.
- The Committee believes that, where priority actions have already been agreed upon, then this should be clearly communicated to members and the relevant stakeholders. Furthermore, the Committee believes that consideration must be given to ensuring there is transparency around the

tasks of risk assessing, prioritising, and categorising other 'ongoing' actions.

6. Catford Town Centre programme

6.1 Charlotte Harrison (Head of Strategic Housing and Regeneration) introduced the update – highlighting recent developments in Catford Town Centre.

6.2 Charlotte Harrison and Patrick Dubeck (Director of Inclusive Regeneration) responded to questions from the Committee – the following key points were noted:

- Work was taking place to develop the public art work for Holbeach Road improvements.
- Everything in the report was part of the development framework for Catford. The programme was envisaged as a 15-20 year plan for development.
- The masterplan was the most important part of the scheme for ensuring quality design in Catford Town Centre. Work was taking place at present on a delivery strategy for the plan – which would assess how best to leverage funding from development partners.
- Those projects that the Council delivered itself as part of the phase one were of critical importance to the future of the scheme – and demonstrated the ambition for high quality design.
- The framework indicated development potential for sites in the Town Centre – but did not have control over the timing of the developments on Catford Island or on the Halford/Wickes development site.
- The financial climate had changed since the development of the framework.

6.3 **Resolved:** that the report be noted.

7. Select Committee work programme

The meeting ended at 21:00

Chair:

Date:



Sustainable Development Select Committee

Declarations of Interest

Date: 2023-24

Key decision: No

Class: Part 1

Ward(s) affected: None specific

Contributor: Jeremy Chambers (Director of Law, Governance and Elections)

Outline and recommendations

Members are asked to declare any personal interest they have in any item on the agenda.

1. Summary

1.1. Members must declare any personal interest they have in any item on the agenda. There are three types of personal interest referred to in the Council's Member Code of Conduct:

- (1) Disclosable pecuniary interests
- (2) Other registerable interests
- (3) Non-registerable interests.

1.2. Further information on these is provided in the body of this report.

2. Recommendation

2.1. Members are asked to declare any personal interest they have in any item on the agenda.

3. Disclosable pecuniary interests

3.1 These are defined by regulation as:

- (a) Employment, trade, profession or vocation of a relevant person* for profit or gain
- (b) Sponsorship –payment or provision of any other financial benefit (other than by the Council) within the 12 months prior to giving notice for inclusion in the register in respect of expenses incurred by you in carrying out duties as a member or towards your election expenses (including payment or financial benefit from a Trade Union).
- (c) Undischarged contracts between a relevant person* (or a firm in which they are a partner or a body corporate in which they are a director, or in the securities of which they have a beneficial interest) and the Council for goods, services or works.
- (d) Beneficial interests in land in the borough.
- (e) Licence to occupy land in the borough for one month or more.
- (f) Corporate tenancies – any tenancy, where to the member’s knowledge, the Council is landlord and the tenant is a firm in which the relevant person* is a partner, a body corporate in which they are a director, or in the securities of which they have a beneficial interest.
- (g) Beneficial interest in securities of a body where:
 - (a) that body to the member’s knowledge has a place of business or land in the borough; and
 - (b) either:
 - (i) the total nominal value of the securities exceeds £25,000 or 1/100 of the total issued share capital of that body; or
 - (ii) if the share capital of that body is of more than one class, the total nominal value of the shares of any one class in which the relevant person* has a beneficial interest exceeds 1/100 of the total issued share capital of that class.

*A relevant person is the member, their spouse or civil partner, or a person with whom they live as spouse or civil partner.

4. Other registerable interests

4.1 The Lewisham Member Code of Conduct requires members also to register the following interests:

- (a) Membership or position of control or management in a body to which you were appointed or nominated by the Council
- (b) Any body exercising functions of a public nature or directed to charitable purposes, or whose principal purposes include the influence of public opinion or policy, including any political party
- (c) Any person from whom you have received a gift or hospitality with an estimated value of at least £25.

5. Non registerable interests

- 5.1. Occasions may arise when a matter under consideration would or would be likely to affect the wellbeing of a member, their family, friend or close associate more than it would affect the wellbeing of those in the local area generally, but which is not required to be registered in the Register of Members' Interests (for example a matter concerning the closure of a school at which a Member's child attends).

6. Declaration and impact of interest on members' participation

- 6.1. Where a member has any registerable interest in a matter and they are present at a meeting at which that matter is to be discussed, they must declare the nature of the interest at the earliest opportunity and in any event before the matter is considered. The declaration will be recorded in the minutes of the meeting. If the matter is a disclosable pecuniary interest the member must take not part in consideration of the matter and withdraw from the room before it is considered. They must not seek improperly to influence the decision in any way. **Failure to declare such an interest which has not already been entered in the Register of Members' Interests, or participation where such an interest exists, is liable to prosecution and on conviction carries a fine of up to £5000**
- 6.2. Where a member has a registerable interest which falls short of a disclosable pecuniary interest they must still declare the nature of the interest to the meeting at the earliest opportunity and in any event before the matter is considered, but they may stay in the room, participate in consideration of the matter and vote on it unless paragraph 6.3 below applies.
- 6.3. Where a member has a registerable interest which falls short of a disclosable pecuniary interest, the member must consider whether a reasonable member of the public in possession of the facts would think that their interest is so significant that it would be likely to impair the member's judgement of the public interest. If so, the member must withdraw and take no part in consideration of the matter nor seek to influence the outcome improperly.
- 6.4. If a non-registerable interest arises which affects the wellbeing of a member, their, family, friend or close associate more than it would affect those in the local area generally, then the provisions relating to the declarations of interest and withdrawal apply as if it were a registerable interest.
- 6.5. Decisions relating to declarations of interests are for the member's personal judgement, though in cases of doubt they may wish to seek the advice of the Monitoring Officer.

7. Sensitive information

- 7.1. There are special provisions relating to sensitive interests. These are interests the disclosure of which would be likely to expose the member to risk of violence or intimidation where the Monitoring Officer has agreed that such interest need not be registered. Members with such an interest are referred to the Code and advised to seek advice from the Monitoring Officer in advance.

8. Exempt categories

- 8.1. There are exemptions to these provisions allowing members to participate in decisions notwithstanding interests that would otherwise prevent them doing so. These include:-
- (a) Housing – holding a tenancy or lease with the Council unless the matter relates to your particular tenancy or lease; (subject to arrears exception)
 - (b) School meals, school transport and travelling expenses; if you are a parent or

guardian of a child in full time education, or a school governor unless the matter relates particularly to the school your child attends or of which you are a governor

- (c) Statutory sick pay; if you are in receipt
- (d) Allowances, payment or indemnity for members
- (e) Ceremonial honours for members
- (f) Setting Council Tax or precept (subject to arrears exception).

9. Report author and contact

- 9.1. Jeremy Chambers, Director of Law, Governance and Elections [Jeremy Chambers@lewisham.gov.uk](mailto:Jeremy.Chambers@lewisham.gov.uk), 020 83147648



Mayor and Cabinet

Climate Emergency Action Plan: update 2022/23

Date: 8 March 2023

Key decision: No

Class: Part 1

Ward(s) affected: All

Contributors: Climate Resilience Manager

Outline and recommendations

This report provides Mayor and Cabinet with an update on delivery of Lewisham's Climate Emergency Action Plan.

Timeline of engagement and decision-making

In February 2019 Lewisham councillors agreed a motion to declare a 'Climate Emergency' and asked Mayor and Cabinet to adopt an action plan by the end of 2019/20 with the aim of making the borough carbon neutral by 2030.

<https://councilmeetings.lewisham.gov.uk/documents/s62942/Motion%20%20proposed%20Cllr%20Anwar%20seconded%20Cllr%20Krupski.pdf>

Mayor and Cabinet agreed Lewisham's Climate Emergency Action Plan on 11 March 2020.

<https://councilmeetings.lewisham.gov.uk/documents/s72555/Climate%20Emergency%20Action%20Plan.pdf> and has reviewed progress on an annual basis:

- 10 March 2021 M&C Climate Emergency Action Plan update
<https://councilmeetings.lewisham.gov.uk/documents/s78637/Lewishams%20Climate%20Emergency%20Action%20Plan.pdf>
- 9 March 2022 M&C Climate Emergency Action Plan update
<https://councilmeetings.lewisham.gov.uk/documents/s96746/Climate%20Emergency%20update.pdf>

An update on the Climate Emergency Action Plan was reviewed by the Housing Select Committee on 5 January 2023 and by Sustainable Development Select Committee on 10 January 2023.

1. Summary

- 1.1. This report provides Mayor and Cabinet with an update on Lewisham's Climate Emergency Action Plan, published in March 2020.

2. Recommendations

- 2.1. Mayor and Cabinet is invited to review and comment on the update on progress and agree the response provided below to a referral made by the Sustainable Development Select Committee following its meeting on 10 January 2023.

3. Policy context

- 3.1. In 2016, the UK Government ratified the Paris Agreement, part of the United Nations Framework Convention on Climate Change, which commits countries to taking action to prevent the global average temperature increasing 2°C above pre-industrial levels. In 2019 the Climate Change Act 2008 (2050 Target Amendment) Order 2019¹ committed the UK to a legally binding target of net zero emissions by 2050. In 2021 the Government published its Net Zero Strategy setting out proposals to deliver the UK's commitment under the Paris Agreement. In the 2022 Autumn Statement the Government set a national ambition to reduce energy consumption by 15% by 2030, with a new Energy Efficiency Taskforce to drive improvement in energy efficiency in households, business and the public sector. The Autumn Statement also announced £6bn new funding in 2025-28 in addition to the £6.6bn from existing manifesto commitments.
- 3.2. Lewisham Council's Corporate Plan 2022-26 identifies the climate emergency as one of four local challenges, and states that
 - We continue to strive towards being a net zero borough by 2030, and will continue to lobby the government and work with our partners to achieve this.
 - We will lead by example, by using 100% renewable energy, retrofitting public buildings where possible to make them more energy efficient, and supporting residents to make their homes warmer and more efficient.
 - Our parks and green spaces are a lifeline to the health and wellbeing of our residents, and provide important resilience against the climate emergency. We will continue to invest in them, and continue to plant more trees – adding to the 25,000 we've planted since 2018.
 - The progress of our Climate Emergency Action Plan will be reviewed annually by our Executive Management Team and through our scrutiny committee process, including reporting annually to the Mayor and Cabinet. We will publish a public update once a year setting out what has been done in that year and updating our set of actions going forward.
- 3.3. The Corporate Plan priority 'Greener and Cleaner' commits to continue to embed the response to climate change throughout the Council and identifies work on tree planting, parks and active travel as part of this work. The priority on 'Quality Housing' includes a commitment to improve the borough's housing stock, working with all housing providers to encourage retro-fitting as part of our drive to be carbon-neutral by 2030.

¹ <https://www.legislation.gov.uk/ukdsi/2019/9780111187654>

Is this report easy to understand?

Please give us feedback so we can improve.

Go to <https://lewisham.gov.uk/contact-us/send-us-feedback-on-our-reports>

4. Background

- 4.1. In February 2019 Lewisham Councillors approved a motion declaring a Climate Emergency and setting the ambition for Lewisham to be carbon neutral by 2030². Lewisham's Climate Emergency Action plan was developed over the course of 2019 through an internal working group, discussions with residents and community groups, and input from the Sustainable Development Select Committee and was approved by Mayor and Cabinet on the 11 March 2020³.
- 4.2. The Action Plan identified the following priorities:
 - The scale of threat from climate change requires us to be ambitious
 - Action on climate change is action on social justice
 - Responding to the climate emergency delivers across a range of Council priorities
 - The Council must demonstrate leadership through its own operations
 - Net Zero Lewisham cannot be delivered by the Council alone
- 4.3. An assessment of progress against each of the actions in Lewisham's Climate Emergency Action Plan is included as an annex to this report.

5. Referral from Sustainable Development Scrutiny Committee

- 5.1. The Sustainable Development Scrutiny Committee discussed an update on the Climate Emergency Action Plan at its meeting on 10 January 2023. Following the meeting the Committee made the following referral to Mayor and Cabinet:
- 5.2. *The Committee welcomes the update from officers and notes the good practice on which the plan has been developed. However, the Committee is unclear about the likelihood of achieving those actions which are identified in the plan as 'ongoing'.*
- 5.3. *The Committee recommends that the Council should seek to further risk assess, prioritise, and effectively categorise the actions in the plan. Members believe that there needs to be an enhanced focus on how and when the actions will be delivered, which may include an assessment of the work that needs to take place to achieve this.*
- 5.4. *The Committee believes that, where priority actions have already been agreed upon, then this should be clearly communicated to members and the relevant stakeholders. Furthermore, the Committee believes that consideration must be given to ensuring there is transparency around the tasks of risk assessing, prioritising, and categorising other 'ongoing' actions.*

Response to the referral

- 5.5. The update on the Action Plan presented to Mayor and Cabinet has been revised in response to Sustainable Development Scrutiny Committee's request. The update is intended to provide additional analysis of the actions identified as 'Ongoing' to support a more transparent discussion on risk, priority and the challenges involved in delivering the Action Plan. In each case the narrative against the action sets out the steps that have been achieved and any constraints that have been identified. In addition the latest version of the update provided to Mayor and Cabinet includes a Red / Amber / Green 'RAG' rating. This RAG rating is based on whether the action has been achieved or not combined with the original forecast of when the action would be complete.
- 5.6. When the Climate Emergency Action Plan was published in 2020 an estimate of the date when each action would be completed was included, and has been part of the

² <https://councilmeetings.lewisham.gov.uk/documents/s62942/Motion%20%20proposed%20Cllr%20Anwar%20seconded%20Cllr%20Krupski.pdf>

³ <https://councilmeetings.lewisham.gov.uk/documents/s72555/Climate%20Emergency%20Action%20Plan.pdf>

information routinely circulated as part of the updates. These dates were either:

- 2020/21
- Short term (defined as by March 2023)
- Medium term (defined as March 2026)
- Long term (defined as March 2031)

5.7. This has enabled a simple but effective approach to identifying individual actions as either Red, Amber or Green as follows:

- Green = 'Achieved'; or 'Ongoing'/Date: long term
- Amber = 'Ongoing'/Date: medium term
- Red = 'Not achieved'; or 'Ongoing'/Date: 2020/21; or 'Ongoing'/Date: short term

5.8. It should be noted that the risk ratings are an assessment against the original planned action as set out in March 2020. There has inevitably been significant change since then including the pandemic and economic instability. The narrative update for each action seeks to provide details of how risks have been mitigated and updated plans for each action. These is expanded on below in paragraphs 6.10-6.15.

5.9. In addition to the material provided to Mayor and Cabinet, officers are working on creating a public-facing more accessible version of this material to set out the achievements and priorities of the Climate Emergency Action Plan over the next 3 years. This information is expected to be published by the end of Q1 in 2023/24.

6. Update on delivery

6.1. The 143 actions in the March 2020 Action Plan are divided across the following themes:

- Leading by Example;
- Sustainable Housing;
- Decarbonised Transport;
- Greener Adaptive Lewisham;
- Inspiring, Learning and Lobbying.

6.2. An annotated list of the actions is attached as an annex to this report. Each action has a narrative update and is then assessed as either: 'Achieved', 'Not Achieved' or 'Ongoing'. As described above in the response to the Sustainable Development Select Committee (paragraphs 5.5-5.9 above), each action has also been given a RAG rating.

Is this report easy to understand?

Please give us feedback so we can improve.

Go to <https://lewisham.gov.uk/contact-us/send-us-feedback-on-our-reports>

6.3. The following table shows these assessments by Action Plan thematic:

	Achieved	Ongoing	Not Achieved
Leading by Example (45)	64%	31%	4%
Sustainable Housing (43)	67%	28%	5%
Decarbonised Transport (22)	50%	45%	5%
Greener Adaptive Lewisham (14)	64%	36%	0%
Inspiring Learning and Lobbying (19)	89%	11%	0%
All (143)	66%	30%	3%

Note: rounding errors may mean some rows do not add to 100%

	Green	Amber	Red
Leading by Example (45)	67%	7%	27%
Sustainable Housing (43)	70%	7%	23%
Decarbonised Transport (22)	73%	5%	23%
Greener Adaptive Lewisham (14)	64%	0%	36%
Inspiring Learning and Lobbying (19)	89%	0%	11%
All (143)	71%	5%	24%

Note: rounding errors may mean some rows do not add to 100%

Achievements since 2020

6.4. Key achievements since Lewisham's Climate Emergency Action Plan was published in March 2020 include:

6.5. *Leading by Example: achievements*

- In 2022 Climate Emergency UK published a scored assessment of all UK Climate Emergency Plans. Lewisham's was scored 77%, 4th highest in London and 12th nationally (see action 1.1.1).
- In 2021 Lewisham Council was awarded £3.5m to deliver works to 10 corporate and school buildings under the Government's Public Sector Decarbonisation Scheme. The works, completed in 2022, cut carbon emissions by 316 tonnes a year through replacing gas boilers with heat pumps and retrofitting insulation, lighting upgrades and wider improvements to heating and ventilation (1.2.1).
- In 2021 the Pension Investment Committee approved a low carbon mandate to divest the Council's pension scheme from carbon and moved assets into holdings supporting positive investment in carbon reduction (1.5.1).
- A range of Council services have adopted improvements that are reducing emissions associated with delivery. This includes upgrades to the Council's fleet (1.3.2), electrification of tools used in parks and green spaces (1.3.9), adopting 'warm mix' for road surfacing works (1.3.10) and the roll out of food waste collections to schools (1.4.7).
- In 2020 the Council switched its corporate electricity contracts to 100% renewable (1.5.5)

6.6. *Sustainable Housing: achievements 2020-23*

- In 2022 Lewisham's Housing Retrofit Task & Finish Scrutiny Group published a

Is this report easy to understand?

Please give us feedback so we can improve.

Go to <https://lewisham.gov.uk/contact-us/send-us-feedback-on-our-reports>

range of recommendations aimed at supporting retrofit and reducing carbon emissions across housing in the borough of all tenures (2.3.1)

- In 2021 Lewisham Homes approved an Asset Management Strategy and Sustainability Strategy setting out plans to improve Lewisham Homes' housing stock to 2030 in line with the Lewisham Climate Emergency Strategic Action Plan (2.1.1). This approach informed the development of an application by the Council in November 2022 for £2.9m funding from the Social Housing Decarbonisation Fund as part of £9m decarbonisation works to the Lewisham Homes' estate (2.1.5).
- Lewisham Council leads the South London Healthy Homes partnership delivering a practical energy advice service across 12 South London boroughs targeted at low income and vulnerable households helping them stay warm in Winter. In three years the programme has supported 8,699 households including 1,602 in Lewisham (2.4.1).
- Lewisham has delivered borough-wide energy master-planning and detailed techno-economic studies into the viability of decentralised energy in clusters based in Catford, Lewisham Town Centre and Deptford which will support zero carbon growth through the planning system (2.6.2).
- The Council has sought to improve standards in the borough's least efficient homes. With Government funding officers led a sub-regional approach to engagement with private sector landlords to raise awareness of Minimum Energy Efficiency Standards, which in Lewisham involved 2,840 stakeholders (2.3.6). In 2022 the Council launched a new borough-wide additional licensing scheme meaning that all HMOs in the borough are now licensable (2.3.1).

6.7. *Decarbonised Transport: achievements 2020-23*

- Lewisham has one of the highest number of School Streets in London with 48 covering 39 schools. School Streets have roads closed to traffic at drop off and pick up times, reducing congestion and improving air quality and road safety around the school site. (3.2.3).
- Permanent traffic orders have been approved for Lewisham's Low Traffic Neighbourhood in Lee Green, the largest LTN in London. Further monitoring and implementation of wider complementary measures continue to support the scheme (3.2.2).
- In December 2022 Mayor and Cabinet approved a Sustainable Transport and Parking Improvements Programme which will take an area-based approach to controlling parking alongside improvements to promote walking and cycling including footway widening, trees and planting, bike hangers as well as electric vehicle charging and car clubs. (3.2.2).
- There are currently 153 electric vehicle charging points across Lewisham. The Council is accelerating delivery of charging points and will continue to seek additional funding in support of the ambition that all residents live within a 500m walk of a charging point (3.4.1).
- The Council is installing anti-idling signage near local schools, with 75 schools scheduled to be covered by the end of 2022 and new campaigns to raise awareness and compliance (3.4.7).

6.8. *Greener Adaptive Lewisham: achievements 2020-23*

- The Council has planted 25,000 trees since 2018. In 21/22 there were 964 trees planted in parks and 294 street trees in partnership with Street Trees for Living (4.1.1) over 500 trees are going in over the 22/23 planting season.

Is this report easy to understand?

Please give us feedback so we can improve.

Go to <https://lewisham.gov.uk/contact-us/send-us-feedback-on-our-reports>

- Thanks to the additional care and ownership of trees by local communities developed as a result of the partnership with Street Trees for Living, Lewisham's street trees have an excellent survival rate of 98%, significantly higher than the industry standard of 70% (4.1.1).
- The Council has secured funding for new flooding measures at Beckenham Place Park: £1.2m from the Environment Agency will create new flood storage capacity protecting communities the length of the Ravensbourne River and reducing risk to over 800 properties as part of the wider enhancements to the eastern side of the park (4.1.2).
- The Council has consulted on and published a range of key strategic documents including a new Parks and Open Spaces Strategy (4.1.7), Waste Strategy (4.3.2), Flood Risk Management Strategy (4.1.4) and Air Quality Action Plan (3.4.7) supporting a long-term and joined up approach to improving the borough's environment.

6.9. *Inspiring, Learning and Lobbying: achievements 2020-23*

- Lewisham's London Borough of Culture Year 2022 has had a strong focus on diversity and climate (5.1.2). Lewisham Speaks was the result of a 6-month artists' residency within the Climate Resilience Team and a borough-wide programme of engagement resulting in a show in summer 2022 performed in every ward and Lewisham's People's Day. Over 5,000 residents engaged with Lewisham Speaks in one way or another and the commission has left as a legacy a giant map created by residents, a manifesto and a video that will be part of Lewisham's induction programme for new staff and members (5.1.4).
- In November 2022 Mayor and Cabinet approved proposals to proceed with the development of a £1m Lewisham Green Bond. The Bond is expected to launch in 2023 and will be an opportunity for residents and communities to directly invest in net zero initiatives whilst earning a return on their investment (1.5.3).
- A Schools' Climate Conference was held during COP26 in 2021 with 26 schools attending. This led to an ongoing Schools' Climate Network meeting termly with an average of 15 schools attending. A Pupils' Climate Network has also now been launched meeting twice in person in 2022 to share good practice and enthusiasm for climate action across the borough's schools (1.4.3).
- A practical guide to retrofit was published in December 2022. <https://lewisham.gov.uk/myserVICES/environment/climate-emergency/improving-the-energy-efficiency-of-your-home> A 'Residents' guide to action on the climate crisis' was published in 2021 and updated in 2022. <https://lewisham.gov.uk/myserVICES/environment/resident-guide> (5.1.3).
- Lewisham has played a leading role in lobbying government for change and influencing delivery at a regional and national level. Through UK100, London Councils' Transport & Environment Committee, the London Environment Directors Network and a range of other forums the Council has called for greater clarity on the role of local authorities in delivering net zero and a need for realism and long-term thinking about how current funding works. (5.5.2)

Risks and constraints

- 6.10. As described above strong progress has been achieved across the Action Plan themes but inevitably some actions have been more challenging. This is reflected in the narrative and RAG assessment. Common constraints affecting delivery include funding, capacity across Council teams, a lack of clarity in relation to national policy, reliance on third party actions and actions where an alternative approach has been pursued. These issues, along with relevant actions identified as 'Red' are summarised

Is this report easy to understand?

Please give us feedback so we can improve.

Go to <https://lewisham.gov.uk/contact-us/send-us-feedback-on-our-reports>

below.

- 6.11. A lack of funding for delivery: Lewisham's Action Plan sets an ambitious agenda and intentionally included stretching actions in line with the recognition of the scale of threat the climate emergency represents. However declaring a climate emergency and setting an ambition to be net zero carbon confers no additional funding or powers to the Council. Actions that have been constrained by the level of funding available include:
- Delivery of a plan for a 50% reduction in carbon emissions from corporate buildings by 2025 (1.2.2) which requires a significant level of funding to achieve. While the Council has been successful in accessing funding through the Public Sector Decarbonisation Fund an estate-wide programme at this scale is beyond current resources. This is also true in relation to (1.4.4) the development of new carbon standards for school retrofit. Our approach has been therefore to focus attention on buildings with end-of-life heating systems to try to avoid like-for-like replacements of gas heating systems.
 - Upgrading the basement at Laurence House (1.3.1): some improvements have been made to the basement but the level of significant investment needed is on hold awaiting a wider review of the Catford Complex and the development of a new staff travel plan.
 - Funding for transport programmes was severely affected by the impact of the pandemic on Transport for London budgets, which has impacted on a number of the actions in *Decarbonised Transport* section of the plan including: completing Deptford Liveable Neighbourhoods (3.2.1); improvements to Lewisham High Road (3.2.4); extending cycle training (3.2.9). Progress has been made and officers continue to work with TfL to secure the funding to complete schemes.
- 6.12. Constraints on Council capacity: The Action Plan was published just before the first COVID 19 lockdown and at a time of long-term financial pressures on local authorities and their public and community sector partners. This has affected capacity in relation to delivery against the original timescales of the Action Plan and has been a factor in relation to the following actions:
- Corporate carbon reporting (1.1.2) the original forecast deadline for this work was 2020/21 but this was disrupted by the pandemic. Data for the 4 years 2018/19 to 2021/22 has been compiled but a number of gaps in data and significant changes over time need to be assessed and the report setting out the detail is expected to be published in Q1 23/24.
 - Capacity within the corporate energy team has meant it has not been possible to review the ISO 50001:2018 Energy Management System standard and this action is currently on hold (1.2.6).
 - Electric vehicle charging infrastructure at Wearside (1.3.4) has not been installed and requires defining and capital investment. This will be addressed as part of the wider acceleration of EV charging for the borough (3.4.1).
 - This planned baseline of staff travel (1.3.6) was delayed as a result of the radically changed working practices arising from the pandemic. The baseline study is programmed in for 22/23.
 - The Council has not agreed a document retention policy yet (1.3.12) due to the complexity and resources needed to do the development, consultation and implementation work. This work will be addressed as part of the Council's new Digital Strategy scheduled for 2023 as will the action relating to understanding the carbon associated with corporate IT functions (1.3.13).
 - The creation of new PRS renters union (2.3.9) has not been possible due to resource constraints but officers continue to explore this.

Is this report easy to understand?

Please give us feedback so we can improve.

Go to <https://lewisham.gov.uk/contact-us/send-us-feedback-on-our-reports>

- Capacity constraints have meant the proposed equalities assessment of climate emergency work has not yet taken place (2.4.3).
 - The adoption of the new Local Plan has not been possible within the March 2023 timeframe originally proposed in the Action Plan and the start of the final part of testing the soundness and legal compliance before submitting to Government for approval was delayed by the death of the Queen. Significant progress has however been made with climate emergency embedded within the Plan (2.5.1) and strengthened policies on green infrastructure and biodiversity (4.1.9).
 - The Council completed a community energy fund programme in 2020. Plans for a further round of funding (5.2.2) have been constrained by available resources to date with the intention to relaunch in 23/24.
 - Plans for alternative permitting for only electric ice cream vans (4.2.3) have been delayed because of uncertainty about the future of the grounds maintenance contract and issues on return on investment.
 - Investigations to seek suitable premises for a re-use shop (4.3.1) are ongoing but it hasn't been possible to complete this objective in the timeframe originally proposed.
- 6.13. Lack of clarity on national policy: in some cases constraints on funding and capacity have been exacerbated by a lack of clarity about national policy, including:
- The Independent Review of UK Net Zero published in January 2023 contains a range of recommendations to Government including focusing the role of local authorities building on commitments previously made by the Government in the Net Zero Strategy published in 2021.
 - In relation to Energy Performance Certificates and the commercial portfolio (1.2.10, 1.2.11 and 1.2.12) the Government consulted on raising minimum standards on EPCs C for domestic properties to and B for non-domestic by 2030 in 2021 but has yet to publish any conclusions from those in 2020.
 - This same issue is also relevant to the proposed action to assess the actions needed to achieve EPC B cross tenure (2.3.1) following the Housing Retrofit Task and Finish group recommendations in 2020 officers plan to develop and publish a Housing Retrofit Strategy in 23/24.
- 6.14. Reliance on third party actions: delivery of the ambition for the borough to be net zero by 2030 cannot be achieved by the Council alone and the new Local Strategic Partnership and its climate sub-group is expected to galvanise further partnership work in support of the climate agenda. In some cases proposed actions have been constrained because they rely on actions by third parties that have not yet taken place including:
- A memorandum of understanding was signed with Veolia in relation to the development of heat networks with the South East London Combined Heat and Power facility as a focus. Veolia were awarded funding under the Government's Heat Network Improvement Programme for a connection to Convoys Wharf but delivery of the commercial agreements between Veolia and the developer have been slower to conclude than anticipated (2.6.1).
 - Seeking the agreement of Transport for London to align their targets with Lewisham's ambition to be net zero by 2030 (3.1.1) remains a lobbying point but is outside the control of the Council.
 - Officers continue to work with TFL to increase the number of low emission buses (3.4.2) but delivery is reliant on TFL and their funding.

Is this report easy to understand?

Please give us feedback so we can improve.

Go to <https://lewisham.gov.uk/contact-us/send-us-feedback-on-our-reports>

6.15. Actions where an alternative approach is being pursued: in a small number of cases following the publication of the Action Plan circumstances have changed or subsequent analysis has identified that the proposed course of action was not feasible. This includes:

- Wider changes in relation to the relationship between Lewisham Homes and Lewisham Council means that some of the proposals made by Lewisham Homes in 2019/20 will be integrated into the work set out in the Leading by Example section for Lewisham Council buildings, operations and staff. This includes: new Lewisham Homes' staff sustainability protocols (2.2.2); refurbishment of the Old Town Hall (2.2.3) and Lewisham Homes' fleet standards (2.2.4).
- Lewisham Homes proposal to recruit 100 Eco Champions (2.2.5) was disrupted by COVID and subsequently it was decided that this should be integrated into existing resident engagement activity by explicitly including climate change as part of the work of existing resident steering groups.
- The proposal for a discount on any licence fee for landlords who can demonstrate achieving an EPC of C and above (2.3.4) was reviewed with the conclusion that while the offer was unlikely to motivate any additional action by landlords it would complicate the process and reduce funding, creating additional pressures for housing budgets.
- The proposal to refuse crossovers where paved driveways are not permeable (4.1.4) is still being considered, but as a more practical step guidance will be published to encourage homeowners to de-pave gardens and the ongoing In Living Memory work on flooding is continuing to raise awareness of the issues around drainage and flood risk.
- To avoid confusion or duplication the concept of Clean Air Neighbourhoods (4.2.1) is not the description the Council is currently using for local area-based projects with communities to improve air quality. There are however a number of active programmes that are achieving the aims of this action including school streets and this will also be supported through the planned area-based Sustainable Transport and Parking Improvements Programme.
- The creation of Lewisham Climate Commitment (5.3.1) was planned as part of the launch of the Climate Emergency Action Plan in 2020, but the official launch event was cancelled due to COVID. In 2021 a new Climate Subgroup of the Lewisham Deal was established with local partner organisations which has now been integrated and expanded as part of the new structures established for the Local Strategic Partnership.

7. Financial implications

- 7.1. Achieving the ambition for Lewisham to be net zero carbon has significant cost implications. Work undertaken to support the development of Lewisham's Climate Emergency Action Plan estimated a minimum cost of £1.6bn over 10 years.
- 7.2. Lewisham Council's funding from government has been hugely reduced since 2013/14, while at the same time, the Council has faced increased costs through population growth, changes to government policy, the COVID19 pandemic and costs associated with inflation and rising energy bills. Considering the minimum cost required to achieve the action plan, there is a need to find creative ways to find the resources needed to support this work.
- 7.3. Responding to the Climate Emergency is about making better use of resources and creating an alternative to a high-carbon consumer economy. In this context there are potential connections between delivering on a low carbon agenda and the Council's

Is this report easy to understand?

Please give us feedback so we can improve.

Go to <https://lewisham.gov.uk/contact-us/send-us-feedback-on-our-reports>

need to cut expenditure and secure greater financial stability.

8. Legal implications

- 8.1. The report refers to the Climate Change Act 2008 and regulations under that Act. The Act establishes a legal framework that underpins the UK's commitment to tackling climate change, including reducing CO2 emissions and addressing climate risks. The provisions of the Act apply at central government level.
- 8.2. Local authorities can use their own powers to take actions. The relevant powers are likely to include the wide general power of competence under Section 1 of the Localism Act 2011 which allows local authorities to do anything that individuals generally may do. The existence of the general power is not limited by the existence of any other power of the Council which (to any extent) overlaps the general power.
- 8.3. The matters considered in this report are not key decisions. The implementation of various matters referred to in this report may be key decisions and if so will be addressed through the appropriate mechanisms when those decisions arise.

9. Equalities implications

- 9.1. There are no specific equalities implications arising directly from this report but it should be noted that the risks and impacts of a changing climate will not fall equally, and without action the consequences will exacerbate poverty and health inequalities globally and locally.
- 9.2. In addition, given the fundamental nature of the changes needed, there are considerable risks that the actions taken to limit carbon emissions could, in themselves, disadvantage low income and vulnerable individuals and communities. Further work is needed to fully identify the equalities implications of climate change for Lewisham residents.

10. Climate change and environmental implications

- 10.1. The environmental implications of the climate crisis are summarised in the Action Plan. Since the plan was published there has been good progress made to embed action on the climate within the Council's strategies and operational functions, and to bring together the Council's work across wider environmental activity particularly in relation to the Council's Waste Strategy, the Parks and Open Spaces Strategy, the Air Quality Management Plan, the draft Local Plan, the Flood Risk Management Strategy and the current Sustainable Streets programme.

11. Crime and disorder implications

- 11.1. There are no direct crime and disorder implications arising from this report.

12. Health and wellbeing implications

- 12.1. Lewisham's Climate Emergency Action Plan will deliver a range of health and wellbeing benefits to residents, including actions to improve air quality, increased participation in active travel as well as support for low income and vulnerable households to cut the cost of staying warm in winter.

13. Background papers

- 13.1. Lewisham's Climate Emergency Action Plan (March 2020)

<https://councilmeetings.lewisham.gov.uk/documents/s72555/Climate%20Emergency%20Action%20Plan.pdf>

Is this report easy to understand?

Please give us feedback so we can improve.

Go to <https://lewisham.gov.uk/contact-us/send-us-feedback-on-our-reports>

14. Report author and contact

Martin O'Brien: Climate Resilience Manager; martin.o'brien@lewisham.gov.uk; 07736 900 214

Legal implications: Melanie Dawson, Principal Lawyer Place

Financial implications: Shola Ojo, Group Finance HRPR

Is this report easy to understand?

Please give us feedback so we can improve.

Go to <https://lewisham.gov.uk/contact-us/send-us-feedback-on-our-reports>

15. Glossary

Term	Definition
Carbon / Carbon dioxide	Carbon dioxide (CO ₂) is a naturally occurring gas fixed by photosynthesis into organic matter and is a by-product of fossil fuel combustion, land use changes and other industrial processes. CO ₂ is the principal greenhouse gas (see below) associated with human activity and climate change (see below) and the reference against which other greenhouse gases are measured. Unless otherwise indicated the terms 'carbon' or 'carbon dioxide' are used in this report to refer to a combined measure of greenhouse gases (CO ₂ e or CO ₂ equivalent), of which carbon dioxide is the most common.
Carbon Neutral	The term "carbon neutral" is used in this report in line with the original declaration of a Climate Emergency in Lewisham. Carbon neutrality balances greenhouse gas emissions with carbon removals. As defined by the Committee on Climate Change, a net-zero or carbon neutral target requires "deep reductions in emissions, with any remaining sources offset by removals of CO ₂ from the atmosphere". In the context of Lewisham's target this means additional carbon removal and storage activity at the borough level or 'carbon offsets' funding an equivalent removal outside the borough.
Carbon Offsetting	Carbon offsetting enables individuals and organisations to compensate for any emissions they cannot avoid by paying for a carbon credit, typically a payment for an equivalent amount of emissions to be reduced or removed elsewhere. These emissions savings are generated through the implementation of a variety of projects such as planting trees and installing solar panels. Offsetting should be seen as an option of last resort and there is no commitment by Lewisham Council to fund carbon offsets to meet the aspiration to be carbon neutral by 2030.
Climate	Climate is usually defined as the average weather, or more rigorously, as a statistical description in terms of the mean and variability of relevant quantities over a period of time ranging from months to thousands or millions of years. The relevant quantities are most often surface variables such as temperature, precipitation, and wind.
Climate Change	Climate change, as used by the United Nations International Panel on Climate Change, refers to a change in the state of the climate that can be identified by changes in the mean and/or the variability of its properties, and that persists for an extended period, typically decades or longer.
Fuel Poverty	The Government's definition of fuel poverty for England and Wales states that a household is said to be in fuel poverty if: they have required fuel costs that are above average (the national median level), and, were they to spend that amount they would be left with a residual income below the official poverty line. There is a direct link between living in cold and damp conditions and poor health outcomes.
Greenhouse Gases	Greenhouse gases are those gaseous constituents of the atmosphere which absorb and emit radiation at specific wavelengths within the spectrum of thermal infrared radiation emitted by the Earth's surface, by the atmosphere itself, and by clouds. This raises global temperatures with a consequential impact on climate. Water vapour (H ₂ O), carbon dioxide (CO ₂), nitrous oxide (N ₂ O), methane (CH ₄), and ozone (O ₃) are the primary greenhouse gases in the Earth's atmosphere.
Scope 1, 2 & 3 emissions	Scope 1, 2 and 3 emissions are a method of defining, measuring and reporting carbon emissions on an organisational or an area basis. Scope 1 covers direct emissions from owned or controlled sources. Scope 2 covers indirect emissions from the generation of purchased electricity, steam, heating and cooling. Scope 3 includes all other indirect emissions including in particular the supply chain.

Is this report easy to understand?

Please give us feedback so we can improve.

Go to <https://lewisham.gov.uk/contact-us/send-us-feedback-on-our-reports>

This page is intentionally left blank

Ref	Action	Action owner	Update February 2022	Status	Date	RAG rating
LEADING BY EXAMPLE						
1.1.1	The Council's Executive Management Team to oversee delivery of the Climate Emergency Action Plan with an annual update report to Mayor and Cabinet.	Housing Regeneration and Public Realm - Climate Resilience Team	The Action Plan and the Climate Emergency have been discussed by the Executive Management Team on a number of occasions since 2020. In 2022 a new officer-level Net Zero Carbon Board, chaired by the Executive Director for Housing, Regeneration and Public Realm has been established to provide strategic oversight of delivery of Lewisham's Climate Emergency Action Plan. In January 2022 Climate Emergency UK published a scored assessment of all UK Climate Emergency Plans. Lewisham was given an overall score of 77%, 4th highest in London and 12th nationally out of 184 UK single tier local authorities.	Achieved	2020/21	Green
1.1.2	Publish an annual 'Corporate Use of Resources' statement setting out performance in relation to corporate carbon emissions, energy consumption, water, waste & recycling, paper use, staff travel, procurement, IT (information technology) and other environmental indicators.	Housing Regeneration and Public Realm - Climate Resilience Team	This work did not get delivered in 2020/21 because of the impact of the pandemic on resources. Reports analysing corporate carbon emissions for the years 2018/19 to 2021/22 are near to completion and will be published on the Council's website following approval by Lewisham's Net Zero Carbon Board. The methodology uses the Local Partnerships reporting tool setting out the Council's scope 1 and 2 carbon emissions, the methodology endorsed by London Councils' Emissions Reporting Group. A further update for 2022/23 will be published by the end of September 2023.	Ongoing	2020/21	Red
1.1.3	New programme of climate/carbon literacy training to be rolled out to staff and additional focus on Climate Emergency and carbon literacy in induction for new staff. Use the Staff Climate Forum to identify further opportunities for engagement.	Housing Regeneration and Public Realm - Climate Resilience Team	A new Climate Literacy module has been developed and will be included on the Council's Learning Hub for all staff. The first staff members are expected to go through the new training in Q1 2023/24. In an all staff survey in 2022 65% of staff said they considered the impact their role has on the environment; 54% agree the council is working to tackle the climate emergency; and 52% of staff want to hear more about the Council's work on climate change. These figures create a benchmark for tracking progress on embedding climate issues across the Council.	Achieved	Short term	Green
1.1.4	New policy of only vegan food served at events on corporate sites.	Housing Regeneration and Public Realm - Climate Resilience Team	This policy was established as part of Mayor and Cabinet's approval of the Climate Emergency Action Plan in March 2020 and has been featured as a case study on the LGA's Climate Emergency case studies https://www.local.gov.uk/case-studies/lewisham-council-vegan-catering-local-approach-global-emissions	Achieved	2020/21	Green
1.1.5	Review further opportunities to eliminate single-use plastic from across the Council's operations in line with the Council corporate commitment, including ending single-use plastics at events.	Housing Regeneration and Public Realm - Climate Resilience Team	Avoiding single-use plastic across the Council's buildings and service delivery remains a priority. Single use plastic was avoided throughout Lewisham's Borough of Culture events including People's Day.	Achieved	2020/21	Green
1.1.6	Develop a strategic approach to reducing deliveries and servicing vehicles to and from Council buildings, including restricting delivery times to certain hours, learning from good practice elsewhere such as the model being used by Guys and St Thomas hospital at the Dartford Consolidation Centre.	Corporate Resources - Financial Planning Strategy and Commercial	The pandemic changed the nature of office working for the Council, including deliveries to buildings. Reducing the need for vehicle transport and particularly fossil fuel powered vehicles will continue to be a priority. The Council's Sustainable Procurement Strategy (2021-25) including Social Value policy and KPIs provide guidance to service teams on this.	Ongoing	Medium term	Amber
1.1.7	Review and reshape the current internal Climate Emergency Working Group to fit with delivery of the Action Plan.	Housing Regeneration and Public Realm - Inclusive Regeneration	In October 2022 a new Net Zero Carbon Board, chaired by the Executive Director for Housing, Regeneration and Public Realm was established and will provide strategic oversight of delivery of Lewisham's Climate Emergency Action Plan.	Achieved	2020/21	Green
1.2.1	Our aim is to be carbon neutral in terms of our corporate emissions by 2030, with an interim target of reducing carbon emissions from our corporate buildings by 50% by 2025 against the 2017/18 baseline.	Housing Regeneration and Public Realm - Capital Delivery	A 50% reduction in emissions from buildings by 2025 and 100% by 2030 is not achievable without substantial investment across the Council's buildings. The Council has however been successful in securing additional funding to deliver retrofit works to Council buildings and schools to ensure in the short term that heating works do not result in like-for-like gas boiler replacements. In 2021 Lewisham Council was awarded £2.7m to deliver works to 7 corporate sites and £0.8m for 3 schools under the Government's Public Sector Decarbonisation Scheme. The funding replaced gas boilers with air source heat pumps including a ground source heat pump at Brockley Rise Adult Learning Centre as well as installing insulation, lighting upgrades and wider improvements to heating and ventilation. The works at the 7 corporate sites has reduced carbon emissions by 208 tonnes a year and at the 3 schools by 108 tonnes annually. Further work is underway to deliver Heat Decarbonisation Plans across 32 corporate sites and 5 schools by March 2023 funded through the Government's Low Carbon Skills Fund. A further application to the Public Sector Decarbonisation Scheme was submitted in October 2022.	Ongoing	Medium term	Amber
1.2.2	Set out a detailed programme, including milestones, for carbon management in the Council's Strategic Asset Management Plan to 2025.	Housing Regeneration and Public Realm - Capital Delivery	The Council's Strategic Asset Management Plan is scheduled to be finalised in 2023/24.	Ongoing	Short term	Red
1.2.3	Embed the aspiration to be carbon neutral into the Catford Regeneration Masterplan with an aim for the Council's main corporate centre to achieve a DEC A rating.	Housing Regeneration and Public Realm - Inclusive Regeneration	In 2022 the Council completed a set of techno economic assessment of heat network opportunity areas including Catford. This work is now a key input into the Council's delivery strategy for the regeneration of Catford that is underway. The Council's Strategic Asset Management Plan will set out the approach to design and delivery of the Council's future accommodation needs and civic presence.	Achieved	Short term	Green
1.2.4	Complete an estate lifecycle programme for 80 Council-owned sites to inform the Strategic Asset Management Plan. Outputs will identify works in relation to heating, insulation, lighting, windows and other energy related measures.	Housing Regeneration and Public Realm - Capital Delivery	The lifecycle programme completed in 2020. This work informs an ongoing estate maintenance programme for corporate sites with packages of work being tendered across multiple buildings at multiple sites. This is an ongoing programme of works which seeks to deal with backlog of maintenance issues and pro-actively ensure buildings remain fit for purpose. Some of these works directly contribute towards carbon reduction in the corporate estate – e.g. new windows, LED lighting, new roofs with insulation etc – however the programme does not include large scale heating replacement for carbon neutral technologies. External funding is required to support this (see 1.2.1).	Achieved	Short term	Green
1.2.5	Deliver lighting upgrades and improvements to heating, ventilation and air conditioning in the Old Town Hall, Civic Suite, Catford Library and customer service centre in 20/21.	Housing Regeneration and Public Realm - Capital Delivery	Refurbishment works to the Old Town Hall have concluded. These included repairing windows, installing LED lighting and some limited heating and cooling upgrades. Work to the ground floor of Laurence House continues to be on hold however M&E surveys have been completed to understand the requirements. Catford Library moved to the Catford shopping centre and refit works there included LED lighting, new electrics and heating/cooling.	Achieved	2020/21	Green
1.2.6	Review the applicability of ISO 50001:2018 Energy Management System standard as a means to drive improvements in energy efficiency.	Corporate Resources - Facilities Management	Capacity within the corporate energy team has meant this work has not been possible.	Not achieved	Short term	Red
1.2.7	Build capacity in our capital delivery team in relation to energy and carbon reduction.	Housing Regeneration and Public Realm - Capital Delivery	The Capital Delivery Team have been directly involved in the delivery of Lewisham's Low Carbon Skills Fund and Public Sector Delivery Scheme funded works across corporate buildings and schools giving first hand experience of energy efficiency and carbon reduction measures.	Achieved	Short term	Green
1.2.8	Explore new funding mechanisms to use the savings from reduced energy consumption to fund the upfront capital costs of works.	Housing Regeneration and Public Realm - Inclusive Regeneration	Rising energy costs have made any spend-to-save schemes impractical in terms of releasing budget. However new proposals for innovative funding mechanisms (see 1.5.3 and 1.5.4 below) may offer potential opportunities to support capital works.	Achieved	Short term	Green
1.2.9	Review water consumption across the corporate estate. Identify and publish targets to improve performance as part of the annual use of resources statement described in 1.1.2.	Housing Regeneration and Public Realm - Inclusive Regeneration	Water consumption has been included as part of the Corporate Use of Resources data compiled for 2020/21 and will continue to be part of this work (see 1.1.2).	Achieved	2020/21	Green
1.2.10	Complete remaining EPC surveys for the 270 sites in the commercial portfolio and assessment against the requirements of the Minimum Energy Efficiency Standards.	Housing Regeneration and Public Realm - Inclusive Regeneration	The commercial estates team are in the process of instructing EPC advisers to undertake further inspections of properties where existing EPCs are due to expire, or we do not have a current record of an EPC certificate	Ongoing	Short term	Red
1.2.11	Ensure compliance by 2023 with the Minimum Energy Efficiency Standards (MEES) legislation in relation to those commercial properties identified as falling below EPC E (currently 25 out of 170 EPCs).	Housing Regeneration and Public Realm - Capital Delivery	15 properties within the portfolio have an existing rating of F or G. These have been referred to the EPC advisers acting for the commercial estates team for advice and recommendations. The Government is yet to publish the outcome of a 2021 consultation on MEES regulations.	Not achieved	Short term	Red
1.2.12	Identify the actions needed to bring the commercial estate up to EPC Band C by 2025 including opportunities as commercial property leases come up for renewal to implement 'green leases' that incorporates incentives into the lease to operate and manage premises in a sustainable way.	Housing Regeneration and Public Realm - Capital Delivery	Further discussions with Legal will be arranged to discuss the Council's approach and adoption and suitability of green leases. These are likely to vary for different locations and properties.	Ongoing	Short term	Red

1.3.1	Upgrade the basement at Laurence House to remove all car spaces except essential users and improve facilities for cyclists.	Housing Regeneration and Public Realm - Capital Delivery	This work is currently on hold while funding is found to support the cost of the works but will be considered as part of a wider review of the Catford Complex and the development of a new staff travel plan in 2023.	Ongoing	Short term	Red
1.3.2	Renew the corporate bus fleet with 40 new vehicles all with the latest Euro 6 engines.	Housing Regeneration and Public Realm - Street and Environmental Services	Investment in Lewisham's fleet in 2020 means that all the Council's bus fleet are Euro 6 and compliant with the ULEZ.	Achieved	2020/21	Green
1.3.3	Upgrade the HGV fleet to Euro 6 standards including all 25 street cleansing and refuse vehicles.	Housing Regeneration and Public Realm - Street and Environmental Services	The new HGV fleet came into operation at the end of November 2022. All Lewisham's HGV vehicles are now Euro 6 and compliant with the ULEZ	Achieved	2020/21	Green
1.3.4	Install 4 new electric vehicle charging points at the Council's Wearside depot.	Housing Regeneration and Public Realm - Street and Environmental Services	This has not been achieved and requires defining and capital investment. EV charging points at Wearside will be considered as part of the wider acceleration of EV charging for the borough (see 3.4.1).	Ongoing	Short term	Red
1.3.5	Review opportunities for trial of a fully electric 1.5 tonne van and a fully electric refuse vehicle.	Housing Regeneration and Public Realm - Street and Environmental Services	A 1.5t fully electric light van has been added to the fleet, other electric vehicles will be added as budget, technical feasibility and availability in the market allow.	Achieved	2020/21	Green
1.3.6	Set a baseline for current staff travel by transport mode. Promote active travel and the use of public transport as the default option for all work journeys except where there is a legitimate reason. Extend use of team oyster cards and for journeys where vehicle is unavoidable use of electric pool cars. Seek to gain accredited status in relation to green staff travel.	Housing Regeneration and Public Realm - Strategic Transport	A travel survey is planned in 23/24 to establish a staff travel baseline, consultants have been commissioned to undertake this work which will commence in March. This has only become possible now that staff have started coming back into the office. Use of team oyster cards has not yet been extended as it is dependent on the results of the travel survey and the electric pool cars remain in use.	Ongoing	2020/21	Red
1.3.7	Embed our response to the climate crisis into corporate service planning.	Housing Regeneration and Public Realm - Climate Resilience Team	The Council's corporate environmental performance has been embedded (KR6) within the Future Working Programme's Objectives and Key Results and is included within the focus of the two workstreams reporting to the Future Working Programme Board: 'Our Workplace' and 'Our Organisation'.	Achieved	2020/21	Green
1.3.8	Work with the Council's PFI provider Skanska to review opportunities to convert Lewisham streetlights to LED.	Housing Regeneration and Public Realm - Highways	Lewisham continue to be in dialogue with the PFI service provider, Milestone, to review the capital costs, looking to reduce the payback period for the authority. A business case is in progress to test the viability of a change to LED over the time-scale of the PFI contract. In parallel the service provider has been reviewing lantern suppliers to minimise costs.	Ongoing	Medium term	Amber
1.3.9	Prioritise the procurement and use of electric tools rather than petrol in the parks service.	Community Services - Parks Sports and Leisure	Electric machinery purchased since the Climate Emergency Action Plan was agreed includes: 2020-21 electric machinery logged included: x1 buggy; x11 strimmers; x7 hedge cutters; x7 backpack blowers; x2 chainsaws; x2 pole saws; G33x2 long arm hedgecutters; x2 handheld blowers; x4 brushcutters; x1 zero turn mower; x1 stand on mower; x4 backpack blowers; x4 brushcutters.	Achieved	Short term	Green
1.3.10	Identify opportunities to reduce the carbon intensity of our resurfacing work including increased use of 'warm mix' and work with the regional officers group, The London Technical Advisers Group (LoTag), to identify and integrate best practice into highway management in Lewisham.	Housing Regeneration and Public Realm - Highways	As part of the tendering process for the new 8 year Highways partnership contract bidders had to demonstrate their ability to reduce the carbon intensity of service delivery and the use of materials as part of their company wide vision for net zero. In 2020 the Highways Team used warm mix asphalt on the carriageway more extensively reducing CO2 emissions by a forecast 15-30% as well as improving productivity as it takes less time to cool, reducing public disruption through earlier re-opening of the road and improved conditions for the workforce. Additionally on some footways we have reheated the existing asphalt to reform a new surface. In the long term the Council has plans to use, where possible, microsurfacing which is a protective seal which extends the life of the pavement and our intention is to firstly use this on some asphalt footways. The use of recycled materials on the highway is extensive particularly in fill materials to excavations and in the road structure.	Achieved	2020/21	Green
1.3.11	Review the Council's outdoor events and identify opportunities to remove avoidable carbon emissions, for example replacing diesel generators with zero carbon alternatives.	Community Services - Culture, Learning and Libraries	A Climate Emergency Borough of Culture group was convened as part of LBoC and guidelines for events were adopted. These were put into practice as part of the BOC Commissions through the year as well as the launch event and Lewisham People's Day 2022. Funding for the annual Firework event in Blackheath has been cut and a decision on the future of Lewisham People's Day will be made ahead of 2023.	Achieved	2020/21	Green
1.3.12	Develop and implement a new document retention policy that minimises hard copy printing and replaces physical storage with scanned copies and standardised approaches to retaining and destroying records to minimise storage requirements. Extend the use of online and electronic processes to replace paper, for example in relation to pay slips.	Corporate Resources - IT and Digital Services	The Council has not agreed a document retention policy yet due to the complexity and resource needed to develop, consult and implement. Payslips continue to be issued electronically. This will be considered as part of the Council's new Digital Strategy scheduled for 2023.	Ongoing	2020/21	Red
1.3.13	Carry out an energy and carbon audit of all Corporate IT functions.	Corporate Resources - IT and Digital Services	The Council intends to consult on a Digital Strategy in early 2023. The environmental performance and impact of IT equipment will be considered as part of the Council's future decision-making on the ownership of devices and hardware. In June Mayor and Cabinet approved a report on data storage infrastructure which when implemented has the potential to save 55 tonnes of carbon a year. The new system has been procured and installed. Migration from the existing environment onto the new system is expected to complete by the end of 22/23 when the old system can be decommissioned and the carbon savings achieved.	Ongoing	2020/21	Red
1.3.14	Review planting schemes outside corporate buildings to reduce the use of short term plants chosen for appearances and promote the use of plants with greater climate adaptation resilience and biodiversity benefits particularly for bees, moths, butterflies and other pollinators.	Community Services - Parks Sports and Leisure	The Council's new planting scheme has replaced annual, seasonal bedding at Laurence House and Civic Suite with more sustainable and drought resistant planting.	Achieved	2020/21	Green
1.4.1	Support schools in accessing SALIX funding and other sources of external resources to improve the energy efficiency of buildings and generate onsite renewable energy.	Housing Regeneration and Public Realm - Climate Resilience Team	Lewisham Council was awarded £120k in November 2020 to deliver detailed heat decarbonisation plans in four schools: Dalmain, Downderry, Myatt Garden and Torridon. The plans were then used to secure a further £794k in February 2021 for works in Downderry, Dalmain and Myatt Garden to replace gas boilers with air source heat pumps and a range of other energy efficiency improvements including cavity and roof insulation and ventilation works. A further grant of £220k was secured in July 2022 and this will deliver costed plans to decarbonise heat in schools with end of life heating systems. The Council's Strategic Asset Management Plan (see 1.2.1) will set out the broader approach to decarbonising the Council-owned schools' estate by 2030.	Achieved	Short term	Green
1.4.2	Work towards achieving new higher energy standards for schools with the aim for new schools to be DEC A and refurbished schools DEC B.	Housing Regeneration and Public Realm - Capital Delivery	Budget considerations will be a key factor in the feasibility of achieving this objective. But this will be explored on new education projects moving forwards, using the outputs from the Low Carbon Skills Fund assessments identified in 1.4.1.	Ongoing	Medium term	Green
1.4.3	Support efforts by school staff and pupils to take action on climate change. Put proposals for joined up activity and shared resources to the Schools Forum in 2020 including the scope for increasing climate literacy in school, for example by having a climate change trained teacher in every school. Help schools create their own carbon actions plans.	Housing Regeneration and Public Realm - Climate Resilience Team	A Schools' Climate Conference was held in November 2021 with 26 schools attending. A Schools Climate Network was launched as a result of this Conference which has met termly online, with an average of 15 schools attending. A Pupils Climate Network was also launched in June 2022 with 7 schools hosted by Edmund Waller Primary. Schools guidance has been created on how to declare a climate emergency and elearning promoted in summer 2022 for teachers to help teach climate change.	Achieved	2020/21	Green
1.4.4	Develop new carbon reduction targets for new school designs in the Project Implementation Document (PID) stage and Employer Requirements (ERs) of capital works.	Housing Regeneration and Public Realm - Capital Delivery	Contractors are currently required to achieve BREEAM Excellent on new build projects, and BREEAM Very Good on refurbishment projects. They are also required to meet all relevant targets within the London Plan. Budget constraints and grant funding conditions are the key constraints in achieving this action. Extending these requirements requires additional funding that goes beyond existing sources including the Government's Public Sector Decarbonisation Scheme.	Ongoing	Short term	Red
1.4.5	Undertake an audit of schools' energy performance designed to share good practice and learn lessons that can be integrated into corporate standards.	Housing Regeneration and Public Realm - Climate Resilience Team	Following the assessment of St Winifred's School in 2020 detailed decarbonisation plans for four other Lewisham Schools (Dalmain, Downderry, Myatt Garden and Torridon) were funded through the Government's Low Carbon Skills Fund in 2021. In 2022 The Department for Education has funded a detailed assessment of the approach taken to Whole Carbon Assessments in these 5 schools as a national exemplar.	Achieved	2020/21	Green

1.4.6	Assess further improvements to the catering service including: An additional meat free day per week; increasing the number of vegan options; Future options for procuring the school catering service including insourcing, seeking opportunities to promote local produce, reduce food miles and offer more seasonal menus.	Children and Young People Directorate - Education Services	The contract was let to Chartwells commencing on the 1st of August 2021 and servicing 25 schools. The improved specification includes an additional meat free day. Chartwells are part of the Compass group who have a roadmap to net zero and areas detailed within the life of the new contract include, the use of 100% reusable or recyclable packaging by 2023, 100% electric car policy by 2024 and a 25% switch from animal proteins by 2025. Chartwells identify that in 2020, 85% of ingredients were sourced from UK farmers and growers.	Achieved	2020/21	Green
1.4.7	Trial food waste collection for school classrooms in 2020 year to assess the potential to roll out for all school kitchens. Review and identify opportunities for further reductions in waste from schools.	Housing Regeneration and Public Realm - Street and Environmental Services	Trial successfully run with St Winifred's and Rathfern Primary schools. School composting workshops, school staff recycling sessions, school recycling workshops are all offered for free to schools by the Waste and Recycling team. The roll out of food waste collections to primary schools is underway.	Achieved	2020/21	Green
1.5.1	Agree and implement a new strategy for divesting the Pension Fund from high-carbon investments.	Corporate Resources - Financial Planning Strategy and Commercial	In September 2021 the Pension Investment Committee (PIC) chose the LCIV Passive Equity Progressive Paris Aligned (PEPPA) and Storebrand Global ESG Plus funds for its developed and emerging market equity holdings, being circa 50% of the entire Pension Fund assets. As of September 2022 the Pension Fund completed the last of the transfers into these mandates. In addition the Fund has invested in the LCIV Renewable Infrastructure Fund as part of the review of its property fund holdings.	Achieved	2020/21	Green
1.5.2	Review and update existing procurement and social value policies to strengthen the value placed on life-cycle assessment, support the circular economy and reduce carbon emissions across our supply chain. We will assess the introduction of requirements through contractor social value commitments to publicly report their corporate carbon emissions, and including CO2e emissions relating to the goods and services we procure as performance metrics in contracts. We will assess the scope to improve the standards in contractor fleet vehicles. We will assess scope for Council Information Technology contracts to adopt the highest standards of efficiency and environmental performance including whole lifecycle costs.	Corporate Resources - Financial Planning Strategy and Commercial	Procurement and social value policies have been updated to strengthen the value placed on life-cycle assessment, support the circular economy and reduce carbon emissions across our supply chain. Lewisham Council's Sustainable Procurement Strategy (2021-25) and Social Value policy (2022-26) reinforce commitments in support of carbon net zero by 2030. For example, requested FORS accreditation in our recently tendered Highways contract will improve the standards in contractor fleet vehicles. The Social Value policy is a key tool for suitable projects particularly in relation to building retrofit to upskill the local workforce and SMEs on green construction.	Achieved	2020/21	Green
1.5.3	Explore opportunities for a revolving fund that will deliver carbon reduction projects and recoup money through energy savings.	Corporate Resources - Financial Planning Strategy and Commercial	In November 2022 Mayor and Cabinet approved proposals to proceed with the development of a Lewisham Green Bond to raise circa £1m of finance via a Financial Conduct Authority (FCA) regulated crowd funding platform. This will be invested in low carbon schemes within the Council's capital programme. The report also seeks approval to sign the Green Finance Institute's Green Bond Pledge. The Lewisham Green Bond is expected to be launched in 2023 and will be an opportunity for Lewisham's residents and communities to directly invest to support the achievement of net zero within their communities whilst earning a return on their investment.	Achieved	Short term	Green
1.5.4	Explore partnerships with funders for new carbon reduction infrastructure projects that deliver local value and potential return on investment.	Corporate Resources - Financial Planning Strategy and Commercial	In November 2022 Mayor and Cabinet approved proposals to proceed with the development of a Lewisham Green Bond to raise circa £1m of finance via a Financial Conduct Authority (FCA) regulated crowd funding platform. This will be invested in low carbon schemes within the Council's capital programme. The report also seeks approval to sign the Green Finance Institute's Green Bond Pledge. The Lewisham Green Bond is expected to be launched in 2023 and will be an opportunity for Lewisham's residents and communities to directly invest to support the achievement of net zero within their communities whilst earning a return on their investment.	Ongoing	Long term	Green
1.5.5	Use the Council's corporate energy procurement to support renewable energy, develop an energy procurement strategy that aligns our Climate Emergency ambitions with the way we procure energy contracts.	Corporate Resources - Facilities Management	The Council has continued to purchase 100% renewable electricity backed through the industry REGO certification	Achieved	2020/21	Green
SUSTAINABLE HOUSING						
2.1.1	Deliver a new Asset Management Strategy that sets out a new ambition for energy and carbon performance across the Lewisham Homes' stock including: The requirements of achieving a minimum of SAP 86 EPC B across the Lewisham Homes stock; Ensuring new build developments comply with existing and emerging local and national policy and legislation including SAP10.1 methodology (and future upgrades of SAP); Includes a focus on improving property ventilation; Sets out an option appraisal on poorly performing properties.	Lewisham Homes	Lewisham Homes' Board approved an Asset Management Strategy and a Sustainability Strategy in September 2021. The Sustainability Strategy sets out plans to improve Lewisham Homes' housing stock over the period 2021-2030, and is in line with the Lewisham Climate Emergency Strategic Action Plan. The Council has written a new HRA Business Plan which the AMS will be linked to. However due to the delay in the rent setting by the government this year, the HRA Business Plan will not be presented to Mayor & Cabinet until January 2023	Achieved	2020/21	Green
2.1.2	Develop a new strategic approach to decarbonising heating across the stock with the aim of centralising plant and creating opportunities for heat networks. Assess the opportunities and risks of technologies such as heat pumps, and improvements to existing electric heating systems and storage heaters identify the optimum approach to boiler replacements.	Lewisham Homes	Lewisham Homes has worked closely with the Council to align investment plans for heating with the outputs from the Council's Energy Masterplanning work, which has identified opportunities to decarbonise heating across a central opportunity area from Catford, through Lewisham Town Centre and up to north Lewisham. The Council's energy masterplanning informs decision making in relation to new heat infrastructure supporting new builds, existing communal heating systems and electrically heated properties. The development of a detailed strategic plan for all stock would require a level of investment that is beyond current funding including through the Social Housing Decarbonisation Fund to address the required upgrades to building fabric, network capacity and cost of technologies such as heat pumps. Further work will be needed as part of the strategic response to the Housing Retrofit Task and Finish recommendations. Lewisham Homes currently has a small planned replacement programme of domestic gas boilers of approx. 200 units per year, with reactive replacements only as required.	Achieved	2020/21	Green
2.1.3	Raise standards in existing communal heating systems, ensuring compliance with regulation and installing metering and improved controls to systems. Develop a planned maintenance and investment plan that is informed by the emerging strategic approach to decarbonising heating across the stock.	Lewisham Homes	New communal heating systems have metering and billing and ongoing maintenance contacts in place. Discussions have begun on an exercise to look at all existing contracts being consolidated into a bundle of packaged works that we can put out to tender.	Achieved	Short term	Green
2.1.4	Review procurement policies to increase the sustainability of major works, including selecting lower carbon materials and reusing structures and construction materials where possible.	Lewisham Homes	The mobilisation of the two long-term framework partnerships provides excellent opportunities to begin to adopt a "sustainability by default" approach on Lewisham homes' capital works programmes. All contracts now include commitments around funding or delivering social value and sustainability projects.	Achieved	Short term	Green
2.1.5	Delivery within the Lewisham Home's major works programme of cladding improvements that deliver improved thermal efficiency combined with the highest standards of building safety.	Lewisham Homes	Lewisham Homes' long-term partnerships with Mulalley and United Living as planned major works contractors is a key focus of achieving sustainability goals across the housing stock. Lewisham Homes are working closely with the major works contractors to ensure all works programmes maximise opportunities for carbon reduction. This includes specifications for products and materials as well as opportunities to combine sustainability works into ongoing repair and replacement works. This dovetailing of the external works programme with grants to fund fabric improvement retrofit works to maximise available resources was the basis of an application by the Council in November for £2.9m funding from the Social Housing Decarbonisation Fund as part of £9m decarbonisation works to the Lewisham Homes' estate.	Ongoing	Medium term	Amber
2.1.6	Review and identify the financial, technical, operational and resident satisfaction implications of delivering a new homes programme to a carbon neutral standard, to include a understanding of: Building new homes to Passive House Standards (achieving a SAP rating of 92-100/EPC A); Delivering Energiesprong or similar retrofits; Early adoption of no gas; Meeting the new LETI (London Energy Transformation Initiative) design standard. Use the outcomes from the assessment to push central government and others for additional funding, investment in new technology, regulatory change and other actions that will enable this to be delivered in Lewisham.	Lewisham Homes	New Employer Requirements have been introduced by Lewisham Homes' New Development Team. PassivHaus was evaluated as an option but remains financially unviable. The aim on all new developments is to go beyond current Building Regs for Part L with the new LETI design standards as the aspiration. It is recommended that this action is amended to separate out new build and retrofit requirements (eg Energiesprong).	Achieved	Short term	Green
2.1.7	Implement lessons learned from good practice elsewhere and the assessment in 2.1.6 into delivery on a scheme-by scheme basis including in relation to: the use of pre-manufactured elements; air/ ground source heat pumps; district heat networks; mechanical ventilation heat recovery (MVHR) units; alternative fuels and battery storage; energy efficient heating including underfloor; external shading devices; decentralised heating; green / living roofs and walls; sustainable drainage; AECB (Association of Environmentally Conscious Builders) standards; waste water heat recovery systems; smart water use; procurement and sourcing all materials and products from within 30 mile radius of site.	Lewisham Homes	The approach taken by the Lewisham Homes' New Development Team is to determine the correct technical solution on a site specific basis, drawing on good practice and with a focus on achieving high environmental standards. Where possible contractors use local suppliers and subcontractors although procurement and sourcing all materials and products from within 30 mile radius of site is not always possible.	Ongoing	Medium term	Amber

2.1.8	Evaluate the application of the 'Soft Landings Framework' to new build projects.	Lewisham Homes	New Development has in place an 'approval point schedule' which is akin to the soft landings framework, and every development follows these principles. At key touch points, there are internal gateways and the development team are updating and seeking approval to move the project forward in a way that involves input from key stakeholders. Examples of this are early involvement of the Asset Management team with procurement on onboarding for EV charging point contract and communal heating metering and billing contracts.	Achieved	Short term	Green
2.2.1	Publish a Lewisham Homes to Sustainability Strategy document setting out an overarching approach to carbon reduction aligned to the Lewisham Homes' Asset Management Strategy. Set out baseline environmental performance metrics	Lewisham Homes	Lewisham Homes has put in place a nine-year Sustainability Strategy, taking the housing stock from 2021-2030. This was approved by Board in September 2021 along with the Asset Management Strategy. The overarching aims of the Strategy are in line with the Lewisham Climate Emergency Strategic Action Plan (2020).	Achieved	2020/21	Green
2.2.2	Develop a sustainable working protocol for LHL employees, to include: sustainable staff travel policy, recycling, office etiquette; An updated Employee Code of Conduct; Encouraging vegan catering, local sourcing of supplies; A ban on single-use plastic except where there's a specific health and safety reason.	Lewisham Homes	Lewisham Homes is reviewing working protocols including options to adopt good practice that may be based on a framework such as ISO14001 or the 'Sustainability Reporting Standard for Social Housing' to demonstrate performance and benchmark against similar organisations.	Ongoing	2020/21	Red
2.2.3	Ensure the Old Town Hall refurbishment promotes a sustainable office environment, including: Agile working; Improved cycling facilities and changing rooms; A paperless environment; Installation of smart and energy efficient products such as LED lighting, smart meters and water meters.	Lewisham Homes	This action was adopted by Lewisham Homes when they were operating out of the old Town Hall. As they have relocated to Laurence House the action is no longer relevant. Investment and longer term plans for the Old Town Hall will be addressed in the Council's Strategic Asset Management Plan (see 1.2.1)	Ongoing	Short term	Red
2.2.4	Incrementally upgrade the Lewisham Homes' fleet to low emission combustion and hybrid with the aim of becoming fully powered by renewable electricity as soon as is practicable.	Lewisham Homes	An evaluation of options for adopting electric vehicles as part of the fleet renewal has been completed. Further EV charging infrastructure is needed to support the transition to an electric fleet. The fleet is due for renewal in 2025 and Lewisham Homes will look to align with the Council's policy in this area.	Ongoing	Short term	Red
2.2.5	Recruit 100 resident 'Eco-Champions'.	Lewisham Homes	This action was disrupted by the pandemic. There is currently insufficient internal resource to recruit and support 100 resident 'ECO Champions'. Lewisham Homes already runs a number of resident steering groups and one option is to more explicitly include sustainability/climate change as part of an existing group.	Not achieved	2020/21	Red
2.2.6	Develop a draft Sustainable Estate Parks and Gardens strategy.	Lewisham Homes	The Environmental services team has in place a Sustainable Green Services Policy and this was approved by the Lewisham Homes ELT in December 2021.	Achieved	2020/21	Green
2.3.1	Assess the actions and investment needed to get all domestic buildings in the borough to an average of EPC Band B and develop more sophisticated methods of identifying which properties are energy inefficient, targeting resource where there will be most impact.	Housing Regeneration and Public Realm - Climate Resilience Team	Lewisham's Housing Retrofit Task & Finish Scrutiny Group set out a range of recommendations aimed at improving the thermal performance of housing in the borough across all tenures. Officers are working on a new Housing Retrofit Strategy that will deliver the assessment of actions and investment needed to get all domestic buildings in the borough to the standard needed to meet the net zero ambition. This strategy is expected to be published in 2023. Much of the Council's work to date has focused on the worst performing properties through raising awareness of enforcement (see action 2.3.6), supporting qualifying residents to access grants (see action 2.4.2) and through licensing private rental properties. In relation to licensing just over 1,000 mandatory and additional HMO licenses have been issued by the council. All of these properties will have been inspected for hazards prior to licensing and issued with a schedule of works where necessary. Where landlords are not complying with the conditions of the license the Private Sector Licensing team issue fines and or prosecutions, if informal action to resolve issues does not succeed. In April 2022 a new borough-wide additional licensing scheme was launched meaning that all HMOs in the borough are now licensable. The Private Sector Housing team regularly inspect non-HMO properties in response to complaints from residents about hazards and disrepair. Though powers to enforce in these properties are more limited, the team can also issue non-HMO landlords with statutory notices, fines and prosecutions.	Ongoing	Short term	Red
2.3.2	Inspect all HMOs (house in multiple occupation) in the borough over 5 years, an estimated 6,000 properties, as part of the HMO expanded licensing scheme. Inspections will focus on the eradication of category 1 and 2 hazards on cold and thermal efficiency, especially for vulnerable residents.	Housing Regeneration and Public Realm - Private Sector Licensing and Home Improvements	As set out above, the additional licensing scheme launched in April 2022, so far we have issued 128 licenses. The estimated numbers of HMOs in the borough is between 4000-6000. All properties will be inspected prior to licensing to eradicate Category 1&2 hazards, including excess cold.	Ongoing	Medium term	Amber
2.3.3	Apply to the Secretary of State for a borough-wide licensing scheme with the intention of rolling out licensing to all 26,000 privately rented properties. Inspections of these properties will be conducted on a risk basis including analysis of potential poor standards in the stock, with a particular focus on damp and cold.	Housing Regeneration and Public Realm - Private Sector Licensing and Home Improvements	The public consultation on the introduction of a selective licensing scheme to cover all privately rented properties in the borough in 16 out of 18 wards closed in May 2022. Housing Select Committee discussed the consultation results at its meeting in October 2022, and recommended that the proposals be brought to Mayor and Cabinet for approval. The final proposals are due to be discussed at Mayor and Cabinet on 8th March 2023. If approved, the proposed designation will be submitted to the Department for Levelling Up, Housing and Communities for confirmation by April 2023. The Department's timescales for reviewing submissions vary between 18-24 weeks at present.	Achieved	Short term	Green
2.3.4	Explore the potential to provide a discount on the licence fee if the landlord takes the EPC rating of their property to C or above and assess whether further discounts could apply for ratings above C.	Housing Regeneration and Public Realm - Private Sector Licensing and Home Improvements	The council has considered this option, however, the discount we could offer would be unlikely to act as any kind of incentive to improve properties, given the relative cost of the license versus the average cost of retrofit works. Offering the discount would impact on licensing income and therefore the quality of the service and is therefore not considered to be the most efficient use of resources.	Not achieved	Short term	Red
2.3.5	Use the Council's online presence such as web pages and social media to promote energy efficiency advice to landlords.	Housing Regeneration and Public Realm - Climate Resilience Team	The Council has published practical advice for residents on retrofit https://lewisham.gov.uk/myservices/environment/climate-emergency/improving-the-energy-efficiency-of-your-home as recommended by the Housing Retrofit Task and Finish scrutiny group. Further improvements to the Climate Emergency webpages are planned including publishing a public-facing update on the Council's progress in delivering the ambition for the borough to be net zero carbon by 2030.	Achieved	Short term	Green
2.3.6	Take enforcement under the Domestic Minimum Energy Efficiency Standards Regulation, which allow us to issue a Community Protection Notice (CPN) for renting accommodation under an EPC rating of E.	Community Services - Safer Communities	In 2021 Lewisham was awarded £125k funding under a Government competition to boost engagement and enforcement work on the Private Rental Sector Minimum Energy Efficiency Standards. This funding supported additional capacity in Lewisham and Greenwich Trading Standards Teams and an engagement campaign to raise awareness of the legally enforceable minimum standards that exist and support landlords to improve their properties. The grant also funded partnership work with South East London Community Energy to undertake outreach work with landlords and tenants. In Lewisham 2,840 stakeholders were engaged with and 8 properties improved to an EPC of E or above. A wider ongoing review of enforcement activity across the Council will include consideration work with landlords.	Achieved	Short term	Green
2.3.7	Engage with landlord accreditation schemes that promote energy efficiency.	Housing Regeneration and Public Realm - Private Sector Licensing and Home Improvements	We offer a 20% discount for accredited landlords. This includes the RLA, who are running this campaign and the London Landlord's Accreditation scheme that promotes itself on the basis of being able to assist landlords to obtain grants to improve thermal efficiency (among other things).	Achieved	Short term	Green
2.3.8	Ensure all accommodation used as temporary accommodation by the Council meets the Minimum Energy Efficiency Standards including the current requirement for EPC rating E or above and has all the required gas and electrical certification.	Housing Regeneration and Public Realm - Housing Services	All properties utilised by the Council for the provision of temporary accommodation have to meet the Council's health and safety compliance requirements. This process involves accommodation providers, producing a number of health and safety documents for properties that they provide to the Council. These documents include an EPC, Gas Safety Certificate and Electrical Installation Condition Report. The Council Compliance Officer is being recruited to. This post is responsible for monitoring and managing all health and safety documents for the Council's TA portfolio. This includes monitoring when certificates expire and ensuring providers produce in date complaint certificates in the required timeframe.	Achieved	Short term	Green
2.3.9	Support a new PRS renters' union across the sector to provide a forum for renters, allowing us to raise awareness of the Climate Emergency and measures to tackle it and the union to flag up specific concerns to be addressed	Housing Regeneration and Public Realm - Housing Services	Officers continue to liaise with the lead member for Housing to establish the best way of supporting a PRS renters union within current budgetary constraints.	Ongoing	Short term	Red
2.3.10	Develop a programme to target high risk streets and neighbourhoods with tailored advice including the publication and promotion of initiatives.	Housing Regeneration and Public Realm - Housing Services	The Council's Lewisham Healthy Homes initiative works with local community organisations to provide practical support to households at risk of fuel poverty. In 2021 the Council purchased a licence for Parity Projects Pathways Database of enhanced Energy Performance Certificates which has allowed targeting of higher risk streets where EPCs are lower. This data was used to target a mailing to 5,000 households eligible for funding through the GLA's Warmer Homes Fund.	Achieved	Short term	Green

2.3.11	Develop the use of discretionary grant to support home owners. Roll out an active campaign to use this grant to improve energy standards in those properties that require it most.	Housing Regeneration and Public Realm - Private Sector Licensing and Home Improvements	The Housing Improvements and Assistance team recognises fuel poverty contributes to social and health inequities and works to raise standards in properties where households are at risk in particular the identification of hazards which contribute to poor energy efficiency. Surveyors will carry out an assessment of heating and ventilation in properties as part of inspections of properties where applications have been made for Emergency Home Repairs Grant (EHRG) and Home Repairs Grants (HRG). Grant officers identify and eliminate Category 1 and 2 hazards most of which contribute to poor energy efficiency. The Health and Housing Coordinator who works from University Lewisham Hospital provides a referral pathway for those who attend or are admitted to hospital, suffering ill health due to a cold home. Service improvement planning is currently underway to assess what more the team can do to support the retrofit agenda across the borough.	Achieved	2020/21	Green
2.3.12	Actively participate in a pan-London 'Setting the Standard' initiative that will support inspections of the worst standard of accommodation B&Bs, working to support enforcement action taken in Lewisham and other boroughs to drive up property standards.	Housing Regeneration and Public Realm - Private Sector Licensing and Home Improvements	The Private Sector Housing team still receives reports of Cat 1 hazards identified and takes action on any that are within Lewisham. LBL currently have 90% of its providers on boarded with 4 providers still going through the on boarding process. LBL is working to support these providers in order to complete their registration and on boarding. Once on boarded LBL continues to encourage providers to upload accommodation onto the STS portal in order for them to be inspected and ensure that they meet the required property standards.	Achieved	Short term	Green
2.3.13	Introduce new technology and approaches to identifying cold houses, such as external surveying tools or internal monitoring equipment and including collaboration with a MHCLG funded Greenwich pilot.	Housing Regeneration and Public Realm - Housing Services	The Housing Service proposed this action in 2020 pre covid. Since then the service has built a range of partnerships with other teams and organisations to identify household with poor Energy Performance Certificates (EPC) ratings E, F or G in order to offer owners grant assistance and develop new referral pathways	Ongoing	Short term	Green
2.3.14	Work with the GLA, London Councils and other London Boroughs to support the development of an offer to 'able to pay' home owners to increase home retrofit projects and to build trust and a joined-up approach in the supply chain to promote and respond to demand for home retrofits, such as affordable and independent whole-house audits.	Housing Regeneration and Public Realm - Climate Resilience Team	Lewisham Council has supported South East London Community Energy with a local street based 'able to pay' offer: Eco Street using a collective approach to retrofit assessment with the idea of developing joint purchasing as a way to reduce costs. The Council also continues to be a member of the ECO Furb project offering home owners access to independent advice on retrofit.	Achieved	Short term	Green
2.3.15	Explore potential for working with local community organisations to support bulk purchasing schemes that reduce the costs to homeowners of home energy improvements.	Housing Regeneration and Public Realm - Climate Resilience Team	The Council has worked with the Greater London Authority on the pan-London solar together initiative and supports the work of South London Community Energy on community energy schemes as well as promoting the Mayor of London's Community Energy Fund more widely to local groups. In Round 5 of Solar Together in 2022 Lewisham had the third highest uptake of all London Boroughs, with 216 personal recommendations accepted.	Achieved	Short term	Green
2.3.16	Investigate ways to ensure Lewisham grants are advertised on the government 'save energy' platform and promote the schemes available through the platform to residents.	Housing Regeneration and Public Realm - Housing Services	The Housing team works closely with the Climate Resilience Team who lead on the South London Energy Partnership in order to promote our grants. This allows us to link in with or top up existing government energy schemes to ensure home owners in Lewisham have energy efficient properties.	Achieved	Short term	Green
2.3.17	Apply minimum insulation and efficiency standards to works undertaken at homeowners' properties.	Housing Regeneration and Public Realm - Housing Services	The Disabled Facilities Grant team use grant agreements to raise the thermal efficiency of properties including meeting minimum energy efficiency standards.	Achieved	2020/21	Green
2.3.18	Engage local registered social providers to encourage sharing of practice on carbon reduction and supporting all RPs to take meaningful action in relation to their stock in the borough.	Housing Regeneration and Public Realm - Housing Services	A meeting with registered providers with local stock was held in September. The meeting was well attended and included a range of topics including the Social Housing Decarbonisation Fund. Further meetings of this forum are planned. An informal retrofit group involving officers and relevant leads from local social housing providers Lewisham Homes, Phoenix Community Housing and Regenter B3 meets monthly.	Achieved	2020/21	Green
2.3.19	Officers within the Private Sector Housing Agency team will use public transport for all routine inspections.	Housing Regeneration and Public Realm - Housing Services	This action was proposed by the Private Sector Housing Agency team in 2020 pre covid. Wider plans to develop a sustainable staff travel plan are under development.	Achieved	2020/21	Green
2.4.1	Expansion of the South London Energy Efficiency Project led by Lewisham, providing practical support to vulnerable residents in south London. Support 1,600 households in 2019/20. Seek external funding and partnerships to deliver the same in 2020/21.	Housing Regeneration and Public Realm - Climate Resilience Team	Lewisham Council leads the South London Energy Efficiency Partnership covering 12 South London Boroughs delivering a practical energy advice service targeted at low income and vulnerable households helping them stay warm in Winter. The advice service, South London Healthy Homes, has secured funding from a wide range of sources including the Greater London Authority, the Ofgem Redress Funds, British Gas Trust, UK Power Networks and participating boroughs. In the three years since 2019/20 the programme has supported 8,699 households across South London including 1,602 in Lewisham.	Achieved	2020/21	Green
2.4.2	Support low income and vulnerable residents in accessing external sources of funding for heating, insulation and ventilation.	Housing Regeneration and Public Realm - Climate Resilience Team	Lewisham Council has enabled 1,242 South London households including 226 Lewisham households access funding through the Government's Energy Company Obligation placed on energy suppliers to cover the cost of heating, insulation and ventilation improvements in low income households. The Council works with South East London Community Energy through our energy advice service Lewisham Healthy Homes to support those most vulnerable to access funding from energy suppliers, the Greater London Authority and other sources.	Achieved	2020/21	Green
2.4.3	Undertake an assessment of the equalities implications of climate change and of the actions at national, regional and local level to reduce carbon and work with partners to find additional ways to support affected groups to mitigate the impact. Review the use of the Climate Just tool to understand the impact across different communities in the borough.	Housing Regeneration and Public Realm - Climate Resilience Team	Lewisham Council's declaration of a climate emergency was founded on the understanding that the climate crisis is a social justice issue. The 2022 Mayor of London's Borough of Culture programme in Lewisham has created opportunities to engage with and amplify the voices of a broad range of communities across the borough. Commissions within the BoC programme specifically seeking to explore diversity and equalities issues include the Artist of Change programme, Climate Home and Hope 4 Justice. Further work is still needed to understand and respond to the wider equalities issues relating to the impact of climate change and delivery of the ambition to be net zero carbon by 2030.	Ongoing	2020/21	Red
2.5.1	Adopt a new Local Plan for the borough with Climate Emergency embedded within the document and development management policies supporting delivery of the ambition to be carbon neutral including achieving the London Plan policy for major developments to be zero carbon. We will seek that proposals for new self-contained major and minor residential development achieve the BRE Home Quality Mark and that proposals for major residential domestic refurbishment achieve a certified 'Excellent' rating under the BREEM Domestic Refurbishment 2014 scheme, or future equivalent; and that proposals for new non-residential development of 500 square metres gross floor space or more, including mixed-use development, achieve an 'Excellent' rating under the BREEM New Construction (Non-Domestic Buildings) 2018 scheme, or future equivalent. We will seek that development proposals for major non-residential refurbishment, including mixed-use development, achieve a certified 'Excellent' rating under the BREEM Non-Domestic Refurbishment scheme, or future equivalent.	Housing Regeneration and Public Realm - Planning	Lewisham Council consulted on a new local plan in April 2021 and a revised version was submitted to Mayor and Cabinet in September 2022 as part of the approval process. Responding to the Climate Emergency is one of 9 strategic objectives in the new Local Plan.	Ongoing	Short term	Red
2.5.2	Monitor and report on the transition to a carbon neutral borough through implementation of the new Local Plan through the Authority Monitoring Report process to regularly assess performance against our strategic planning objectives.	Housing Regeneration and Public Realm - Planning	The Authority Monitoring Plan continues to be an ongoing action and has included information relating to delivery of the Council's ambition for Lewisham to be net zero carbon.	Achieved	2020/21	Green
2.5.3	Ensure that developments which cannot meet onsite carbon targets comply with policy through payment into Lewisham's carbon offset fund. The fund will be used to drive local innovation and investment in ways that meet our objective to ensure our Climate Emergency responds to the needs of vulnerable residents. Annex B sets out further details of the approach we propose.	Housing Regeneration and Public Realm - Climate Resilience Team	Engagement with developers has continued with the aim of seeking to maximise the level of onsite delivery to meet planning policy but where this cannot be achieved the use of the Lewisham Carbon Offset Fund. Lewisham's Carbon Offset Fund has supported energy efficiency works with low income households in the borough, school retrofit works and design works for heat networks.	Achieved	Short term	Green

2.6.1	Work with Veolia to implement the joint memorandum of understanding agreed with the Council to deliver opportunities to utilise unused heat from the SELCHP facility to supply local homes.	Housing Regeneration and Public Realm - Climate Resilience Team	In 2020 Veolia were awarded £5.5 million Government funding to deliver a core network from South East London Combined Heat and Power facility to 3,500 homes in Convoys Wharf in Deptford. Construction of the network has been delayed by the commercial negotiations between Veolia/SELCHP and the developer. Construction is now expected to start in 2023.	Ongoing	Short term	Red
2.6.2	Work with Lewisham Homes to evaluate the potential for connecting properties to a network supplied with heat from SELCHP.	Housing Regeneration and Public Realm - Climate Resilience Team	In May 2022 Lewisham Council completed detailed technical economic assessments of heat networks in three locations Catford, Lewisham Town Centre and north Lewisham based on the findings of a borough-wide energy masterplan published in 2020. The study in North Lewisham has found a viable connection is possible to the Veolia-led connection planned between SELCHP and Convoys Wharf. This connection could serve Eddystone and Daubney Towers where infrastructure works are already needed to replace gas connections to the towers as well as other potential public sector buildings in the location. These works would involve the removal of 300+ gas boilers and save 400tCO2 per year. Officers have secured an additional £150k funding from the GLA's Local Energy Accelerator Fund to deliver the detailed project development required.	Achieved	Short term	Green
2.6.3	Carry out a borough-wide energy masterplanning study to assess opportunities for clusters of heat demand and identify the potential low carbon solutions to meeting that demand. This masterplan will inform planning guidance, development of the Council's new build housing programme and refurbishment plans for the Council's existing housing. The masterplan will be completed in 2020.	Housing Regeneration and Public Realm - Climate Resilience Team	In 2020 the Council published the outcome of energy masterplanning work https://lewisham.gov.uk/-/media/files/imported/accessible-lewisham-energy-masterplan.ashx?la=en that shows the potential role heat networks could play in Catford, Lewisham and the north of the borough. A further £67k funding was secured from the Government's Heat Network Delivery Unit to undertake techno economic studies of those three areas which were completed in May 2022. The outputs from this work are now part of the evidence base in relation to planned and future developments in those areas and supporting information to access further grant funding to upgrade social housing in North Lewisham.	Achieved	2020/21	Green
2.6.4	Use new development management policies from the Local Plan and the borough-wide masterplanning to direct new connections and support viability of new heat networks.	Housing Regeneration and Public Realm - Climate Resilience Team	Lewisham Council consulted on a new local plan in April 2021 and a revised version was submitted to Mayor and Cabinet in September 2022 as part of the approval process. Responding to the Climate Emergency is one of 9 strategic objectives in the new Local Plan. Policies (SD4) in relation to Energy Infrastructure state that development proposals in areas where heat networks exist or have been identified as likely by energy masterplanning should connect to that network or be designed to be ready to connect. All major developments within priority areas should be designed with communal low temperature heating systems to enable such connections.	Achieved	Short term	Green
DECARBONISED TRANSPORT						
3.1.1	Work with TfL to review the scope to realign existing regional transport targets to 2041 with the 2030 ambition to respond to the Climate Emergency. Evaluate the implications of any realignment in terms of funding, existing and planned programmes and the development of the next version of Lewisham's Local Implementation Plan.	Housing Regeneration and Public Realm - Strategic Transport	Officers continue to work with TfL to review scope and realign the targets; this will include active travel and sustainable transport. Lewisham's Local Implementation Plan prioritises support for active travel and sustainable forms of transport. It should be recognised however that it is unrealistic that TfL will change pan-London targets to suit Lewisham. Low Traffic Neighbourhoods in Lewisham and Lee Green have been made permanent, incorporating complementary measures to encourage modal shift to more sustainable forms of travel and healthier and greener neighbourhoods. We are currently undertaking the Sustainable Streets consultation with the aim to encourage active travel, create safer neighbourhoods, improve air quality, increase greenery/trees, in line with the Council's Climate Emergency priorities. We are also introducing EV points as part of an Integrated Mobility Strategy. Resource and funding issues have not recovered since pre-pandemic levels.	Ongoing	Short term	Red
3.2.1	Complete the Deptford Parks Liveable Neighbourhoods programme supporting healthier streets, improved air quality and support for walking and cycling. The works include a new pedestrian and cycle route along Surrey Canal Road, improvements to existing walking/cycling routes, road closures and play area outside a school and improved crossing points. The scheme is due to complete in 2021.	Housing Regeneration and Public Realm - Strategic Transport	This scheme was funded by TfL Liveable Neighbourhoods funding, a funding stream paused at the start of the pandemic and not subsequently reinstated. A small amount of funding was made available in 20/21, which was used to deliver improvements to Woodpecker Rd, the Rolt Street pedestrian and cycle zone and make the temporary closure of Scaven Rd and Prince Street permanent. LIP funding has remained below pre-pandemic levels and re-prioritisation will be required - officers continue to work with TfL to secure the funding to complete the scheme. The Scaven Road and Prince Street road closures have been made permanent. The intention is to do the same with Rolt Street pedestrian and cycle zone. Officers also plan to progress with the Canal Street works in 2023/24.	Ongoing	Short term	Red
3.2.2	Implement a Healthy Neighbourhoods programme to reduce traffic congestion, improve air quality and encourage sustainable modes of travel. Proposals are informed by discussions with residents and key stakeholders living within the neighbourhood area. Areas prioritised by the current programme include Lewisham and Lee Green, East Sydenham, Telegraph Hill, and Bellingham. The intention is to implement a rolling programme across every area of the borough by 2030.	Housing Regeneration and Public Realm - Strategic Transport	Following a decision by Mayor & Cabinet in January 2022 the permanent traffic orders have been approved and work on the complementary measures is progressing, with further monitoring planned in April 2023. In December 2022 Mayor and Cabinet approved proposals for a Sustainable Transport and Parking Improvements Programme which will review controlled parking zones and parking with a view to take an area-based approach to controlling parking alongside improvements to promote walking and cycling including footway widening, trees and planting, bike hangers as well as electric vehicle charging and car clubs. Mayor and Cabinet also approved proposals to amend the Council's 2014 Parking Policy to streamline the process of implementing controlled parking zones. The complementary measures for the Lewisham and Lee Green low traffic neighbourhood will have been completed by March 2023. Phase 1 consultations for the Sustainable Streets programme have now commenced and the feedback will be used to inform recommendations to Mayor and Cabinet before the summer. The Council have commissioned a study to bring forward further areas as Healthy Neighbourhoods within the borough.	Achieved	Short term	Green
3.2.3	Engage more schools in the STARS accreditation process by developing a School Travel Plan, with a target of 50% of primary schools participating by 2021. A range of initiatives led by the school will be developed to encourage walking and cycling to school. Implement a programme of School Streets and Play Streets outside schools, whereby the road is closed to traffic at school pick up and drop off. Offer schools support to arrange Play Street events throughout the year.	Housing Regeneration and Public Realm - Strategic Transport	Lewisham has one of the greatest number of school streets in London with 48 school streets covering 39 schools, an increase of one school street for an additional school which will be in place by December 22. These School Streets have roads closed to traffic at school drop off and pick up times, including physical measures to discourage car use during school drop off and pick up times reducing congestion and improving air quality and road safety around the school site. Schemes have been developed for a further nine schools pending funding. The remaining school sites without restrictions are those that are more practically challenging to deliver and likely to be more costly and potentially more sensitive. For these School Zone approaches are being considered. Following a decision by M&C in January 2022 the permanent traffic orders in Lewisham's Low Traffic Neighbourhood have been approved and work on the complementary measures is progressing. Further monitoring to be undertaken in April 2023. The School Streets programme will help to increase the number of schools with a School Travel Plans. School participation in the STARS programme was affected by Covid_19, and a reduction in funding and capacity.	Achieved	2020/21	Green
3.2.4	Deliver a programme of local transport improvements to provide a better walking environment along Lewisham High Street.	Housing Regeneration and Public Realm - Strategic Transport	Lewisham High Street is a TfL road, with Lewisham having limited influence. However, officers continue to work with TfL to develop funding opportunities to improve the walking environment. The Council's recent success in the Government's Levelling Up Fund will bring much needed investment in Lewisham Town Centre including in relation to public realm and improvements for pedestrians and cyclists. A public consultation for pedestrianisation of Lewisham High Street is planned for 23/24.	Ongoing	Short term	Red
3.2.5	Implement a programme of local transport improvements to support and encourage cycling in the borough, including more Cycleways, cycle hangers, cycle parking, dockless bike hire scheme and the introduction of contraflow lanes to one-way routes. Consult locally on reallocating road/parking space to achieve these outcomes where there are opportunities to do so.	Housing Regeneration and Public Realm - Strategic Transport	Cycleway 4 opened in September 2022. A number of temporary modal filters were introduced across the borough to prioritise cycling during the pandemic. Subject to the outcome of consultation these may be made permanent. There is a temporary TfL scheme on the A21 which, as part of the London Street Space Programme, provided cycle facilities between Catford and Lewisham on the A21. It was introduced under a Temporary Traffic Order and in January 2022 was transitioned to an ETO. The Council continues to roll out cycle hangers across the borough, with plans for an e-bike trial across the borough in 2023. Deptford Church street cycleway is being developed, we are continuing to implement cycling contra flow measures along a number of one way streets and measures to link a number of green spaces are being developed. We have installed 75 cycle hangers as part of the LIP funding and plan to install a further 75 cycle hangers in 23/24.	Achieved	Short term	Green

3.2.6	Develop proposals for Healthy Street corridors to secure additional funding to implement. The Lewisham Spine/A21 Healthy Streets corridor working collaboratively with TfL to support better connections between the south and north of the borough. The proposals also include a major public realm improvement scheme at Deptford's Church Street. Work in partnership with TfL to transform the A2/New Cross Road, including improvements to the pedestrian and cycling environment, without detriment to bus journey times, and rebalance the dominance of vehicles. Improvements to public realm in the Ringway Corridor to provide better active travel and public transport links through reallocation of road space between Southend Lane and Whitefoot Lane.	Housing Regeneration and Public Realm - Strategic Transport	Deptford Church street cycleway is being developed, design is underway and construction programmed to start later in the year. This is part of the Council's LIP Submission for 23/24. We are working with key partners to help shape the final proposals, including Lewisham Cyclists.	Ongoing	Long term	Green
3.2.7	Reflect the Council's transport and public realm aspirations in the emerging masterplan for Catford, including the realignment of the South Circular (A205), and better pedestrian and cycling routes and facilities.	Housing Regeneration and Public Realm - Inclusive Regeneration	The Catford Town Centre Framework was adopted in July 2021 and forms part of the evidence base for the council's Regulation 19 Local Plan.	Achieved	Short term	Green
3.2.8	Deliver a programme of measures to reduce road danger including traffic calming measures to support compliance with the 20 mph speed limit across the borough and other measures to reduce the dominance, speed and number of the most dangerous vehicles on the borough's roads.	Housing Regeneration and Public Realm - Strategic Transport	The Council remains committed to supporting the Vision Zero principles and are actively working on 20mph speed compliance monitoring and implementation of small schemes to address the areas of noncompliance, working in tandem with the Police and Road Safety Partnership. Speeding remains a criminal offence and consequently is enforced by the Police	Achieved	Short term	Green
3.2.9	Extend the programme to promote healthier lifestyles and active travel options in the borough, including cycle training for adults and children, cycle loan scheme, travel planning for schools, activities with communities to encourage walking and cycling and address real or perceived barriers to the take-up of active travel in the borough.	Housing Regeneration and Public Realm - Strategic Transport	Funding to deliver cycle training for both schools and adults was withdrawn by TfL from June to October 2022, but has now been secured for cycle training through LIP for school children and a bid has been submitted for further funding for 23/24. We also run a series of Doctor Bike workshops to provide training to ensure bikes are used safely and encourage uptake of active travel. Try Before you Bike has been introduced to Lewisham offering a variety of bikes on loan, this includes E bikes, Cargo Bikes, Children's bikes and Adapted bikes as well as standard adult bikes.	Ongoing	Short term	Red
3.2.10	Explore opportunities and seek funding to improve cycling provision on other distributor routes (approx. £500k-1m per corridor depending on length and types of measures required)	Housing Regeneration and Public Realm - Strategic Transport	The Transport and Highways team is reviewing the borough's cycling strategy, which will seek to support commitments to promote cycling as a preferred mode of travel for shorter journeys and development of a network of cycle routes connecting our town centres and other places of interest. The strategy will help better support bids for future funding including a submission for LIP funding for 23/24 to improve the cycle network within the borough in line with our transport strategy.	Ongoing	Medium term	Amber
3.3.1	Progress aspirations in the Council's Vision for Rail including: Providing sufficient capacity between the borough and east London employment areas; Increase rail access to and from Lewisham's growth areas; Improve rail connectivity and services, especially east-west links in the south of the borough; Enhance the quality of stations and provide step-free access at all stations in the borough; Improve the connectivity between stations and their local area.	Housing Regeneration and Public Realm - Strategic Transport	Lewisham does not run these services and can at best try to influence them. The Council will continue to work with partners, stakeholders, TfL and train operators to deliver the Vision for Rail. Key to this vision is the extension of the Bakerloo Line. This is subject to external funding, TfL approval and rail operators involvement - given the current financial situation large projects like these where strategy, funding and implementation lay outside the sphere of LBL's influence may not be delivered. Further work to scrutinise Southeastern's updated timetable are planned in 23/24.	Ongoing	Long term	Green
3.3.2	Work with partners locally, regionally and nationally to secure the investment needed to implement the Bakerloo Line Extension into Lewisham. Achieving this will be of huge strategic importance to achieving decarbonised transport in the borough.	Housing Regeneration and Public Realm - Strategic Transport	TfL have put this on hold pending funding - the Council continues to lobby for this scheme to be prioritised.	Ongoing	Long term	Green
3.3.3	Work with partners to secure the other infrastructure investment fundamental to achieving the outcomes of the Mayor's Transport Strategy and the Council's ambition to be carbon neutral by 2030 as set out in the 'Council's Rail Vision' including Lewisham Station & Strategic Interchange, Brockley Interchange, New Bermondsey Station, and the creation of step free and accessible public transport across the network.	Housing Regeneration and Public Realm - Strategic Transport	The Council continues to work collaboratively with partners to pursue Lewisham's objectives - funding for any improvements in rail is extremely challenging in the current financial climate.	Ongoing	Long term	Green
3.3.4	Work with TfL to secure improvements to the reach and frequency of the bus network alongside improvements to bus journey times.	Housing Regeneration and Public Realm - Strategic Transport	TfL's bus passenger numbers are about 70% of pre-covid levels which is affecting income, the Council continues to work collaboratively with TfL to pursue Lewisham's objectives. We continue to work with TfL who have confirmed continuing upgrades to bus shelters and real-time travel update improvements to provide a effective bus service for Lewisham residents.	Ongoing	Long term	Green
3.4.1	Work with partners to achieve an ambition of at least one electric vehicle charging point within a 500m walk of every resident, to support the extension of the ULEZ by 2021.	Housing Regeneration and Public Realm - Strategic Transport	The Council continues to work towards the ambition to increase EV infrastructure across Lewisham and supported the extension of the ULEZ in 2021. There are currently 153 electric vehicle charging points across the borough. The Council is refreshing its strategic approach to electric vehicles and will continue to seek additional funding to continue to increase availability of chargers to residents. Plans to consult on increasing controlled parking were approved at Mayor and Cabinet in December will be expected to create additional opportunities for charging points. The ambition to increase EV infrastructure across Lewisham and a new EV Strategy to be	Achieved	Short term	Green
3.4.2	Work with TfL to bring more low emission buses into Lewisham, enabling the target for all new single deck buses to be zero emission	Housing Regeneration and Public Realm - Strategic Transport	Awaiting TfL's response with their progression - officers are seeking updates on their plans; which is dependent on TfL funding.	Ongoing	2020/21	Red
3.4.3	Implement the Council's 2020 Parking Policy Update, including an emissions-based charging scheme for residents, business and staff permit holders, and an increase in the Pay and Display tariff.	Housing Regeneration and Public Realm - Strategic Transport	Completed.	Achieved	Short term	Green
3.4.4	Review the Council's Controlled Parking Zone (CPZ) policy to support alignment of strategic decisions on parking with delivery of the Healthier Neighbourhoods Programme.	Housing Regeneration and Public Realm - Strategic Transport	In December 2022 Mayor and Cabinet approved proposals for a Sustainable Transport and Parking Improvements Programme which will review controlled parking zones and parking with a view to take an area-based approach to controlling parking alongside improvements to promote walking and cycling including footway widening, trees and planting, bike hangers as well as electric vehicle charging and car clubs. Mayor and Cabinet also approved proposals to amend the Council's 2014 Parking Policy to streamline the process of implementing controlled parking zones. Phase 1 consultations have now commenced.	Achieved	Short term	Green
3.4.5	Develop more radical approaches to workplace parking levies supported by travel planning, with LBL leading by example as well as retail/leisure centre parking levy. Review potential for all money raised to be reinvested into transport improvements.	Housing Regeneration and Public Realm - Strategic Transport	The Council is currently consulting on a new Sustainable Streets programme which will reduce commuting parking pressures and encourage more sustainable/active forms of travel to align with the Council's wider strategies and policies.	Achieved	Short term	Green
3.4.6	Support a modal shift away from individual car ownership through the creation of a new floating car club permit for operators which seeks to expand provision and availability of car club vehicles across the borough.	Housing Regeneration and Public Realm - Strategic Transport	Officers continue to work with car club operators across the borough to increase the number of residents using car clubs instead of private vehicles. As part of the Sustainable Streets programme, more car club bays will be delivered to support an uptake in car clubs.	Achieved	Short term	Green
3.4.7	Commence implementation of powers to enforce against idling vehicles. This will be supported by ongoing campaign work on this issue, including working closely with schools, which will be a priority area for enforcement.	Housing Regeneration and Public Realm - Environmental Health	The Council is installing anti-idling signage near local schools across the borough with 75 schools scheduled to be covered by the end of 2022 and local campaigns encouraging drivers to comply. In 2019 the Council introduced an £80 fine for engine idling. The Council's 2022-27 Air Quality Action Plan was approved by cabinet in July 2022 and also includes measures to deal with vehicle idling including a School Air Quality Action Plan. Officers are working with local head teachers and parents to reduce air pollution around schools with workshops on air quality and idling planned working with air Quality Champions. These volunteers are promoting the key message of anti-idling and helping run anti-idling events at schools.	Achieved	2020/21	Green

GREEN ADAPTIVE LEWISHAM

4.1.1	Use an evidenced-based approach to increasing tree stocks, tree canopy and linear metres of hedgerow. Explore 'self-funding' models proposed by local community organisations. We will work with local community organisations to develop the concept of a new Lewisham Climate Emergency Tree initiative. We will carry out a scoping exercise in partnership with the Healthy Neighbourhoods programme to identify new potential locations for trees and to identify the right kind of tree for the right location seeking to increase street tree canopy cover in areas with a deficiency of street trees. We will advise developers on the right kind of trees for new developments to maximise the ecological and adaptive benefits.	Community Services - Parks Sports and Leisure	Between June 2021 and June 2022: Parks trees: 790 whips planted; 174 standard trees planted 294 standard street trees planted in partnership with Street Trees for Living. This partnership means the Council's street trees have an excellent survival rate of 98%, significantly higher than the industry standard of 70%. This autumn/winter the Council plans to plant circa 550 trees. Hedgerow: 57 linear metres @ Brookmill, Ladywell, Horniman Triangle and River Pool Linear Park A project identifying vacant tree pits where new street trees can be planted is ongoing.	Achieved	2020/21	Green
4.1.2	Review Lewisham's Flood Risk Management Strategy to promote sustainable drainage solutions including new flood storage areas in green spaces, flood risk mitigation interventions at areas at high risk and development of tree pits and other storage solutions for surface water flooding.	Housing Regeneration and Public Realm - Climate Resilience Team	Mayor and Cabinet approved a new Flood Risk Management Strategy for the borough in September 2022. Longstanding plans to increase flood storage at Beckenham Place Park will make a significant difference to river and surface water flood risk across the length of the borough and the Beckenham Place Park flood alleviation scheme now has planning permission and has secured £1.2mil of funding from the Environment Agency to deliver flood mitigation works. The scheme will project over 800 properties from fluvial flooding.	Achieved	2020/21	Green
4.1.3	Develop highways-based Sustainable Urban Drainage solutions to reduce the risk of surface water flooding reduce pressures on highways drainage.	Housing Regeneration and Public Realm - Climate Resilience Team	Mayor and Cabinet approved a new Flood Risk Management Strategy for the borough in September 2022. The Strategy set out a strategic vision for flood risk management which includes slowing down and using water as a valuable resource. Sustainable drainage projects are a key part of the strategy's approach to achieving this Recent schemes delivered in public realm include: Baring Road SuDS Tree Pits - 406m2, Holbeach Road Rain Gardens - 264m2. Total area of hardstanding disconnected = 670m2 SuDS schemes programmed in and partially funded: Coulgate Street Pocket Park, Old Bromley Road Blue Green Link, Raffern Primary, Dalmain Primary, John Stainer Primary, Deptford Park Primary - totalling hardstanding areas of 7900m2	Achieved	Short term	Green
4.1.4	Refuse requests for installation of crossovers on the footway to accommodate parking on new front driveways unless there is evidence that planning consent is obtained and the driveway is permeable and/or drainage discharges to a soft landscaped area.	Housing Regeneration and Public Realm - Planning	Mayor and Cabinet approved a new Flood Risk Management Strategy for the borough in September 2022. Action 4.02 in the Flood Strategy commits to providing guidance for homeowners to help them de-pave front gardens as well as on creating sustainable drainage features. Officers will use the Council's website as part of this work. Further outreach work with residents to encourage action on flood risk is also happening as part of the Borough of Culture 'In Living Memory' programme drawing on the borough's experiences of the 1968 floods.	Ongoing	2020/21	Red
4.1.5	Where appropriate and safe to do so, reduce the amount of waste transported to recycling centres by managing waste in the park it was generated in e.g. use dead leaves as mulch on shrub beds.	Community Services - Parks Sports and Leisure	The use of a shredder and shredded material as part of the horticultural shrub process is scheduled to be trialled. 186 tonnes was removed from June 21- March 22 10 tonnes composted	Achieved	2020/21	Green
4.1.6	Work with local user groups to support the implementation of projects designed to benefit locally appropriate biodiversity and engagement.	Community Services - Parks Sports and Leisure	The Lewisham Biodiversity Partnership (including the Nature Conservation Team) ran 614 events engaging 3,759 people in 2021-22. Members of the partnership installed 2 bat boxes, 33 bird boxes, 11 loggeries and conducted 214 surveys (e.g. bird, butterfly, plant)	Achieved	2020/21	Green
4.1.7	Develop an integrated approach to green infrastructure across the public realm across our work on parks, highways, regeneration, housing and through our planning function.	Community Services - Parks Sports and Leisure	The Council's new Parks and Open Spaces Strategy agreed was agreed by Mayor and Cabinet in June 2020. The new draft Local Plan incorporates robust policies on Green Infrastructure recognising its contribution to tackling climate change. The Council seeks to take a collaborative cross service approach to promoting and investing in green infrastructure bringing together Planning, Highways and the Green Scene/Parks teams to develop and fund neighbourhood projects such as the greening fund and additional street tree planting through Street Trees for Living.	Achieved	Short term	Green
4.1.8	Review and develop the Council's response to prolonged period of high temperatures to inform and support the Council's emergency response process. This will include 'cool' refuges in public buildings, identifying at risk groups and implications for relevant service teams.	Housing Regeneration and Public Realm - Climate Resilience Team	Lewisham Council contributed to a London-wide mapping exercise to identify suitable locations for public refuge during prolonged hot weather and have also participated in the London wide Climate Vulnerability Mapping work. The Council's Resilience Team has provided training and support for staff on hot weather impacts to improve forward planning and business continuity during extreme temperatures. This work was tested fully in Summer 2022.	Achieved	2020/21	Green
4.1.9	Adopt a new Local Plan that will seek to ensure that all development proposals identify and retain existing habitats and features of biodiversity value. Use the new Local Plan to drive positive gains for biodiversity, particularly in areas that are deficient in public access to nature conservation.	Housing Regeneration and Public Realm - Planning	Lewisham Council consulted on a new local plan in April 2021 and a revised version was submitted to Mayor and Cabinet in September 2022 as part of the approval process. Responding to the Climate Emergency is one of 9 strategic objectives in the new Local Plan which incorporates robust policies on Green Infrastructure and biodiversity.	Ongoing	2020/21	Red
4.2.1	Introduce the Clean Air Neighbourhoods where communities can cooperate in measures that will reduce carbon with the aim of being an approved 'Clean Air Neighbourhood', allowing them to influence future development and businesses into their area.	Housing Regeneration and Public Realm - Environmental Health	To avoid confusion or duplication the concept of Clean Air Neighbourhood is not something the Council is currently using to describe local area based projects with communities to improve air quality. There are however a number of active programmes that are achieving the aims of this action. Lewisham has one of the greatest number of school streets in London with 48 school streets covering 39 schools, an increase of one school street for an additional school which will be in place by December 22. These School Streets have roads closed to traffic at school drop off and pick up times, including physical measures to discourage car use during school drop off and pick up times reducing congestion and improving air quality and road safety around the school site. Schemes have been developed for a further nine schools pending funding. The remaining school sites without restrictions are those that are more practically challenging to deliver and likely to be more costly and potentially more sensitive. For these School Zone approaches are being considered. Following a decision by M&C in January 2022 the permanent traffic orders in Lewisham's Low Traffic Neighbourhood have been approved and work on the complementary measures is progressing. Further monitoring to be undertaken in April 2023.	Ongoing	Short term	Red
4.2.2	Develop joint public engagement on air quality and climate change to raise awareness and create additional impetus for action.	Chief Executive's Directorate - Communications	The Council has promoted a wide range of initiatives that deliver air quality and carbon reduction benefits including cycling, anti-idling and on green infrastructure. Lewisham's programme as London Borough of Culture in 2022 has also including high profile commissions engaging with the issues of climate change, air quality and the links between environmental and social justice. This has included 'Breathe 22', Climate Home, Lewisham Speaks, Hope 4 Justice, The Gretchen Question and a number of small locally based initiatives funded through the Borough of Culture small grants programme. Air Quality work has been promoted with schools via the schools portal and Schools Climate Network. Lewisham is increasing and updating our current monitoring sites across the borough, there are 5 real time air quality monitoring sites and in addition monitoring of NO2 is undertaken by 141 diffusion tubes, at strategic locations including those in the most sensitive areas. In addition 11 Breathe London sensors are being developed/progressed as part of the Bell Green Air Quality Project.	Achieved	2020/21	Green
4.2.3	Consider future alternative permitting arrangements for ice cream vans for example only permitting electric ice cream vans from trading on Lewisham land but also investigate more radical solutions such as avoiding vehicles altogether creating opportunities for local mobile vendors using carts instead of a vehicle.	Community Services - Parks Sports and Leisure	Current concessions – are at Deptford/Blackheath/Hilly Fields/Mayow implementation of this action has been delayed due to the uncertainty about the future of the current grounds maintenance contract and issues around return on investment. All ice cream concessions in parks are not permitted to idle. Quotes have been received for electric installation and the prices are dependent on location but range £500 -1,500 + VAT.	Ongoing	2020/21	Red
4.3.1	Investigate the possibility of opening a re-use shop within the borough. A full project plan will be created with an aim to divert waste from incineration or recycling and encourage the reuse of items as directed by the waste hierarchy.	Housing Regeneration and Public Realm - Street and Environmental Services	Constrained space at Lewisham's recycling centre mean that there are severe limitations on retaining items for reuse on site. Investigations to seek alternative suitable premises or alternatives such as virtual re-use shop are ongoing.	Ongoing	Short term	Red
4.3.2	Identify and develop proposals to make Lewisham's Reduction and Recycling Strategy a fully carbon neutral strategy on waste.	Housing Regeneration and Public Realm - Street and Environmental Services	Lewisham's Waste Strategy 2021-31 was approved in 2021 and contributes to achieving the ambition for the borough to be net zero carbon through waste reduction, reuse and recycling using the waste hierarchy as the principle driver. A new Reduction and Recycling Plan 2023-25 sets out a range of measures to delivering on the ambition of the overarching Waste Strategy including on textiles, plastics and food, three of the most carbon intense and environmentally damaging materials. Lewisham already achieves zero waste to landfill and has achieved annual reductions in waste per household each year. Food waste collections were trialled in 2022 in 2 primary schools and this service is being rolled out to all Lewisham Schools. Testing of food waste in flats is currently happening and following this trial will be extended in 23/24.	Achieved	Short term	Green

INSPIRING LEARNING AND LOBBYING

5.1.1	Implement an integrated communications plan, reviewed and updated on a rolling basis. The Lewisham Climate Emergency Working Group and staff forum will support this work by identifying gaps and opportunities for developing further initiatives.	Housing Regeneration and Public Realm - Climate Resilience Team	A Climate Emergency Communications Plan was produced in October 2021 and updated in June 2022. The Council has established a resident contact group and promoted the Council's work and wider issues to residents through regular mailings as well as through Lewisham Life, the Council website and social media channels. An internal working group 'Inspiring Learning Lobbying' has met quarterly to bring together different service areas involved in communications and engagement activities in different ways. This includes: Communications, the Climate Resilience Team, Libraries, Young Mayor's Team, Community Development and CYP. Targets within the Communications Plan include <ul style="list-style-type: none"> +10% clicks on climate webpage, +10% increase in visits to Try Before You Bike webpage +10% increase in sign-ups to our Climate Emergency Action Plan newsletter 	Achieved	2020/21	Green
5.1.2	Identify and implement opportunities to engage, inspire and learn from groups reflecting the diversity of our borough in terms of age, ethnicity and socio-economic background.	Housing Regeneration and Public Realm - Climate Resilience Team	Lewisham's London Borough of Culture Year 2022 has had a strong focus on diversity and climate with a wide range of commissions and events celebrating diversity across the borough and using this as a lens to explore wider issues around climate change. Over 200,000 people attended Borough of Culture events in Lewisham, in a survey 83% agreed with the statement "It is important for Lewisham and its people to respond to the climate crisis". In 2022 the Council launched a "Talking My Language" campaign specific aimed at engaging with residents and communities with knowledge of other languages.	Achieved	2020/21	Green
5.1.3	Publish a practical guide to action on carbon reduction for residents.	Housing Regeneration and Public Realm - Climate Resilience Team	A Residents' Guide to action on the climate crisis was published in 2021 and updated in 2022. https://lewisham.gov.uk/myservices/environment/resident-guide A guide to retrofit was published in December 2022. https://lewisham.gov.uk/myservices/environment/climate-emergency/improving-the-energy-efficiency-of-your-home	Achieved	2020/21	Green
5.1.4	Develop the proposals within Lewisham's Borough of Culture programme to create new innovative ways to engage with residents on climate change through culture and collective action. Our plan is that 2021 becomes a year of concerted action on carbon reduction across Lewisham.	Housing Regeneration and Public Realm - Climate Resilience Team	Lewisham Speaks was the result of a 6-month artists' residency within the Climate Resilience Team at Lewisham Council in 2022 which also included a borough-wide programme of engagement with residents and community organisations in each of Lewisham's 19 wards. The result of this immersive activity was a show that in Summer 2022 was performed twice in each ward, given a Council-specific performance and was part of Lewisham's People's Day 2022. Lewisham Speaks engaged with over 5,000 residents and, alongside the show itself created a map with content from people interacting with performances and a manifesto based on the views of people from across the borough. The materials from the show are now available to Lewisham Schools to perform and a video has been created highlighting the process, reactions from residents and the performance itself. This video will be included with the Council's new Climate Literacy Training for staff launching early in 2023.	Achieved	Short term	Green
5.1.5	Work with Lewisham's Young Mayor to support and grow existing action by young people in the borough on climate change. Work to ensure the views of young people are integrated within the Council's approach to action on climate change.	Housing Regeneration and Public Realm - Climate Resilience Team	The Young Mayor's Team has participated in the Borough of Culture Climate Home commission. The Climate Resilience and Young Mayor's team have worked closely on Lewisham's Schools Network, and the Climate Resilience team also presented at a Young Mayor's session in June 2022. The Young Mayor's team participated in a recent Lewisham Pupils Climate Network event in July 2022.	Achieved	2020/21	Green
5.1.6	Undertake a survey to inform the Council's understanding of residents' attitudes to climate change, priorities for action and further develop the Council's lobbying of Government and others.	Housing Regeneration and Public Realm - Inclusive Regeneration	The Council's Resident Survey in Autumn 2021 asked respondents to identify the organisation with most responsibility for climate change. Most people (77%) gave the view that everyone shares responsibility for tackling climate change. The next highest was central government (16%). Other responses included: Local Government (2%); Private Sector (2%); Individuals (2%) and the London Mayor (1%). Although not a formal survey the Lewisham Speaks Artist of Change programme collected a huge amount of anecdotal evidence from across the borough on residents' attitudes and priorities on climate change.	Achieved	2020/21	Green
5.2.1	Complete grant agreements under the Lewisham Community Energy Fund and publicise delivery showcasing good practice and finding opportunities to share learning.	Housing Regeneration and Public Realm - Climate Resilience Team	£100k of grant agreements were completed in 2021. Delivered projects include a holistic assessment of how to make St Winnifred's School carbon neutral, LED lighting, solar and other projects on community buildings and schools.	Achieved	2020/21	Green
5.2.2	Work with community partners to develop further funding opportunities to support local community energy projects.	Housing Regeneration and Public Realm - Climate Resilience Team	The May 2022 Lewisham Labour Manifesto included a commitment to 'Work with community energy groups to help people insulate their homes with targeted grants aimed to reduce energy usage and bills'. Plans for a further round of Lewisham's Community Energy Fund are being developed to support delivery of this.	Ongoing	Short term	Red
5.3.1	Establish a Lewisham Climate Commitment supported by local partner organisations to agree a common purpose, promote joint working and improve transparency on carbon emissions across key organisations in the borough.	Housing Regeneration and Public Realm - Climate Resilience Team	In June 2021 a new Climate Subgroup of the Lewisham Deal was set up involving the Council, Goldsmiths University of London, Lewisham Hospital, Phoenix Community Housing, Lewisham College and Lewisham Homes. The group has agreed Terms of Reference aimed at promoting joint working across these key organisations in the borough with a focus on supporting jobs and skills in retrofit, transparency in carbon reporting and opportunities for joint working on engagement and communications. The Lewisham Deal Subgroup has now been integrated into new structures being set up for the Local Strategic Partnership.	Ongoing	2020/21	Red
5.3.2	Work with London Councils, the GLA and other London boroughs to develop and present a coherent case for change at national level to deliver the investment, legislation, fiscal incentives and leadership needed to respond to the climate crisis.	Housing Regeneration and Public Realm - Climate Resilience Team	The lobbying points within Lewisham's Climate Emergency Action Plan were provided to London Councils and informed a set of London lobbying points that have been used in the build up to COP26 and other policy work. The London Council's London Environment Directors Network is coordinating cross borough working and Lewisham has participated in a number of thematic groups identifying pan London good practice and solutions to delivering on Climate Emergency ambitions. The Council's Cabinet Lead attends London Councils' TEC, LGA and UK100 events to share knowledge and lobby central government for increases in funding and the levers needed by local government to tackle the climate crisis. Lewisham has responded to a number of consultations since the declaration of a climate emergency either as a single authority or leading the response through the Association of Local Energy Officers for London this includes the Net Zero Review evidence gathering, DEFRA's consultation on environmental targets, Heat Network Zoning consultation, the Future Homes Standard consultation, Fuel Poverty Strategy consultation as well as writing to Ministers and others on a range of key national and regional affecting the borough and the ambition to be net zero by 2030.	Achieved	2020/21	Green
5.3.3	Work with local education and skills providers and with local businesses to develop the supply chain for building retrofit and carbon reduction technologies. Support local people to gain the accredited skills needed to gain employment and ensure Lewisham's economy benefits from growth in the carbon reduction sector. Integrate energy, carbon and climate activity into Lewisham's Inclusion and Growth Strategy.	Housing Regeneration and Public Realm - Climate Resilience Team	The tri-borough LSBU Green Skills Hub, in which Lewisham Council is a strategic partner, was launched in May 2022 bringing together a network of local colleges including Lewisham College, and a network of local employers in green sectors, to work together to develop the local green skills offer. Lewisham Council along with neighbouring Southwark and Lambeth, have appointed a shared strategy officer post focusing on retrofit skills development, and since November 2021, the officer has worked with the tri-borough Councils collectively and individually, between the skills, local economy, sustainability, and assets/housing teams, and with the recently launched tri borough LSBU Green Skills Hub. The work has built up a shared understanding of the green skills needs and projections, and has resulted in a series of project proposals to develop local retrofit and low carbon heat and energy skills, grow the local economy in these sectors, create opportunities for residents, and ensure the Boroughs can meet their Climate Action Plan targets in these areas. Successes from the Tri Borough work include: <ul style="list-style-type: none"> •£.75M DfE Strategic Development Fund funding until March 2023 (outcomes to 2025) for facilities, capacity building and curriculum development in Low carbon heat and energy, and retrofit sectors across Central London Sub-region •£500K ESF-funded 'Retrofit Revolution Project' at LSBU for 250 unemployed South London residents Current projects include contractor Support with PAS.2030 and Trustmark registration, green skills showcase resources for schools and career advisors, retrofit-focused shared apprenticeship scheme, a Retrofit insulation Centre of Excellence, and a set of bespoke retrofit and low carbon energy Social Value Asks for inclusion across decarbonization contracts.	Achieved	Short term	Green
5.3.4	Work in partnership with neighbouring boroughs on flooding, and green linkages to address sub regional environmental issues.	Housing Regeneration and Public Realm - Climate Resilience Team	As Lead Local Flood Authority Lewisham works closely with neighbouring boroughs, the Environment Agency, Thames Water and London Councils on sub regional flooding and environmental issues.	Achieved	Short term	Green

5.3.5	Create a public sector network in the borough to share good practice and support on carbon reduction.	Housing Regeneration and Public Realm - Climate Resilience Team	In June 2021 a new Climate Subgroup of the Lewisham Deal was set up involving the Council, Goldsmiths University of London, Lewisham Hospital, Phoenix Community Housing, Lewisham College and Lewisham Homes. The group has agreed Terms of Reference aimed at promoting joint working across these key organisations in the borough with a focus on supporting jobs and skills in retrofit, transparency in carbon reporting and opportunities for joint working on engagement and communications. The Lewisham Deal Subgroup will integrate into new structures being set up for the Local Strategic Partnership.	Achieved	2020/21	Green
5.3.6	Publish a practical guide to action on carbon reduction for local businesses.	Housing Regeneration and Public Realm - Climate Resilience Team	The business guide to action on climate change was delayed by the pandemic which affected the way all businesses were operating. The guide has been drafted and is going through a design process and is expected to be published by the end of Q4 2022/23.	Achieved	2020/21	Green
5.4.1	Create a lessons-learned log from day one of delivering the Action Plan to capture new ideas, contacts, improvements and changes that are needed to try and keep Lewisham engaged and active at the forefront of action on the Climate Emergency.	Housing Regeneration and Public Realm - Climate Resilience Team	This has been done.	Achieved	2020/21	Green
5.4.2	Commit to an annual public review of our Climate Emergency work to be held on or near the anniversary of the original declaration of a Climate Emergency (27 February 2019)	Housing Regeneration and Public Realm - Climate Resilience Team	Updates on Lewisham's Climate Emergency Action Plan have been reviewed by Mayor and Cabinet each March since publication. Climate Emergency has also been an agenda item at the Sustainable Development Select Committee, and in November 2021 an in-depth session by Overview and Scrutiny Committee. The Housing Retrofit Task & Finish scrutiny group was established in 2021 and reported its recommendations in March 2022.	Achieved	2020/21	Green
5.5.1	Lewisham's Mayor to write to London Councils and the GLA to set out the Council's full set of lobbying points and seek wider support.	Housing Regeneration and Public Realm - Climate Resilience Team	The lobbying points within Lewisham's Climate Emergency Action Plan were provided to London Councils and informed a set of London lobbying points that have been used in the build up to COP26 and other policy work. Lewisham has responded to a number of consultations since the declaration of a climate emergency either as a single authority or leading the response through the Association of Local Energy Officers for London this includes the Net Zero Review evidence gathering, DEFRA's consultation on environmental targets, Heat Network Zoning consultation, the Future Homes Standard consultation, Fuel Poverty Strategy consultation as well as writing to Ministers and others on a range of key national and regional affecting the borough and the ambition to be net zero by 2030.	Achieved	2020/21	Green
5.5.2	Officers to support a pan-London approach to lobbying through London Councils, the Association of Local Energy Officers in London and through other fora.	Housing Regeneration and Public Realm - Climate Resilience Team	The London Council's London Environment Directors Network is coordinating cross borough working and Lewisham has participated in a number of thematic groups identifying pan London good practice and solutions to delivering on Climate Emergency ambitions. In 2022 this included lobbying for additional powers on 20mph, for the Government to adopt WHO AQ targets, for additional support on energy bills for community sector organisations, for additional requirements on energy efficiency for home-owners refurbishing part of a property. The Council also submitted a response to the Government's call for evidence on the Net Zero Carbon review in October 2022 calling, among other things for more clarity on the role of local authorities in delivering net zero and a need for realism and long term thinking about how current grant funding regimes work.	Achieved	2020/21	Green
5.5.3	Seek to agree a joint statement with local MPs, Climate Action Lewisham, Extinction Rebellion and other local lobbying environmental groups to the UK Prime Minister setting out our call for action and seeking to influence 26th UN Climate Change Conference of the Parties (COP26).	Housing Regeneration and Public Realm - Climate Resilience Team	The lobbying points within Lewisham's Climate Emergency Action Plan were provided to London Councils and informed a set of London lobbying points that have been used in the build up to COP26 and other policy work.	Achieved	2020/21	Green



Sustainable Development Select Committee

Update on Lewisham Transport Strategy and Local Implementation Plan

Date: 24 April 2023

Key decision: No

Class: Part 1

Ward(s) affected: All

Contributors: Seamus Adams, Head of Commercial Developments and Operations & Highways and Strategic Transport

Outline and recommendations

The purpose of this report is to update the Sustainable Development Select Committee on the progress being made on improving sustainable transport provision in the borough and the targets set by the Council through several documents including the Lewisham Transport Strategy and Local Implementation Plan (LIP) 2019-2041 and the Lewisham Cycle Strategy 2017, including the December 2019 Cycling Update Report.

In the context of the Council's ongoing sustainability strategies and the disrupted financial position following the pandemic, the Committee is asked to consider the Council's approach to its delivery of sustainable and active travel policies across the borough.

The Sustainable Development Select committee is asked:

- To note and comment on the contents of this report.

Timeline of engagement and decision-making

- Mayor and Cabinet, 6 February 2019 – Draft Transport Strategy and Local Implementation Plan 2019-2041
- Sustainable Development Select Committee, 4 December 2019 – Cycling Update
- Sustainable Development Select Committee, 17 February 2022 – Update on Lewisham Transport Strategy and Local Implementation Plan

1. Summary

- 1.1. This report presents an overview of the current targets set out in the Council's Transport Strategy and Local Implementation Plan (LIP) 2019-2041 and Cycling Strategy, and provides the status of each target for information to the Sustainable Development Select Committee.

2. Recommendations

- 2.1. To note and comment on the contents of this report.

3. Policy Context

- 3.1. In conjunction with the ongoing LIP delivery mechanism, the Council is reviewing performance against agreed targets as set out in the Transport Strategy and Cycling Strategy. This information will then be used when formulating future strategies and delivery programmes and will assist in identifying where future investments are required to bring targets back on track where they are currently off target.
- 3.2. The Council recognises the importance of its role not only in delivering a programme of investment that supports the vision of the Mayor at a wider level, but is also tailored to the needs of residents. Delivering active and sustainable transport measures also delivers against other Council policies, including the:
 - Corporate Strategy 2022 – 2026 – This sets out what the Council plans to deliver for residents between 2022-2026. One of the leading priorities is making Lewisham 'cleaner and greener', where the Council has committed to enable more active travel and aim to reduce reliance on cars.
 - Strategy and Local Implementation Plan (LIP) 2019 – 2041 – The objectives of the Council's Transport Strategy is for travel by sustainable modes to be the most pleasant, reliable and attractive option for those travelling to, from and within Lewisham; for Lewisham's streets to be safe, secure and accessible to all; Lewisham's streets to be healthy, clean and green with less motor traffic; and for Lewisham's transport network to support new development whilst providing for existing demand.
 - Climate Emergency Action Plan (2020) – This sets out the Council's ambition for Lewisham to be a carbon net-zero borough by 2030. More than 25% of the

Is this report easy to understand?

Please give us feedback so we can improve.

Go to <https://lewisham.gov.uk/contact-us/send-us-feedback-on-our-reports>

borough's carbon emissions derive from transport. Within the action plan, one of the overarching aims is to decarbonise the transport network, reduce congestion and encourage sustainable modes of transport.

- Air Quality Action Plan 2022-2027 – This outlines the Council's five-year strategy to improve air quality in the borough. This includes objectives for cleaner air around schools and for cleaner transport policies, such as encouraging more trips to be made by walking, cycling and public transport to reduce car use.

- 3.3. It should be noted that between 2020-2022 the Council was not operating in 'business as usual' circumstances due to the pandemic. Amongst many adverse effects, funding and resources for sustainable transport measures was significantly disrupted, which has impacted on the implementation of transport programmes and projects.
- 3.4. The key source of funding is the borough's LIP allocation from Transport for London. Since March 2020, LIP funding has been disrupted as a result of the pandemic which has meant that funding has been uncertain and we have experienced a delay in confirmation of funding. LIP funding has seen a steady decline; in 2020/21 a total of £3.2m was allocated with £2.7m allocated in 2021/22 and £1.3m in 2022/23 an overall reduction during this period of more than 60%. The recent allocation for 2023/24 has seen a slight reduction in the allocation for safer corridors and neighbourhoods however an increase in cycle training and cycle parking has provided an overall slight increase in funding totalling £1.6m. These reduced funding levels are not expected to change for the foreseeable future.

4. Background

- 4.1. The Council is committed to making Lewisham a greener place to live, work and visit by improving access to more forms of sustainable transport and reducing emissions related to vehicle usage.
- 4.2. The Transport Strategy and Local Implementation Plan (LIP) sets out the Council's plans for the future of transport in Lewisham, with details of aspirations for the borough up to 2041, to contribute towards achieving the ambitious vision of the London Mayor's Transport Strategy (MTS).
- 4.3. **Funding position**
- 4.3.1. In March 2020, LIP funding was disrupted as a result of the pandemic and the financial implications that it had on Transport for London's (TfL) funding streams. Between 2020-2022, the Council received a series of short-term funding settlements by TfL which has hampered the Council's ability to plan long-term and deliver larger schemes.
- 4.3.2. As mentioned above LIP funding has seen a steady decline, in 2020/21 a total of £3.2m was allocated with £2.7m allocated in 2021/22 and £1.3m in 2022/23.
- 4.3.3. The funding allocation for 2022/23 for P1-3 was £100k for Safer Corridors and Neighbourhoods and £20k for bus priority.
- 4.3.4. In September 2022, it was announced that a longer-term funding settlement had been agreed between the Department for Transport (DfT) and TfL. Lewisham Council was allocated £1.1m for 2022/23 for P4-12 to be used to fund programmes across the themes as indicated in Table 1 below:

Is this report easy to understand?

Please give us feedback so we can improve.

Go to <https://lewisham.gov.uk/contact-us/send-us-feedback-on-our-reports>

LIP funding allocation	P1-3 (£k)	P4-12 (£k)	Total (£k)
Safer Corridors and Neighbourhoods	157	901	1,058
Bus priority – Progress Hail & Ride	20	115	135
Cycleways Network Development	0	20	20
Cycle training	0	56	56
Cycle parking	0	34	34
Sub-total	177	1,126	1,303

Table 1 – LIP Funding Allocation 2022/23

4.3.5 Whilst the funding announced in September 2022 was welcome, it largely had to be spent by March 2023 so provided little time to plan and deliver any major projects. The focus for 2022/23 was to begin to develop a series of ‘shovel-ready’ schemes and initiatives to improve the public realm and help support active and sustainable travel across the borough, further details of which can be found within Appendix C. The limited funding available was also prioritised to support the development of updated strategies including for EV charging and a refresh of the 2017 Cycling Strategy which is to be combined with walking and other forms of active travel to provide an integrated mobility strategy.

4.3.6 The funding allocation by TfL for 2023/24 has remained similar to that of 2022/23 totals with the exception of cycle training and cycle parking, which has seen an increase. Overall funding however remains significantly below pre-pandemic levels. The allocations for 2023/24 across the different themes are shown in Table 2 below.

LIP funding allocation	2023/24 allocation (£k)	Carry forward from 22/23 (£k)	Total (£k)
Safer Corridors and Neighbourhoods	1,048	0	1,048
Bus priority – Progress Hail & Ride	134	118.5	253
Cycle training	233	0	233
Cycle parking	106	0	106
Sub-total	1,521	118.5	1,639.5

Table 2 – LIP Funding Allocation 2023/24

4.3.6 Further details of the proposed LIP programme 2023/24, subject to approval by Mayor and Cabinet, is provided in Appendix C.

4.3.7 The Council’s ability to deliver against the LIP and Cycling Strategy targets in future schemes for the benefit of our borough and residents is dependent upon a longer term funding agreement being reached between Government and TfL that is able to provide funding more in line with that prior to the pandemic.

Is this report easy to understand?

Please give us feedback so we can improve.

Go to <https://lewisham.gov.uk/contact-us/send-us-feedback-on-our-reports>

4.3.8 The lack of certainty on long term funding has meant we have to be more flexible about how we identify and utilise available funding to support active and sustainable travel. This is one reason why we have established an “Active Travel Fund” to pull together all existing funding streams for highway and transport initiatives to ensure that opportunities are maximised for including active and sustainable transport measures within existing programmes. The Active Travel Fund does not necessarily represent “new” money but it ensures that existing funding is utilised in a more intelligent and holistic way to support improved outcomes.

4.3.9 Another key factor affecting programme delivery is level of staff resourcing. The revenue budget cuts agreed in 2020/21 significantly reduced the resource capacity across Strategic Transport. This inevitably has made it more challenging and adversely affected progress in some areas. To counter this, a service redesign is planned in 2023/24 to realign and increase capacity in areas critical to delivery of the LIP programme objectives.

4.4. Overview of existing targets

4.4.1. Whilst there are other strategies that the LIP is aligned to the primary strategies that the schemes seeks to achieve targets on are the LIP and Cycling Strategies. Further details of each are provided below.

4.4.2. As indicated above, progression towards achieving these targets has been significantly hampered by the reductions in long-term funding and resourcing. It is also worth recognising that the targets were set in a pre-pandemic world and do not take account of changes since the pandemic such as an increase in more home working and lower levels of public transport patronage. Despite this, there is an encouraging slight improvement in the status of LIP targets when compared to last year’s position.

4.5. Local Implementation Plan

4.5.1. The below table provides a brief overview of the status of the LIP targets. A full list of the targets is in Appendix A.

On target	Off target
5	8

4.5.2.

4.5.3. The Local Implementation Plan contains a vast array of targets including emissions, active travel and public transport. The emissions targets are on track to meet the 2041 target. In relation to WHO guidelines, PM2.5 emissions are the only emissions currently above the guidelines, the others are currently compliant. The active travel infrastructure, both cycling and walking, is being achieved in certain areas with significant progress being made on delivering school streets in the past two years. However the Strategic Cycle Network (SCN) is in need of expansion to meet the target of 19% of Lewisham population to live within 400m of a SCN. Public transport trips, journey times and speeds targets have not been achieved to date and we will continue to work with TfL to identify where the greatest delays are being experienced and where interventions would be of most benefit.

4.5.4. Overall whilst there have been numerous challenges as a result of the funding as disussed above, there has been an improvement in targets achieved in comparrison to last year and the Council’s focus on studies and designs has schemes at stages where they can now be implemented.

4.5.5. Examples of current initiatives which will support meeting LIP targets include:

- Public realm improvements in Deptford High Street, Montpelier Vale and Coulgate Street

- Collision reduction corridor schemes including on Baring Road and Downham Way and also at several high collision junction locations around the borough
- School safety measures including, continuing the award winning programme of school streets, school travel planning and safer routes to school programme
- Speed compliance measures including, speed monitoring, vehicle activated signs and traffic calming
- Traffic management measures to reduce congestion and improve safety
- Cycle infrastructure improvements such as for quietways, cycle contraflows and segregated cycle routes
- Cycle training across the borough for children and adults
- Continuing rollout of the Cycle Hanger Programme with about 75 new hangers installed in 2022/23
- Borough wide studies including towards future Healthy Neighbourhoods, HGV restrictions and Mobility Hubs
- Strategy review for sustainable mobility and development of integrated cycling and walking implementation plan
- Refresh of the the EV charging strategy and development of borough wide implementation plan, which includes 40 additional EV chargers installed in 2022/23
- Sustainable Streets Programme to reduce the number of car journeys by making it safer and more attractive for people to walk, cycle or use public transport as part of an innovative and sustainable parking management solution
- Introduction of a monitored e-bike trial across the borough.

4.5.6 Further details of the proposed LIP measures and initiatives can be found in Appendix C.

4.6. **Cycling Strategy**

4.6.1. The below table provides a brief overview of the status of the Cycling Strategy targets. More detail is provided in Appendix B.

On target	Off target
1	3

4.6.2. The targets set out in the Lewisham Cycle Strategy 2017 have also been affected by the pandemic and level of resources available. Further work is required working in collaboration with TfL to ensure they are brought back on target.

4.6.3. We will conduct a review of the cycle collision incidents in Lewisham specifically so that we are able to monitor the number of cyclists killed or seriously injured in road traffic accidents in Lewisham compared to the 2017-2019 baseline. We will conduct a review of the high cycle collision locations in Lewisham specifically and develop a programme of work to reduce the number of cycling collisions. Positively however, cycle parking across the Borough has been significantly increased over the last year with about 75 new installations and further progression is being made to increase the number of cycle hangars across the Borough. The Council has also been developing the dockless bike scheme with a number of locations now installed and a full borough-wide trial will begin in 2023/24.

Is this report easy to understand?

Please give us feedback so we can improve.

Go to <https://lewisham.gov.uk/contact-us/send-us-feedback-on-our-reports>

4.6.4. Some of the key cycling measures that are being developed include the following;

- Lewisham Town Centre Revitalisation – This Levelling Up Funding will be used to make the high street greener, safer and better connected, with new access routes through the town centre, improved cycle infrastructure, more pedestrian crossings and new lighting and CCTV. These improvements will ensure the high street, market, library, shopping centre and key transport hubs are better linked.
- A21 Spine road - One of the key routes identified in the Cycling Strategy is the A21 Lewisham Spine project and it is pledged that we will 'seek TfL's support to improve the Lewisham Spine along the A21 and linking it to the wider cycle network'. As part of the Streetspace for London programme TfL introduced some temporary changes on the A21 between Catford and Lewisham. Consideration is now being given to the future of this scheme and officers will continue to work with TfL in relation to this and also cycling provision along the whole Lewisham Spine corridor. A21 improvements in Catford due to the Catford Regeneration scheme and realignment of the A205 will provide significant improvements for cycling and provide a strengthened case for further investment in the A21 over the next few years.
- Deptford Church Street between the A2 Deptford Broadway/Deptford Bridge and the A200 Creek Road - segregated cycle lane
- Lee Road between Blackheath to Bell Green
- Link between New Cross Gate and Crofton Park where it will join the existing LCN 22 that runs between Catford and Peckham
- Quietway between Folkestone Park to Fordham Park and New Cross (joining to C10)
- The Waterlink Way is an established part of the National Cycle Network, connecting several parks and green spaces in South East London however the Waterlink Way Bridge restricts safety and ease of access along this route, this is to be further developed.
- Further progression of contra flow implementation programme
- Further cycle routes linking green spaces.

4.7 Conclusion

- 4.7.1 In the context of the Council's current targets set out in the LIP and Cycling strategy, 40% of those targets have been achieved and are on target, whilst 60% of the targets have not been achieved and are currently off target. Whilst there is still much work to be done, this represents an improvement on last year's position.
- 4.7.2 The areas that require increased focus in future are to expand the Strategic Cycle Network including segregated routes where possible and introducing further complementary cycling measures to link up our town centres, parks and transport hubs. In addition, we will continue the roll out of cycle hangers, EV chargers and car club bays across the borough and support a School Street for every school where feasible and wanted by teachers and families.
- 4.7.3 It is also recommended to concentrate on continuing works and initiatives to reach a target of households owning 12,000 fewer cars in 2041.
- 4.7.4 The uncertainty relating to future funding continues to be a constraint on developing future programmes of work to deliver schemes that will contribute to achieving the

Is this report easy to understand?

Please give us feedback so we can improve.

Go to <https://lewisham.gov.uk/contact-us/send-us-feedback-on-our-reports>

targets set in various strategies. Work is being done to identify alternative funding opportunities, such as S106 funding and other funding sources that the Council may be able to submit bids for. In addition, officers will continue to explore opportunities where there is potential for greater alignment of existing funding such as the Active Travel Fund initiative.

5. Financial implications

- 5.1. The current funding position has been explained in section 4.3 above. There have been issues surrounding the TfL funding required to implement this strategy and plan, which have been highlighted above. As stated in the paragraph above, work is being undertaken to identify other possible available sources of funding.
- 5.2. The Principal Road Maintenance programme provided £189k in funding for 2022/23 for resurfacing. It is anticipated that a similar process will be run in 2023/24, however, there is currently no indication as to how much funding will be received.
- 5.3. The funding for 'Bridge Assessment and Strengthening' is considered on a pan London basis by the 'London Bridge Engineering Group (LoBEG)' and the allocations for 2023/24 have not yet been notified.
- 5.4. As TfL grant funding has continued to be awarded well below the expected levels, the service will have to reprioritise its work plan to contain expenditure within available resources.

6. Legal implications

- 6.1. There are no direct legal implications associated with considering this report. Any proposals or projects arising from this paper will be detailed in future reports and will include the relevant legal implications.

7. Equalities implications

- 7.1. There are no direct equalities implications associated with considering this report. An Equalities Analysis will be carried out for some of the projects listed in this report to identify any evidence or views that suggest that different equality of other protected groups could be adversely and/or disproportionately impacted. An Equalities Analysis has been undertaken for the Transport Strateg which did not identify any impacts.

8. Climate change and environmental implications

- 8.1. The projects listed in this report will make a positive impact on the borough and contribute towards the Council's target for Lewisham to be carbon net-zero by 2030. Through reducing unnecessary car use and encouraging more walking, cycling and use of public transport,

9. Crime and disorder implications

- 9.1. There are no direct crime and disorder implications associated with this report.

10. Health and wellbeing implications

- 10.1. There are no direct health and wellbeing implications associated with this report.
- 10.2. Improving access to walking and cycling infrastructure in the borough may encourage more residents to make active travel choices, i

Is this report easy to understand?

Please give us feedback so we can improve.

Go to <https://lewisham.gov.uk/contact-us/send-us-feedback-on-our-reports>

11. Report author and contact

Comments for and on behalf of the Director of Finance: Shola Ojo, Principal Accountant

Comments on behalf of the Director of Law: Melanie Dawson, Principal Lawyer

12. Appendices

Appendix A – Overview of Transport Strategy and Local Implementation Plan Targets and Status

Appendix B – Overview of Lewisham Cycle Strategy Targets and Status

Appendix C – LIP schemes overview 2022/23 & proposed 2023/24 programme

Is this report easy to understand?

Please give us feedback so we can improve.

Go to <https://lewisham.gov.uk/contact-us/send-us-feedback-on-our-reports>

This page is intentionally left blank

Appendix A – Overview of LIP Targets

Target	Status of Target	Detailed status	Reference
<p>Londoners’ trips to be on foot, by cycle or by public transport</p> <p>It will aim to create a step-change in public transport and active travel provision, particularly to the south east through pursuing longer-term initiatives. Target of 72% average daily trips to be walking, cycling and public transport mode share by 2021 and 81% by 2041.</p>	Off target	<p>The latest TfL figures indicate that active and sustainable travel mode share has been generally fluctuating between 63-69%. Although public transport mode shares declined during the pandemic, this was compensated by an increase in the active travel mode share, meaning that the net impact on walking, cycling and public transport mode share was relatively small.</p> <p>As public transport modes shares have increased in recent quarters, the active travel mode shares have declined slightly, resulting in a value of 66% in 2022/23 between April – September (the latest data available), only two percentage points below the 2019/2020 average.</p>	Travel in London – TfL (2022)
<p>London’s streets will be healthy and more Londoners will travel actively</p> <p>70% of London residents doing at least 20 minutes of active travel a day by 2041.</p>	Off target	<p>The latest data available (April-September 2022) indicates that the proportion of Londoners travelling actively was 38.8%. A main contributory factor to lower achievement of the 20-minute daily target may be a result of more people working from home.</p>	Travel in London – TfL (2022)

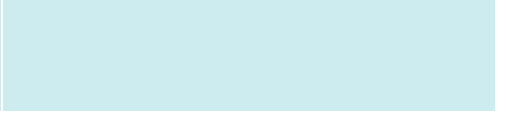
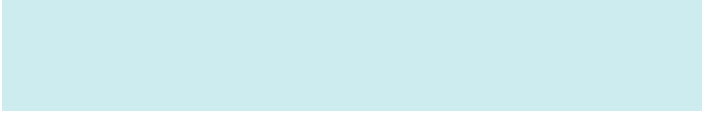
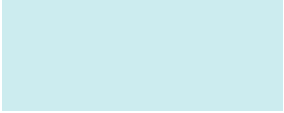
<p>London’s streets will be healthy and more Londoners will travel actively</p> <p>2021 target of 19% of Lewisham population to live within 400m of a Strategic Cycle Network. 2041 target of 71%.</p>	<p>Off target</p>	<p>The target represents a 2.6% increase a year assuming a linear increase in the population, therefore a target of 21.6% for 2022. 2022 data shows that 12% of residents live within 400m of a strategic cycle network in Lewisham.</p>	<p>TfL LIP3 MTS outcomes borough data pack – Dec 2022</p>
<p>London’s streets will be safe and secure</p> <p>Deaths and serious injuries from all road collisions to be eliminated from our streets. Target of no more than 26 KSIs by 2030 and 0 by 2041.</p>	<p>Off target</p>	<p>Lewisham has the third lowest number of KSIs of inner London boroughs in 2021 (64 compared to an average of 77), however this is an increase from 52% in 2017.</p> <p>There is anecdotal evidence of an increase in traffic volumes on minor roads away from main routes. This may lead to increased danger to vulnerable road users, particularly through residential areas. We are addressing this by driving essential motorised journeys onto our major roads, and away from residential streets and schools. We are undertaking a borough wide environmental weight restriction study which will identify how best to do so. At the same time, enabling more safe sustainable travel.</p> <p>Effective measures to keep traffic to more appropriate routes can be found with LTNs and school streets.</p>	<p>Lewisham Collision Data Review (2017-2021).</p>

		In 2022/23 we have introduced an additional 15 school streets and made permanent the Rolt Street pedestrian and cycle zone and made a decision to make the modal filters on Glenbow Road, Silverdale and Bishopsthorpe Road permanent.	
<p>London's streets will be used more efficiently and have less traffic on them</p> <p>To reduce the volume of traffic in London by 15% and to reduce the number of freight trips in the central London morning peak by 10% by 2026.</p>	Off target	<p>The ultra-low emission zone (ULEZ) was expanded to the south circular in October 2021 and is planned to be expanded to all of London in August 2023.</p> <p>Vehicles will need to meet the new, stricter exhaust emission standards or pay £12.50 to travel within the zone.</p>	ULEZ expansion 2023
<p>Reduce car ownership</p> <p>Reduce the total cars owned and car ownership per household. A quarter of a million fewer cars owned in London. Target of 75,100 owned cars by 2021 and 67,800 by 2041.</p>	Off target	<p>Car ownership data from 2021 indicates that 76,459 vehicles are registered in the borough. This represents a reduction from 2020 figures and 49% of households do not own a car.</p> <p>The Council has recently launched the borough-wide Sustainable Streets programme which seeks to implement sustainable travel measures and parking permits, which can contribute to uptake in active and sustainable travel modes and a reduction in car ownership.</p>	<p>TfL LIP3 MTS outcomes borough data pack – Dec 2022</p> <p>Healthy Streets scorecard 2022 results</p>
<p>Reduce CO₂ emissions</p>	On target	<p>The most recent data is from 2020 which indicates that CO₂ emissions produced by road transport measured at 118,419 tonnes. It is</p>	London Energy and Greenhouse Gas Inventory

Lewisham will have reduced its CO ₂ emissions produced by road transport to 132,000 tonnes by 2021 and 34,800 tonnes by 2041.		important to note that this is data collected during the pandemic when there were restrictions in place and therefore statistics should be cited with caution. We expect to see an increase in emissions data from 2021 and 2022.	(LEGGI) - London Datastore (2020)
Reduce NO_x emissions Lewisham will have reduced its NO _x emissions produced by road transport to 200 tonnes by 2021 and to 30 tonnes by 2041.	On target	The mean roadside NO ₂ concentration across the network for 2021 was 26.0 µg/m ³ and no locations of relevant exposure exceed the EU limits of 40 µg/m ³ . This contributes to the continual downward trend in NO ₂ concentrations of 38% between 2015 and 2021.	London Borough of Lewisham Air Quality Annual Status Report for 2021
Reduce PM₁₀ emissions Lewisham will have reduced its PM ₁₀ emissions produced by road transport to 44 tonnes by 2021 and to 24 tonnes by 2041.	On target	In 2021, all three monitoring sites measured annual mean PM ₁₀ concentrations well below the AQO of 40 µg/m ³ , supporting the overall downward trend since 2015.	London Borough of Lewisham Air Quality Annual Status Report for 2021
Reduce PM_{2.5} emissions Lewisham will have reduced its PM _{2.5} emissions produced by road transport to 21 tonnes by 2021 and to 12 tonnes by 2041.	On target	PM _{2.5} concentrations monitored in 2021 are all below the annual AQO value of 25 µg/m ³ . Lewisham Council supports the Mayor of London's commitment to meet the World Health Organisation (WHO) guidelines for PM _{2.5} which are more ambitious than the goal in the new national Clean Air Strategy. Unlike other pollutants, a large percentage of PM _{2.5} in London comes from regional and non-UK sources, however the main sources of PM _{2.5}	London Borough of Lewisham Air Quality Annual Status Report for 2021

		that do originate locally are from tyre and break wear, construction and wood burning.	
<p>The public transport will meet the needs of a growing population</p> <p>London Borough of Lewisham More public trips by public transport. Target of trips per day by using public transport of 255 by 2021 and 331 daily trips by 2041.</p>	Off target	<p>The pandemic had a significant impact on the number of trips made by public transport as more people were making shorter local trips and there was a perceived risk of catching Coronavirus on public transport.</p> <p>Since restrictions have been lifted, there has been an increase in the number of journeys made by public transport, however this is still below 2019/20 averages.</p>	TfL LIP3 MTS outcomes borough data pack – Dec 2022
<p>Public transport will be safe, affordable and accessible to all</p> <p>By 2041, Lewisham will reduce the difference between total public transport network and total step-free public transport network journey time from 7 minutes to 3 minutes.</p>	On target	The observed time difference in 2022 was 4 minutes.	TfL LIP3 MTS outcomes borough data pack – Dec 2022
<p>Journeys by public transport will be pleasant, fast and reliable</p> <p>Average bus speeds in Lewisham will improve by 9.3-</p>	Off target	Average bus speeds have remained consistent in Lewisham, with 2021/22 bus speeds at an average of 9.2mph so not achieving the 2021 target.	TfL LIP3 MTS outcomes borough data pack – Dec 2022

9.6mph in 2021 to 9.7-10.6mph
by 2041.



Appendix B – Overview of Cycle Strategy Targets

Target	Status of Target	Detailed status	Reference
<p>Double the number of cycling journeys</p> <p>The target seeks a 100% increase in journeys in six years compared to the Mayor of London’s aim to increase cycle journeys in London by 150% over 10 years to 2026.</p>	Off target	<p>The latest data from 2019/20 indicates that cycling makes up 3% of journeys in Lewisham. The target by the Mayor of London is very ambitious which is recognised in the Cycling Strategy.</p> <p>As well as cycle training and schemes to improve local streets for cycling, the Council is also working with dockless bike providers to improve access to e-bikes for residents and visitors.</p> <p>A map of all the proposed marked bays across the borough to be developed for May 2023 and we will be implementing marked bays across wards in a phased approach. The first phase will be implemented in 2023 and remainder 2024. Approximately 750 dockless bikes in total to be provided from Lime, Tier and Human Forest.</p>	<p>TfL LIP3 MTS outcomes borough data pack – Dec 2022</p>
<p>Increase the proportion of employed residents cycling to work to 10%</p> <p>This is an increase of 150% in a 10 year period. With the population of Lewisham</p>	Off target	<p>The 2021 census data indicates that 3.6% of employed residents cycle to work. It should be noted that around 45% of residents reported that they mainly work from home.</p>	<p>Methods used to travel to work – Census 2021 data</p>

<p>increasing dramatically at the same time, the number of people cycling to work will have to increase by about 300%.</p>			
<p>Halve the casualty rates of cyclists</p> <p>This target relates cycle collisions to the volume of cycling journeys. This target is to effectively halve the number of cycling injury collisions compared to the number of cycle journeys.</p>	Off target	<p>2021 data indicates a 33% increase in the number of cyclists killed or seriously injured in road traffic accidents in London compared to the 2017-2019 baseline.</p> <p>We will conduct a review of the cycle collision incidents in Lewisham specifically so that we are able to monitor the number of cyclists killed or seriously injured in road traffic accidents in Lewisham compared to the 2017-2019 baseline. We will conduct a review of the high cycle collision locations in Lewisham specifically and develop a programme of work to reduce the number of cycling collisions.</p>	Travel in London - TfL
<p>Cycle parking</p> <p>More convenient and secure residential cycle parking, such as cycle hangars in existing residential areas. These help make it convenient to use and access a cycle, which increases the frequency of cycling. New developments are required to provide appropriate facilities.</p>	On target	<p>As of 2022 there are 834 secure cycle parking spaces (through Cyclehoop hangars), an increase of 222 since 2021.</p> <p>The next tranche of cycle hangars is expected to be installed in June, which will deliver an additional 162 secure cycle parking spaces.</p>	Search - Cyclehoop

This page is intentionally left blank

Appendix C – Overview of Schemes

Scheme/Programme	Brief overview	2022/23	2023/24
Public Realm schemes			
Montpelier Vale	Improvements to Montpelier Vale, a street with shops which currently provides part of a one way gyratory in the Blackheath Conservation Area and near a World Heritage Site, which will benefit from pedestrianisation	Development of concept designs	Preliminary and detailed design improvements
Deptford High Street	Urban design improvements to Deptford High Street between the junctions of Edward Street and the A2. Deptford Broadway is a heavily used street with shops which will improve from pedestrianisation	Public consultation and development of concept designs	Preliminary and detailed design of urban design improvements
Coulgate Street	Contribution to Thames Water funded scheme pedestrianizing this location which will incorporate Sustainable Urban Drainage Solutions	Surveys and detailed design of an urban design improvement to pedestrianise Coulgate Street and introduce SuDS	Implementation (note that the build is Thames Water funded) and additional work on detailed design due to presence of significant amount of statutory undertakers apparatus/utilities including medium pressure gas main
Corridor schemes			
Baring Road	Collision reduction scheme. This design will provide all information necessary to implement a scheme that will include traffic calming measures on Baring Road between Chinbrook Road and A205 Westthorne Avenue	Preliminary design for collision reduction scheme	Detailed design for collision reduction scheme and build of minor measures

Scheme/Programme	Brief overview	2022/23	2023/24
Downham Way	As above, a collision reduction scheme to include traffic calming measures on Downham Way between Northover and Bromley Road which was identified	Preliminary design for collision reduction scheme	Detailed design for collision reduction scheme
School safety measures			
School Streets	To implement measures to provide safer environments for children, reduce road danger, and create cleaner environments in the proximity of schools	Developed school street/school zone concept designs for Bonus Pastor/Downderry, Fairlawn and Torridon Schools	Design and install next three School Streets at Bonus Pastor/Downderry, Fairlawn, and Torridon
School travel planning	Allows schools to improve their pupils' health and social development and reduce congestion	Focus on school streets	Continued promotion of safe, healthy and sustainable travel to and from schools to improve pupils' health and social development and reduce traffic congestion
Safer Routes to School	Improve safety for children crossing roads near schools in Lewisham	Focus on school streets	Programme of pedestrian crossing and other improvements to provide safer routes to school to encourage walking and cycling.
Traffic management schemes			
20mph compliance	Improved road safety of roads in Lewisham to improve speed compliance	Installation of numerous VAS signs	Identification of roads with low compliance to 20mph speed limit and implementation of traffic calming measures
Junction improvements at high collision junctions:	Improved road safety of roads in Lewisham	Development of designs at Evelyn Street and Grinstead Road and implementation at Algernon Road and Ladywell Road	Design and build at high collision junctions

Scheme/Programme	Brief overview	2022/23	2023/24
Borough-wide weight restrictions	Implementation and improvement of existing environmental weight limits to manage the impact/remove HGVs from residential streets	Study undertaken to identify specified areas and/or routes that require weight restrictions	Design of a number of areas that have been identified as needing weight restrictions to be implemented
Sydenham Road and Mayow Road junction	Junction assessment and improvement at the Sydenham Road and Mayow Road junction to reduce speeding and increase safety. This location was identified as one that experiences excess speed and road danger, including collisions, requiring improved safety for all modes of users	Preliminary design for collision reduction scheme.	Detailed design for collision reduction scheme, to provide all information necessary to implement the road safety scheme
Brockley Road zebra crossing	Improved safety at pedestrian crossing as well as improve bus network	Delayed as a result of delay by TfL providing signal design	Improvements to the existing crossing on Brockley Road.
Hither Green Lane, Courthill Road and Torridon Road junction	Improve safety of roads in Lewisham	Funding not provided in 2022/23	Design and build of junctions highlighted
Lee Terrace, Lee High Road and Lee Road	Improved traffic flow and road safety at congested high collision junctions	Funding not provided in 2022/23	Design of junctions highlighted
Modernisation at Honor Oak Park/Stondon Park	Improved road safety for road users in Lewisham	Funding not provided in 2022/23	Feasibility and design to address unsafe left hand turn from Honor Oak Park into Stondon Park.

Scheme/Programme	Brief overview	2022/23	2023/24
Healthy Neighbourhood schemes			
LTN enhancements	Design and implement enhancements for Lewisham and Lee Green LTN as recommended in the LTN report (January 2022)	Measures including cycle hangars, street trees, EVCPs, School Streets, Sydenham and Grove Park LTNs camera installations introduced as recommended.	-Continued monitoring
Healthy Neighbourhood Feasibility Study	Study to identify next potential suitable location for Healthy Neighbourhood interventions	Study carried out to determine approach to further interventions as well as priority interventions.	Design and consultation for implementation of the next HN in Lewisham
Cycle permeability schemes			
Cycle training	Free cycle training lessons for school children and adults to improve confidence and ability on the road	Continued training – For 2022/23 not including March 2023 the following training has taken place; 1324 children. 47 Adults. Provided 4x group adult rides	Continued training – estimated 3,900 children and 150 adults as well as group rides
Quietways Permeability improvements Lines and signs refresh Route safety improvements	Improvements to quietways providing safer and more pleasant routes off of more major corridors	Line and sign refresh at Landmans Way and Safety review at Blackheath	Design and implementation of improvements to existing quietways including at Canal Approach as identified in the Deptford Parks Liveable Neighbourhood programme
Contraflow implementation programme	Improved cycle network within Lewisham	One-way to two-way cycling conversions feasibility study for Amersham Vale, Ashby Road, Clifton Rise, St Swithnus Road, Beecroft Road and Marnock Road	Implementation of contraflows

Scheme/Programme	Brief overview	2022/23	2023/24
Cycle hangars programme	Increasing the provision of secure cycle parking in the borough. Currently the demand greatly outstrips the funding available, so hangars are being installed where there is greatest demand	Funding has been used to install 75 hangars	Funding will be used to install an estimated additional 22 cycle hangars with locations in the south of the borough will be prioritised where there is currently lowest coverage. It should be noted that cycle hangars will be installed as part of the sustainable streets programme (mentioned below) also details of which are still being consulted on. Further funding is being sought to increase this number.
Deptford Church Street	Improved cycle network within Lewisham	Surveys and preliminary design	Detailed design for a segregated cycle lane along Deptford Church Street between the A2 Deptford Broadway/Deptford Bridge and the A200 Creek Road to tie in with the development of the Thames Tideway Tunnel.
Cycle Development Network – A new cycle route link between New Cross Gate and Crofton Park where it will join the existing LCN 22 that runs between Catford and Peckham.	The cycle route has been identified from Transport for London’s Strategic Cycling Analysis (SCA), which identified the origins and destinations that would provide the best new cycle route connections	Feasibility Study	Development of design
Linking green spaces	Improvements to quietways providing safer and more pleasant routes off of more major corridors	Funding reallocated due to programme constraints and reflected in following years funding	Study to develop links for sustainable modes between green spaces.

Scheme/Programme	Brief overview	2022/23	2023/24
Routes linking town centres	Improved cycle links between major destinations	Funding reallocated due to programme constraints and reflected in following years funding	Preliminary design of links for sustainable modes on Lee Road
Waterlink Way Bridge	The Waterlink Way is an established part of the National Cycle Network, connecting several parks and green spaces, however the bridge restricts safety and ease of access along this route	Funding not provided in 2022/23 due to programme constraints however is included for 2023/24	Review detailed design and tender documents and identify additional funding contributions
Bus priority schemes			
R336 Hail and Ride conversion	Improved bus network in Lewisham	Delayed as a result in delay to TfL public consultation	Detailed design to convert hail stops to permanent bus stops on route 336
R273 Hail and Ride conversion	Improved bus network in Lewisham	Delayed as a result in delay to TfL public consultation	Detailed design to convert hail stops to permanent stops on route 273
Brockley Road bus shelter	New bus shelter to be installed	New bus shelter installed	N/A
Other LIP schemes			
Borough-wide monitoring	Obtain data for the borough that will provide an improved understanding of traffic flows and environmental effects and assess built schemes within the borough. This will provide confidence in schemes and complement behaviour change.	Monitoring of Lee Green LTN	Measures to obtain speed data as well as baseline data for School Streets that have been/are to be installed including Bonus Pastor/Downderry, Fairlawn, and Torridon

Scheme/Programme	Brief overview	2022/23	2023/24
Road safety education	Education is key to the promotion and realisation of road safety. Our primary focus has been on providing road safety education in schools.	Funding reallocated due to programme constraints	Continue to support Vision Zero in Lewisham to reduce casualties on a data-led approach.
Mobility hubs	Introduction of a mobility hub to bring together shared transport with public transport and active travel in a space designed to improve public realm for all.	Feasibility study carried out	Develop top priority mobility hub in the borough
Sustainable Integrated Mobility Strategy	London is challenged with a rapidly growing population which requires an integrated approach to mobility that supports sustainable growth.	Started in 2023/24	Combine, update and integrate a number of strategies to provide a current single integrated strategy
Sydenham Park Footbridge	Improvements to pedestrian and cycle bridge	Bridge deck replaced and steps refurbished; completion of feasibility study into improved pedestrian and cycle accessibility	Progress preliminary design for hybrid stepped ramp option
Other (not LIP) sustainable transport schemes			
Sustainable Streets	The Sustainable Streets programme aims to improve streets for residents and reduce car dependency whilst providing sustainable transport solutions. A more pleasant environment for everyone will be created with the introduction of more street trees and better sight lines.	Phase 1 consultations in the Catford/Crofton Park and Deptford areas was undertaken between January-March	Report due to be presented to Mayor and Cabinet in July about recommendations for implementation. If approved, implementation will take place after the summer. Phase 2 consultations due to commence

Scheme/Programme	Brief overview	2022/23	2023/24
Dockless bikes	Improving the provision of dockless e-bikes across the borough and the management of parking. Currently Lime bikes have appeared in parts of the borough and complaints have been received about obstructive parking.	Borough-wide mapping has been commissioned for marked bays on the carriageway and on the footway where there is sufficient space. An MoU is being developed with Lime, Tier and Human Forest	Dockless bike trial will be launched Marked bays will be introduced in phases, starting with wards in the north of the borough. TMOs will be made for marked bays to be introduced on the footway and carriageway.
Electric vehicle charging strategy and implementation of charging points	Research and development of an EV strategy including review of that carried out in Oxford to date for determination with regard to types of chargers provided (i.e. cable channels, lamp column etc.) and arrangements with suppliers. Increased availability of EV charging points.	40 EV chargers have been installed around the borough. EV Implementation Strategy 2023-2026 under development.	Additional EV chargers to be installed around the borough.
Staff Travel Plan	Staff Travel Plan to encourage active travel for commutes and work-related trips.	Staff Travel Plan launched. Officers in Transport, Regeneration, Waste Management and Facilities Management preparing plans for loss of Laurence House car park.	TfL to launch public consultation for Catford A205 realignment. If approved, works are expected to start from 2025 which will result in the loss of the car park at Laurence House. Zipcar trial to be launched in April, available for staff for work-related trips to discourage private car use.
Car Sharing	Working collaboratively with car share providers to increase roll out across the borough	Installation of several car club bays all provided by Zipcar.	More car club bays will be implemented through our Sustainable Streets programme and EV strategy. We are also starting a car club trial in the Laurence House car park for use by employees during the working

			day and for residents out of these hours.
Scheme/Programme	Brief overview	2022/23	2023/24
A21 Lewisham Spine	New cycleway for A21 Lewisham Spine (Deptford to Downham). A21 improvements in Catford due to the Catford Regeneration scheme and realignment of the A205 will provide significant improvements for cycling and provide a strengthened case for further investment in the A21 over the next few years.	Continue to work collaboratively with TfL including on outcome of draft Outcome Definition Report (ODR) for Lewisham Spine (Deptford to Downham). ODR was part funded by LBL.	Next steps to be developed.

This page is intentionally left blank



Sustainable Development Select Committee

Parks and Open Spaces Update

Date: 24 April 2023

Key decision: no.

Class: Part 1

Ward(s) affected: Not applicable

Contributor: Vince Buchanan (Head of Parks, Sport and Leisure)

Members are invited to receive a verbal update from officers on the implementation of the Parks and Open Spaces Strategy at the meeting on 24 April - alongside the annual monitoring update report for the strategy and a briefing on the latest developments regarding the playing pitch strategy.

This page is intentionally left blank

Annual Monitoring Report

(June 2022)

Parks and Open Space Strategy 2020-2025

Social Aims

Delivery plan measures and undertakings	Timescales/milestones	Progress between July 2021 – Jun 2022	RR
Greening Fund (GF) successfully delivers £360k of improvements by April 2021.	April 2021	The first round of the GF completed.	
Greening Fund successfully delivers £0.5m	May 2022	Greening Fund has delivered £290k and secured a further £401k from S106 sources to deliver Phase 2 of the programme	
Three completed rounds of the Greening Fund	May 2022	It is anticipated that there will be two rounds of the GF as the majority of available Funding has been allocated. The reduction from 3 to 2 rounds was a result of Covid.	
Successful delivery of the Greening Fund leading to its adoption post 2022	June 2022	Achieved	
Number successful applicants + 70	January 2025	2022 = 76 sites:- Achieved	
Greening Fund attracts £250k of additional match Funding	January 2025	2021 = £51,153 2022 = £82,211	
Greening Fund successfully delivers £1m	May 2025	The Greening Fund is forecast to deliver £743k and NCIL Funding that is allocated to parks £518k. It is anticipated that £1.26m of investment will be delivered by 2025	
Explore and, if feasible, provide umbrella PLI insurance for running events	March 2021	Done. Corporate Insurance will be extended to qualifying groups	
Develop a memorandum of understanding (MoU), for the functioning of Park User groups and a model constitution for new groups	March 2021	MoU completed and various constitution models are available and can be tailored to suit individual groups.	

Delivery plan measures and undertakings	Timescales/milestones	Progress between July 2021 – Jun 2022	RR
<p>Maintain updated information on the Lewisham website for all groups so contact details, web links and other information can be provided</p>	<p>Every 6 months</p>	<ul style="list-style-type: none"> • Work has been completed to update parks and nature reserves pages • Work is ongoing to improve the Nature Conservation website. This will include Lewisham’s Biodiversity Action Plan and other general information to encourage biodiversity/re-wilding • A review of Glendale local website has recommended changes to enhance the user experience and promote active parks. There’s an identified need to market the ‘offer’ better. More engaging information and better signposting. This will enable visitors to understand how to get involved promoting active lifestyles and positive engagement 	
<p>– To promote more public involvement and engagement with the formal user ‘friends’ groups, broadening their appeal and capacity:-</p> <p>Explore and, if feasible, facilitate training and/or advice sheets on topics such as: <i>“Effective methods of communication, consultation and social media use”</i> <i>“Promotion of the ‘Lewisham Way’ ethos of collaboration”</i></p>	<p>x1 training/seminar every year</p>	<ul style="list-style-type: none"> • Paediatric First Aid course offered to Friends of Group Representatives • Virtual Butterfly Identification Workshop delivered • Butterfly Identification Walk at Brockley & Ladywell Cemeteries, and Beckenham Place Park • x2 hedge laying training sessions 	

<p>Deliver investment to:</p> <ul style="list-style-type: none"> 1) Durham Hill 2) Southend Park 3) Forster Memorial Park 4) Riverview Walk 5) Folkestone Gardens 6) Home Park 7) Lewisham Park 8) Blythe Hill Fields 9) Riverdale Sculpture Park 10) Lewisham Way 11) Hatcham gardens 12) Ferranti Park 13) Friendly Gardens 14) Luxmore Gardens 15) Broadway Fields 16) Evelyn Green 17) Baxter's Fields 	<ul style="list-style-type: none"> 18) Ravensbourne Park Gardens 19) Edith Nesbitt Gardens 20) Eckington Gardens 21) Margaret McMillan Park 22) Sayes Court Park 23) Lewisham War Memorial Gardens 24) The Common & Summerhouse Field 25) Deptford Memorial Gardens 26) Westbourne Drive Enclosure 27) Grove Park Library Gardens 28) Ladywell Green/Slagrove Place 29) Wickham Gardens 30) Beachborough Gardens 31) Beaulieu Avenue Green 32) Kirkdale Green 33) St Norbert Green 34) Turnham Road green 35) Culverley Green 	<p>Annual review monitoring report</p> <p>x5 March 2022 x15 March 2023 x25 March 2025 x35 March 2027</p>	<ul style="list-style-type: none"> x14 Sites invested into in 2021 x 6 Sites invested into in 2022 <ul style="list-style-type: none"> 1) Durham Hill: x67 'Treescapes' Funded trees planted. Also, Tiny Forest project planted 600 whips 3) Forster Memorial Park: 87 shrubs/trees planted in the sensory garden & a new trim trail installed 6) Home Park: x39 'Treescapes' Funded trees planted 9) Riverdale Sculpture Park: x1 new bin and x1 new bench installed 13) Friendly Gardens: x2 new benches installed 22) Sayes Court Park: x2 new benches; x2 animal proof bins; x3 new signs & a new playground facility <p>8 additional sites on the list have also received investment in this period:</p> <ul style="list-style-type: none"> 1) Cornmill gardens: new boardwalks and platform 2) Mayow park: Benches; bins; cricket pitch 3) Downham Woodland Walk: play equipment 4) Grove Park Nature Reserve: benches 5) Knapmill Allotments: 1 bat, 1 bird box and 1 hedgehog house 6) Blackhorse Road Allotments: 3 planters, 8 bird boxes, 8 insect hotels 7) Blythe Hill: 1 x Drinking Water Fountain installation 8) Mountsfield Park: 153 shrubs and trees planted as part of the orchard project
---	---	---	---

Delivery plan measures and undertakings	Timescales/milestones	Progress between July 2021 – Jun 2022	RR
Target and spend the £54k grant from the Office Communities and Local Government in Lewisham's parks and open spaces that are outside the identified growth area where there is less Section 106 availability	March 2021	This money has been allocated for the delivery of GF2	
Next Open Space Assessment to validate the upgrade in the status of all the listed sites above	March 2025	TBC	
To support Lewisham's Playing Pitch Strategy (June 2019) and its Action plan where Funds are available and do not conflict with the varying requirements to provide a broad range of activity and appeal for our park users	Annual review monitoring report	Discussions around funding opportunities for the installation of a 3G pitch at Whitefoot Lane and smaller sided 3G's across the borough continue. The Council are also supporting the development of the Lewisham Football Partnership which will act as consulting body with the wider football community in the borough.	
Number of new facilities and external grants achieved (Playing Pitch Strategy)	Annual review monitoring report	Installation of 18 pieces of outdoor gym equipment (£56,436) at:- <ul style="list-style-type: none"> • Durham Hill • Mountsfield Park • Forster Memorial Park 	
To achieve an endorsed and adopted strategy (Parks Events)	March 2023	Blackheath Events Policy adopted 15 th June 2022	
Ensure that all new interpretative initiatives and appropriate infrastructure promote the linking of parks and open spaces across the borough.	Annual review monitoring report	'Go jauntly' app is live for promotion on notice boards to link River Pool Linear Park and Ladywell Fields Park with:	
Provide interpretation and way marking to link River Pool Linear Park and Ladywell Fields Park with: <ol style="list-style-type: none"> 1) Manor House Gardens 2) Manor Park 3) Mountsfield Park 4) Lewisham Park 	All by March 2025	<ol style="list-style-type: none"> 1) Manor House Gardens 2) Manor Park 3) Mountsfield Park 4) Lewisham Park <p>The new Glendale Conservation Officer will be promoting and marketing the linkage project on park notice boards and social media</p>	

Delivery plan measures and undertakings	Timescales/milestones	Progress between July 2021 – Jun 2022	RR
<p>The Greening Fund will finance improvements to parks. This will include new bike locking points, new water drinking fountains, new signs and way-finding posts, new benches & bins. The implementation of these improvements will improve and refresh parks and attract greater use.</p>	<p>Annual review monitoring report</p>	<p>GF 1 delivered:</p> <ul style="list-style-type: none"> 144 litter and dog waste bins 64 bird or bat nest boxes 44 park benches or seats 23 disabled user-friendly picnic tables 16 biodiversity or sustainability enhancements 14 disabled-friendly raised bed planters 13 items of outdoor gym equipment 13 children’s play area improvements 12 trees 10 interpretative signage / noticeboard installations 3 entrance enhancements 3 drinking water fountains 2 water-saving schemes – water butts/water storage tanks 2 compost toilets <p>GF2 has secured a further £453k for enhancements to parks themed around “Access,” “Young People and Play” and “ Biodiversity & Sustainability”</p>	
<p>Deliver 52 Natures Gym sessions engaging 550 volunteers per year</p>	<p>Annual review monitoring report</p>	<ul style="list-style-type: none"> • 55 Natures Gym Sessions engaging 494 volunteers • 40 Rivers & People Sessions engaging 232 volunteers • 149 Beckenham Place Park events engaging 1418 volunteers 	
<p>To facilitate and support 10 forest schools</p>		<p>There are 12 forest schools being facilitated at 8 sites</p>	
<p>Nature Conservation Team to deliver x10 sessions per year (300 children)</p>		<p>13 sessions were delivered engaging 237 children and 98 adults</p>	

Delivery plan measures and undertakings	Timescales/milestones	Progress between July 2021 – Jun 2022	RR
Lead the 3 Rivers Clean Up initiative in June/July each year		This year was the first 3 Rivers Clean Up (3RCU) since the Covid lockdowns. The 3RCU ran from 11th June – 10th July 2022 with over 20 events engaging 400 people. This is fully reported in Lewisham Biodiversity Outputs quarterly reports	
Install new outdoor gym equipment	x4 March 2022	x3 units @ Sydenham Wells Pk and x7 units @ Manor House gardens	
Install new outdoor gym equipment	x8 March 2025	x18 pieces of outdoor gym equipment have been installed as part of the Sevenfields PCN - Oakview Family Practice collaboration at Mountsfield Park, Durham Hill and Forster Memorial Park	
Install new table tennis tables	x2 March 2022	x2 Forster Memorial Park; Luxmore Gardens	
Install new table tennis tables	x4 March 2025	x1 Friendly Gardens	
Maintain and update the Lewisham website so that the information on parks remains current Monitor and maintain the Natures Gym and Rivers and People web sites	Annual review monitoring report	The Parks and Nature Reserves pages on the council website were updated and a new page added to provide information on Buckthorne Road Nature Reserve. Natures Gym and Rivers and People websites are regularly maintained and updated. There were 35 posts on these two websites generating 7026 visits.	
Increase the number of licenced boot camps from 25	30 by March 2022 35 by March 2025	There are now 30 boot camps operating in the borough.	
Increase the number of community events facilitated in parks from 694	714 by March 2022 734 by March 2025	There have been 492 community events in parks. This figure has been effected by the Covid epidemic and the target may need to be re-profiled.	

Delivery plan measures and undertakings	Timescales/milestones	Progress between July 2021 – Jun 2022	RR
Where major park projects take place, monitor the number and outcome of any young people consulted	Annual review monitoring report	<p>Local school pupils consulted on the park playground design concept for the Sayes Court.</p> <p>Local schools pupils consulted on the playground design concept for Hatcham Gardens Playground improvement.</p> <p>Special Needs (SEN) consulted of the playground design concept for the Talbot Place playground development in Blackheath.</p>	
<p>Where major park playground projects take place:</p> <ul style="list-style-type: none"> • monitor the number and outcome of consultation with disabled stakeholders and the application of inclusive play principles in their design, layout and equipment choices • develop a play strategy that balances inclusive play for children of all abilities and age ranges • ensure that the design brief builds on best practice in terms of intergenerational design 	<p>Annual review monitoring report</p> <p>By March 2023</p>	<p>Meeting with Portage Team and Parents of children with Special Educational Needs (SEN) to look at designs for Folkestone Gardens, Sayes Court Park, Beckenham Place Park and Folkstone Gardens Play Improvement Projects.</p> <p>The SEN team have worked with the parks team collaboratively on the designs and the aspiration to include elements that support intergenerational facilities have been considered along with other unapparent needs and observations.</p>	
Seek to maximise the static presence in major parks through the process of in-sourcing the parks Grounds Maintenance Service	November 2021	Insourcing of the GM contract was formally deferred until November 2023	
Provide customer care training to all new and transferring staff so they can perform frontline duties as the face of the Park Service	November 2022	Please see above	
Develop a reporting process/protocol to train staff to capture essential information on ASB occurrence & patterns	November 2022	<p>Glendale have refined their Incident Report Form, updated Jan 22 and now accessible on hand held devices used by 8 Parks Services staff. Parks Services Security Patrol produce a monthly reports logging the number of all incidents according to category e.g. Vandalism/Noise etc. Joint enforcement and monitoring has occurred at a number of sites such as at Folkstone Gardens with rough sleepers and to deal with residential fly tipping at Firhill road allotments.</p>	

Delivery plan measures and undertakings	Timescales/milestones	Progress between July 2021 – Jun 2022	RR
Develop a database of antisocial behaviour patterns and deliver joint enforcement events where feasible and appropriate	November 2022 Annual review monitoring report	As above.	
Address all antisocial casework issues within the 10 day timescale	Annual review monitoring report	All casework is being dealt within the corporate timescales set. Please note that there is not currently any identified increase in this type of casework	
Record any metrics/improvements in perception of safety	Annual review monitoring report	Nothing to report	

Economic Aims

Delivery plan measures and undertakings	Timescales/milestones	Progress	RR
Number of planning applications refused from 2019-2025.	Annual review monitoring report	10	
Amount in hectares and/or number of parks and open spaces lost to development.	No net loss by 2025	0	
Number and monetary value of park enhancements that derive from S106 agreements or Community Infrastructure Levy receipts.	Annual review monitoring report	£1,385,151	
£1m of investment from Development Control sources.	March 2025	£1,385,151	
£300k external investment target for non-Development Control sources.	March 2025	£1,127,932	
15 Green Flag Awards	July 2022	2022 = 16 Green Flags Awards achieved for Parks Awards (Lewisham total including the Horniman = 17) and 6 Community Green Flag Awards Lewisham became 1 st in the 2021/22 Good Parks for London assessment.	

Delivery plan measures and undertakings	Timescales/milestones	Progress	RR
17 Green Flag Awards	July 2025	As above.	
Present a briefing paper on Corporate Natural Capital Accounting and potential business case to the Sustainable Development Select Committee to seek political support and steer so that policy makers are better appraised of the collective value of decisions that relate to the natural environment	March 2023	The Council was part of a research project that looked at Natural Capital Accounting for rivers in Lewisham with a case study on the River Quaggy. The report has not yet been finalised.	
<p>The Healthy neighbourhood programme – is part of Lewisham’s transport strategy, it will create streets that encourage more people to walk and cycle. An element of the program is to make areas greener and to reduce air pollution. We are delivering the first tranche of Healthy Neighbourhoods in the Lewisham Lee Green, East Sydenham, Telegraph Hill and Bellingham areas.</p> <p>The Cycleways program is designed to encourage and promote safe cycling routes not dominated by vehicles. A key element of this is promoting our green spaces to provide a well-designed network of neighbourhoods. An important element of this is more street planting and sensitive grounds maintenance throughout the routes.</p>	<p>x3 Healthy neighbourhoods by April 2021 x2 Healthy neighbourhoods per FY thereafter 2 Cycleways by April 2021 4 Cycleways by April 2022</p>	<p>The majority of the Healthy Neighbourhoods Funding that supported this initiative was withdrawn by TfL at the start of the pandemic and has not subsequently been reinstated. We are actively looking at alternative sources of Funding so that we can continue the delivery of the Healthy Neighbourhood programme, but this Funding is likely to be less than was previously available. How and when the programme will be delivered in future will be subject to the Funding identified.</p> <p>As part of the Borough’s emergency transport response to the pandemic LBL delivered the Lewisham and Lee Green low traffic neighbourhood (LTN) as a temporary scheme. Following an assessment of how that scheme is performing against the scheme objectives and a public consultation the decision has been taken to retain the scheme and work is being progressed to deliver some complementary measures. Please see the decision report for further details.</p> <p>The Cycleways programmes has also been affected by the removal of potential Funding streams.</p>	

Delivery plan measures and undertakings	Timescales/milestones	Progress	RR
		Construction of Cycleway 4 on Evelyn Street is due to be completed in Autumn 2022. Improvements to the River Pool/Ravensbourne confluence foot bridge are subject to Funding. We are currently planning an update of our Cycle Strategy which will set out how we will improve conditions for cycling in the borough in the future	
Provide interpretation and way marking to link River Pool Linear Park and Ladywell Fields Park with: <ol style="list-style-type: none"> 1) Manor House Gardens 2) Manor Park 3) Mountsfield Park 4) Lewisham Park 	All by March 2025	Glendale have worked up 'Go jaunty' walks for promotion on notice boards to link River Pool Linear Park and Ladywell Fields. Testing the technology and routes is ongoing but Glendale plan to market the resource via notice boards in the autumn of 2022	
Play an active role in all appropriate forums & partnerships, such as, the Lewisham Biodiversity Partnership, Ravensbourne Catchment Improvement Group, Environment Agency- Flood Alleviation consultations, Thames Tideway, All London Green Grid, London Parks and Open Spaces benchmarking group, Allotment Officers Association, and the London Tree Officers forum.	Annual review monitoring report	The team continues to provide a presence and support all of these networks and more (e.g. Association of Local Government Ecologists ALGE, London Borough Biodiversity Forum LBBF)	

Environmental Aims

Delivery plan measures and undertakings	Timescales/milestones	Progress	RR
Update and review all web based information	Complete overhaul by 2021,	<ul style="list-style-type: none"> • Work has been completed to updated parks and nature reserves pages • Work is ongoing to improve the Nature Conservation website. This will include Lewisham's Biodiversity Action Plan and other general information to encourage biodiversity/re-wilding 	

Delivery plan measures and undertakings	Timescales/milestones	Progress	RR
Explore with the web team some interactive search element or map that the public can access to illustrate park features and facilities, such as: -toilets; -cafes; -sports (field, tennis, table tennis, bowls, rugby, cricket, kite-ing, frisby); -horticultural features e.g. trees and bedding; - play provision including water play; - relaxation; - walking for health; - events; - linkages; formal and historic elements, memorials and monuments	Annual review monitoring report	The delivery of this aspiration has not progressed as anticipated. This is due to Covid and other factors stretching the corporate resources and support required to build any new web based platform.	
To install H ₂ O drinking water fountains	3 per year, 15 by 2025	3 completed 2020-21 1 completed 2021-22 (Cornmill Gardens)	
Install signs on all newly installed bins and on noticeboards to encourage and promote home recycling	Annual review monitoring report	Consultation has occurred with bin manufacturers to explore the possibility of incorporating appropriate messaging on the bins to be procured as part of the GF2.	
Monitor amount of green waste disposed of offsite and reduce quantity every year	Annual review monitoring report	The use of a shredder and shredded material as part of the horticultural shrub process is scheduled to be trialled. 186 tonnes was removed from June 21- March 22 10 tonnes composted	
Monitor the number of new planting schemes that deliver an integrated approach to fertiliser, weed control and watering by using drought tolerant plants, recycled mulches and that minimise the need for all chemical applications	Annual review monitoring report	New planting scheme to replace annual bedding at Laurence House and Civic Suite	
Monitor the amount of mulch imported from suppliers and reduce quantity every year	Annual review monitoring report	No bulk bags or ornamental mulch has been imported to sites this period	
Actively work with tree contractors to co-ordinate the use of chipped bark for local parks and open spaces when contractors are working in the vicinity	Annual review monitoring report	All bark is delivered to Forster Park and 30 van loads 30m ³ have been applied to park shrub beds, approximately 18 tons	
Re: Integrated Weed Control Policy (IWCP):- Target specific locations within key parks where alternative methods would have the greatest benefit and monitor effectiveness and cost.	Interim report by May 2023 Final report by May 2025	The IWCP has been adopted and operationalised in parks	
Measure the number of distinct biodiversity projects Measure the number of volunteers	Annual review monitoring report	The Lewisham Biodiversity Partnership (including the Nature Conservation Team) ran 614 events engaging 3,759 people in 2021-22.	

Delivery plan measures and undertakings	Timescales/milestones	Progress	RR
		Members of the partnership installed 2 bat boxes, 33 bird boxes, 11 loggeries and conducted 214 surveys (e.g. bird, butterfly, plant)	
Measure the area/features managed with electric machinery, and monitor the effectiveness and cost.	Interim report by May 2023 Final report by May 2025	<p>2020-21 electric machinery logged:</p> <ul style="list-style-type: none"> x1 buggy; x11 strimmers; x7 hedge cutters; x7 backpack blowers; x2 chainsaws; x2 pole saws x2 long arm hedgecutters x2 handheld blowers x4 brushcutters x1 zero turn mower x1 stand on mower <p>2021-22 electric machinery logged</p> <ul style="list-style-type: none"> x4 backpack blowers x4 brushcutters 	
Monitor the number of ice cream concessions and the installation of electric points	Annual review monitoring report	Current concessions – are at Deptford/Blackheath/Hilly Fields/Mayow Implementation of this action has been delayed due to the uncertainty about the future of the current grounds maintenance contract and issue around return on investment . All ice cream concessions in parks are not permitted to idle. Quotes have been received for electric installation and the prices are dependent on location but range £500 -1,500 + VAT.	
Deptford Parks Liveable Neighbourhood (DPLN) – new greening areas on Rolt Street, Scawen Road and Woodpecker Road following community engagement	April 2021	Work to deliver a scheme on Rolt Street is underway. Scawen Road was delivered as part of the Council’s Covid 19 emergency transport response and consideration is currently being given	

Delivery plan measures and undertakings	Timescales/milestones	Progress	RR
		to transferring this from an experimental scheme to a permanent one. Woodpecker Walk will have some resurfacing works, these are due to be completed by the end of August. Please see: Have Your Say Today – Deptford Parks Proposals – Commonplace	
Record the number of newly planted trees and tree losses. Achieve a greater than 2:1 ratio. Record the establishment of 150 metres of hedgerow per year.	Annual review monitoring report	<u>Parks trees</u> 790 whips planted 174 standard trees <u>Street Trees</u> 294 standard street trees planted in partnership with Street Trees for Living <u>Green Scene tree planting v tree loss</u> 468 planted v 79 losses (<6 :1 ratio) <u>Hedgerow</u> 57 linear meters @ Brookmill, Ladywell, Horniman Triangle and River Pool Linear Park	
Deliver over 40 river related volunteer sessions Lead the 3 Rivers Clean Up initiative in June/July each year Work in partnership with the Ravensbourne Catchment Improvement Group to identify projects that will enhance the biological quality of the rivers and river corridors	Annual review monitoring report	110 River related volunteer sessions have been hosted. Lewisham led a very successful return to the 3 Rivers Clean Up from 11th June – 10th July 2022 with over 20 events engaging 400 people.	
Deliver the £48k Street Trees for Schools project in partnership	Plant 100 trees by 2022	Completed, 100 trees were planted as part of this initiative	
Plant an additional 200 street trees per year in partnership	Annual review monitoring report	2021-22 294 trees planted	

This page is intentionally left blank



Project Briefing

Report title	Lewisham Playing Pitch Strategy Update
Author	Neville Graham – Sport and Leisure Service Manager
Date	Thursday 13 April 2023

1. Background

- 1.1. Lewisham Council commissioned 4global Consulting to prepare a Playing Pitch Strategy (PPS) in 2019, to provide the Council with a clear evidence base and set of recommendations for future outdoor sports facility development across the Borough.
- 1.2. A PPS is a strategic assessment that provides analysis of supply and demand for playing pitches (grass and artificial). The strategy and the evidence base upon which it is based is delivered using national guidance and facility insight from specific Governing Bodies of Sport.
- 1.3. The assessment focused on facilities used by the following sports as they were identified as the key sports which use facilities within Lewisham.
 - Football
 - Rugby Union
 - Cricket
 - Hockey
 - Netball
 - Tennis
 - Athletics

2. Recommendations and progress

- 2.1. Using the evidence base and analysis that has been developed as part of the PPS, a number of recommendations were provided to ensure the advancement of outdoor sport and activity provision across Lewisham.
- 2.2. At a strategic level, the following key recommendations (see the table below) have been identified for each of the sports, as well as for general sports provision. It is pertinent to note that soon after the adoption of the PPS, the Covid-19 pandemic took hold, largely impacting progress of the recommendations.
- 2.3. During this time, the Sports and Leisure Team and Parks and Open spaces have merged. This allows for better allocation of resources to work towards the recommendations within the Playing Pitch Strategy.

3. Next Steps

- 3.1. We are in the process of arranging a steering group meeting to ensure the PPS is still fit for purpose/relevant. This is in relation to changes in the way sport and physical activity are viewed post pandemic.

Recommendation	Actions /Progress	RAG
General Recommendations		
Work with well-run sports clubs to utilise the existing volunteer network across Lewisham and providing more autonomy for clubs, allowing those organisations that have adequate governance and financial stability to develop facilities and participation	<p>Ongoing</p> <p>Local Football Partnership launched in January 22 working towards providing unified voice for local clubs and their needs.</p> <p>A local Sports Club Forum is launching in April 23, allowing for regular stakeholder meetings to identify areas of support for local clubs.</p>	
Address the issue of poor ancillary and changing pavilion quality through the refurbishment and replacement of existing ancillary facilities, prioritising those on multi-pitch sites that are currently well used. Utilise the action plan to identify specific sites for development.	<p>Opportunities for external funding are being explored.</p> <p>Whitefoot Lane, Downham Playing Fields and Blackheath identified as key hubs for development</p>	
Enhance the drainage and maintenance of pitches that are currently operating over-capacity, to increase the pitch capacity to accommodate demand of current user clubs, especially on council-maintained pitches.	<p>Annual pitch maintenance regime planned to start in May at the end of the football season.</p> <p>Enrolled on Football Foundation's grass pitch improvements programme.</p>	
Work with clubs based at council owned sites, to establish long-term security use agreements, ensuring that clubs and participants have security of tenure and are able to grow and develop through grant funding wider investment.	<p>Working with a host of teams based at local facilities to ensure they have all they need to develop and grow</p> <p>Future coordination to be facilitated through the Lewisham Football Partnership.</p> <p>To be explored where appropriate clubs/organisations and facilities align</p>	
Work with educational establishments that provide playing pitches for use by community teams, through artificial provision, to secure formal community use of pitches and ancillary facilities through a Community Use Agreement. Where these community use agreements currently	<p>Currently working with CYP who manage bookings on educational sites to ensure community access is granted.</p> <p>Working with Contracts Manager for PFI schools to strengthen community organisation links.</p>	

exist, work with education establishments and users to ensure that requirements for community use are being enforced		
Football recommendations		
Protect all grass pitches for future football use and develop further capacity through improved maintenance and the development of 3G AGP provision, to ensure there is spare capacity for football over the lifetime of the strategy	Working with Football Foundation on their grass pitch improvements programme. Currently working to ensure football bookings are as widely spread across the borough as possible through the adoption of a facilities booking platform	
Ensure sites that have community use available also have security of tenure to protect the future provision of football, allowing clubs based on council sites to apply for grants and investments from various governing bodies.	Working to establish formal agreements for clubs based at local facilities	
Reconfigure a number of adult pitches to youth 11v11 to address the deficit of youth 11v11 provision and meet the growing demand for this pitch typology.	Pitches being/reconfigured at Downham Playing Fields, Bellingham Healthy Lifestyles Centre and The Bridge. Ongoing in relation to demand	
Lewisham currently has very little community available AGP provision within the study area. Identify at least 2 sites, one being in the north, to develop full sized 3G AGP provision, to meet the growing demand for this pitch type and meet the needs of local clubs and residents	Currently working with the Football Foundation to explore options for 3G pitch installation at Whitefoot Lane. Sites in the north of the borough under consideration	
Increase the level of maintenance at sites identified as being close to the poor rating, in order to mitigate the risk of pitches falling into disuse and lowering the carrying capacity of pitch provision in the borough	Pitch maintenance regime under constant review	
Identify MUGA/small-sided sites, particularly in the north of the borough, that could be converted or used for football via changing the surface to a 3G surface type. Develop a network of high-quality facilities that can be used for small-sided provision and meet the strategic objectives of LB Lewisham, The Football Foundation, the FA and Sport England. Where high quality floodlit provision is developed, determine an access control policy that can ensure these facilities remain sustainable while	Currently through to the second round of Football Foundation's Playzones programme which aims to develop small-sided game/muga facilities across London. Currently conducting desktop exercise to review demand. Lewisham Homes and other stakeholders engaged in identifying viable facilities	

having low barriers to entry. It should be noted that any resurfacing of sites should work alongside England Hockey so Hockey does not lose a supply of available pitches.			
Focus on the development of ancillary facilities located at Blackheath in terms of changing room provision. This should be in conjunction with the London Marathon Charitable Trust and the Football Foundation.	Review of funding opportunities for this site to be conducted in Summer 23.		
<u>Cricket recommendations</u>			
There are currently no 'good' rated pitches within the study area. Further investment and improved maintenance programmes are needed, especially on council owned pitches, to improve this quality rating of both the pitches and outfield. This is relevant for both the north and south sub areas, especially with the increased planned development to the north of the study area.	Working with Parks team to improve playing surfaces to the grass pitches in Mayow Park as well as working to maintain the synthetic pitches in Foster, Mountsfield, Deptford Park and Hilly Fields.		
Work with the key stakeholder to invest in non-turf pitch provision, to meet the growing demand for informal cricket and service clubs with training and matchplay facilities. Focus on sites in the north of the borough, where population increase is projected to be the most significant.	We are currently working with the ECB to install more non turf cricket pitches in the borough potential sites include Blackheath, Warren Avenue Playing Fields.		
Invest in ancillary facilities and the use of better security systems in order to decrease the amount of anti-social behaviour.	Working with Parks officers to identify areas of need		
<u>Rugby recommendations</u>			
Continue maintenance regimes for education sites as there is expected to be growth in the women's and girls' demand which is in line with the RFU projections			
Collaborate with other sports such as rugby league or Gaelic Football to facilitate the use of unused rugby sites within the borough.			

Hockey recommendations			
Ensure long term community use agreements are in place, especially at educational sites, to further develop hockey within the area. This will allow for allow for great club growth and facility development.	Working with St Dunstan's and Kings College to ensure facilities are accessible to community		
Safeguard sand based AGP provision for future use and not allow the conversion from sand based to 3G AGP's to occur unless offset with new development. England hockey should be consulted for any potential of resurfacing at a site. If resurfacing does occur at a site then the loss of a hockey pitch should be mitigated at a similar facility so the supply does not decrease.	No developments planned currently To be considered through relationships with current host venues.		
Netball recommendations			
Establish long term community use agreements with educational sites and netball clubs, as well as continued maintenance improvements to surfaces.	Working to establish formal agreements for clubs based at local facilities		
Tennis recommendations			
Utilise an excellent working relationship with the LTA, developed through previous capital investment projects, to invest in further local authority facilities, focussing on poor quality facilities that service the north of the borough	Phase 2 of the investment programme underway to upgrade the courts at Chinbrook Meadows, Ladywell Fields (Catford Bridge), Telegraph Hill and Hillyfields. This will see further investment in 4 more park sites		
Work in conjunction with the FA and Football Foundation when applying for new 3G surfaces and sites as Tennis courts can be added onto such applications and better serve a wider aspect of the community.	Not possible on current Working to establish formal agreements for clubs based at local facilities Tennis development programme due to space restrictions. To be considered for future renovations projects		
Athletics recommendations			
Protect the existing synthetic athletics facility at Ladywell Park and continue to work with the resident club to increase usage throughout peak and off-peak times.	Ongoing Working with resident athletics clubs to support growth.		

This page is intentionally left blank



Sustainable Development Select Committee

Select Committee Work Programme Report

Date: 24 April 2023

Key decision: no.

Class: Part 1

Ward(s) affected: Not applicable

Contributors: Timothy Andrew (Scrutiny Manager)

Outline and recommendations

To advise members of the completed work programme for 2022/23 and to propose draft themes for the Committee's work programme for 2023/24.

The Committee is asked to:

- note the completed work programme attached at appendix C.
- review the issues covered over the course of 2022/23.
- review the forward plan of key decisions at appendix D.
- consider priority themes for the 2023/24 work programme.

Timeline of decision-making

June 2022 – Draft Committee work programme agreed

July 2022 – Committee work programme agreed by Business Panel

September 2022; December 2022 and February 2023 – Committee work programme reviewed at formal meetings.

1. Summary

- 1.1. Each Select Committee is required to agree a work programme for submission to the Business Panel at the beginning of the municipal year. The last meeting of the Sustainable Development Select Committee in 2022/23 was postponed so members are being asked to put forward suggestions for the 2023/24 work programme at this stage for consideration and agreement at the meeting in June 2023.

2. Recommendations

- 2.1. The Committee is asked to:
 - note the completed work programme attached at appendix C.
 - review the issues covered over the course of 2022/23.
 - review the forward plan of key decisions at appendix D.
 - consider priority themes for the 2023/24 work programme.

3. The Work Programme

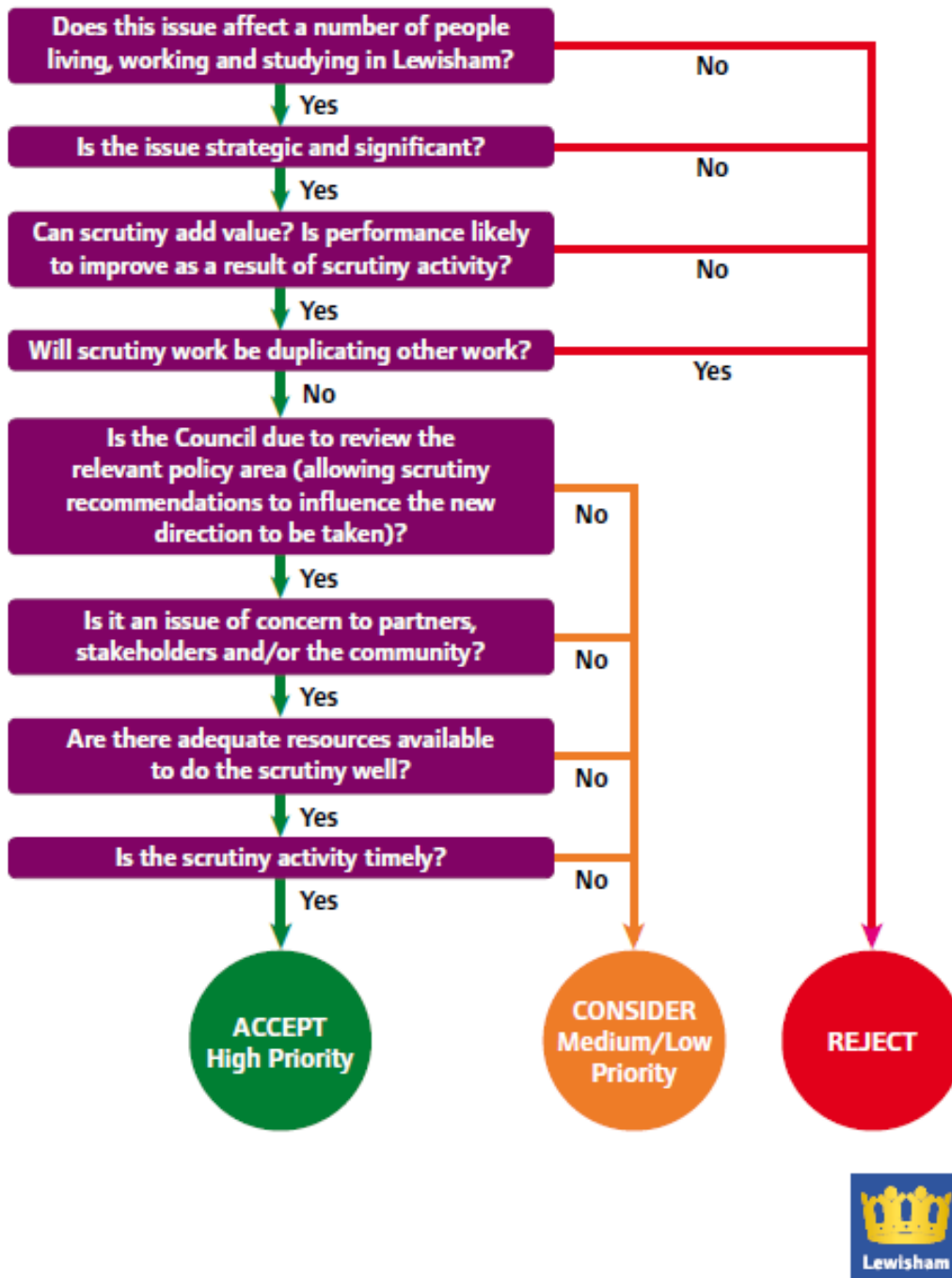
Issues covered over the course of 2022/23

- 3.1. The Sustainable Development Select Committee met four times in the municipal year 2022/23. The completed work programme is attached at Appendix C.
- 3.2. Key issues covered by the Committee this year have included air quality, the climate emergency, flood risk management and environmental crime enforcement.
- 3.3. The Committee has also allocated time to reviewing budget cuts proposals and the plans for sustainable parking and transport.

Timetable for setting the 2023/24 work programme

- 3.4. Five further committee meetings have been scheduled for the 2023/24 municipal year. A draft work programme will be put forward at the meeting in June, taking into account key issues and the Committee's previous work.
- 3.5. At this meeting, Members are asked to review the Committee's work over 2022/23 and consider suggestions/priority themes for 2023/24. Forthcoming key decisions are set out in appendix D.
- 3.6. Work programme suggestions should be considered against the Committee's terms of reference (see appendix A) and the prioritisation chart set out below, and be achievable in terms of the meeting time available.
- 3.7. The Committee should give consideration to issues of local importance and decisions due to be made by Mayor and Cabinet. Items within the work programme should be linked to the priorities set out in the Council's Corporate Strategy for 2022-2026:
 - Cleaner and Greener
 - A Strong Local Economy
 - Quality Housing
 - Children and Young People
 - Safer Communities
 - Open Lewisham
 - Health and Wellbeing

Scrutiny work programme – prioritisation process



4. Financial implications

- 4.1. There are no direct financial implications arising from the implementation of the recommendations in this report. Items on the Committee's work programme will have financial implications and these will need to be considered as part of the reports on those items.

5. Legal implications

- 5.1. In accordance with the Council's Constitution, all scrutiny select committees must devise and submit a work programme to the Business Panel at the start of each municipal year.

6. Equalities implications

- 6.1. Equality Act 2010 brought together all previous equality legislation in England, Scotland and Wales. The Act included a new public sector equality duty, replacing the separate duties relating to race, disability and gender equality. It covers the following nine protected characteristics: age, disability, gender reassignment, marriage and civil partnership, pregnancy and maternity, race, religion or belief, sex and sexual orientation.
- 6.2. The Council must, in the exercise of its functions, have due regard to the need to:
 - eliminate unlawful discrimination, harassment and victimisation and other conduct prohibited by the Act
 - advance equality of opportunity between people who share a protected characteristic and those who do not.
 - foster good relations between people who share a protected characteristic and those who do not.
- 6.3. There may be equalities implications arising from items on the work programme and all activities undertaken by the Select Committee will need to give due consideration to this.

7. Climate change and environmental implications

- 7.1. There are no direct climate change or environmental implications arising from the implementation of the recommendations in this report. However, in February 2019 Lewisham Council declared a Climate Emergency and proposed a target to make the borough carbon neutral by 2030. An action plan to achieve this target was subsequently agreed by Mayor and Cabinet (following pre-decision scrutiny by the Sustainable Development Select Committee)¹. The plan incorporates all areas of the Council's work. Items on the work programme may well have climate change and environmental implications and reports considered by the Committee should acknowledge this.

8. Crime and disorder implications

- 8.1. There are no direct crime and disorder implications arising from the implementation of the recommendations in this report. Items on the Committee's work programme may have crime and disorder implications and these will need to be considered as part of the reports on those items.

9. Health and wellbeing implications

- 9.1. There are no direct health and wellbeing implications arising from the implementation of the recommendations in this report.

10. Report author and contact

If you have any questions about this report please contact: Timothy Andrew (Scrutiny Manager), timothy.andrew@lewisham.gov.uk (020 8314 7916)

¹ See <https://lewisham.gov.uk/TacklingTheClimateEmergency> for a summary of the Council's work in this area.

Appendix A

The following roles are common to all select committees:

(a) General functions

- To review and scrutinise decisions made and actions taken in relation to executive and non-executive functions
- To make reports and recommendations to the Council or the executive, arising out of such review and scrutiny in relation to any executive or non-executive function
- To make reports or recommendations to the Council and/or Executive in relation to matters affecting the area or its residents
- The right to require the attendance of members and officers to answer questions includes a right to require a member to attend to answer questions on up and coming decisions

(b) Policy development

- To assist the executive in matters of policy development by in depth analysis of strategic policy issues facing the Council for report and/or recommendation to the Executive or Council or committee as appropriate
- To conduct research, community and/or other consultation in the analysis of policy options available to the Council
- To liaise with other public organisations operating in the borough – both national, regional and local, to ensure that the interests of local people are enhanced by collaborative working in policy development wherever possible

(c) Scrutiny

- To scrutinise the decisions made by and the performance of the Executive and other committees and Council officers both in relation to individual decisions made and over time
- To scrutinise previous performance of the Council in relation to its policy objectives/performance targets and/or particular service areas
- To question members of the Executive or appropriate committees and executive directors personally about decisions
- To question members of the Executive or appropriate committees and executive directors in relation to previous performance whether generally in comparison with service plans and targets over time or in relation to particular initiatives which have been implemented
- To scrutinise the performance of other public bodies in the borough and to invite them to make reports to and/or address the select committee/Business Panel and local people about their activities and performance
- To question and gather evidence from any person outside the Council (with their consent)
- To make recommendations to the Executive or appropriate committee and/or Council arising from the outcome of the scrutiny process

(d) Community representation

- To promote and put into effect closer links between overview and scrutiny members and the local community
- To encourage and stimulate an enhanced community representative role for overview and scrutiny members including enhanced methods of consultation with local people
- To liaise with the Council's ward assemblies so that the local community might participate in the democratic process and where it considers it appropriate to seek the views of the ward assemblies on matters that affect or are likely to affect the local areas, including accepting items for the agenda of the appropriate select committee from ward assemblies.
- To keep the Council's local ward assemblies under review and to make recommendations to the Executive and/or Council as to how participation in the democratic process by local people can be enhanced
- To receive petitions, deputations and representations from local people and other stakeholders about areas of concern within their overview and scrutiny remit, to refer them to the Executive, appropriate committee or officer for action, with a recommendation or

report if the committee considers that necessary

- To consider any referral within their remit referred to it by a member under the Councillor Call for Action, and if they consider it appropriate to scrutinise decisions and/or actions taken in relation to that matter, and/or make recommendations/report to the Executive (for executive matters) or the Council (non-executive matters).

(e) Finance

- To exercise overall responsibility for finances made available to it for use in the performance of its overview and scrutiny function.

(f) Work programme

- As far as possible to draw up a draft annual work programme in each municipal year for consideration by the overview and scrutiny Business Panel. Once approved by the Business Panel, the relevant select committee will implement the programme during that municipal year. Nothing in this arrangement inhibits the right of every member of a select committee (or the Business Panel) to place an item on the agenda of that select committee (or Business Panel respectively) for discussion.
- The Council and the Executive will also be able to request that the overview and scrutiny select committee research and/or report on matters of concern and the select committee will consider whether the work can be carried out as requested. If it can be accommodated, the select committee will perform it. If the committee has reservations about performing the requested work, it will refer the matter to the Business Panel for decision.

(g) In addition to the general terms of reference outlined above, the Sustainable Development Select Committee has the following specific terms of reference:

- to examine issues relating to the protection of the environment including 'green' issues such as the conservation of natural resources, air quality, energy efficiency and conservation and/or the reduction of all types of pollution and make recommendations to the Mayor and Cabinet as appropriate;
- to comment and consult on and make recommendations to the Mayor and Cabinet in relation to the following:
 - i. sustainable development, economic development, business support, employment and training;
 - ii. the formulation of the Council's planning policies, (including the preparation of the Council's Local Development Documents and other local plans for the use and development of land, but excluding planning control and building control functions);
 - iii. highways, parking, traffic and transport, and urban regeneration;
 - iv. the environment including waste disposal, environmental health, street and market trading (but not the granting of licences and related matters);
 - v. public protection, refuse collection and disposal, street cleaning, consumer protection, cemeteries and crematoria;
 - vi generally to examine the performance of the Mayor and Cabinet in relation to the matters listed at (i) to (v) above.
- the review and scrutiny of the exercise by risk management authorities of flood risk management and coastal erosion risk management affecting the area.

Appendix B- Effective Scrutiny Guidelines

At Lewisham we:

1. Prioritise

It is more effective to look at a small number of key issues in an in-depth way, than skim the surface of everything falling within scrutiny's remit. We try to focus on issues of concern to the community and/or matters that are linked to our corporate priorities. We only add items to the work programme if we are certain our consideration of the matter will make a real and tangible difference.

2. Are independent

Scrutiny is led by Scrutiny Members. Scrutiny Members are in charge of the work programme and, for every item, we specify what evidence we require and what information we would like to see in any officer reports that are prepared. We are not whipped by our political party or unduly influenced by the Cabinet or senior officers.

3. Work collectively

If we collectively agree in advance what we want to achieve in relation to each item under consideration, including what the key lines of enquiry should be, we can work as a team to question witnesses and ensure that all the required evidence is gathered. Scrutiny is impartial and the scrutiny process should be free from political point scoring and not used to further party political objectives.

4. Engage

Involving residents helps scrutiny access a wider range of ideas and knowledge, listen to a broader range of voices and better understand the opinions of residents and service users. Engagement helps ensure that recommendations result in residents' wants and needs being more effectively met.

5. Make SMART evidence-based recommendations

We make recommendations that are based on solid, triangulated evidence – where a variety of sources of evidence point to a change in practice that will positively alter outcomes. We recognise that recommendations are more powerful if they are:

- Specific (simple, sensible, significant).
- Measurable (meaningful, motivating).
- Achievable (agreed, attainable).
- Relevant (reasonable, realistic and resourced, results-based).
- Time bound (time-based, time limited, time/cost limited, timely, time-sensitive).

This page is intentionally left blank

Sustainable Development Select Committee work plan 2022-23

Item	Type	Priority	20-Jun-22	11-Oct-22	30-Nov-22	10-Jan-23	24-Apr-23
Flood risk management strategy	Performance monitoring	CP6					
Air quality action plan	Policy development	CP6					
Asset management	Policy development	CP6, CP4					
Planning service: local democracy review	Policy development	CP6, CP4					
Environmental crime enforcement team update	Performance monitoring	CP6					
Controlled parking zone programme	Policy development	CP6, CP4					
Budget cuts	Standard item	All					
Local plan update	Information item	All					
Regeneration of Catford Town Centre update	Standard item	CP6, CP4					
Climate emergency action plan	Performance monitoring	CP6					
Parks and open spaces update	Policy development	CP6					
Implementation of the transport strategy: walking cycling and healthy neighbourhoods	Performance monitoring	CP6					

Information items

Article 4 directions	Information	CP6					
Annual parking report	Information	CP6					
Biodiversity action plan update	Information	CP6					
Parks and Open Spaces Strategy Annual Monitoring Report	Information	CP6					
Reduction and recycling plan	Information	CP6, CP4					
Employment, jobs and skills	Information	CP6, CP4					
Major planning developments update (incl Bakerloo line)	Information	CP6, CP4					

Corporate Priorities**Priority**

1	Open Lewisham	CP 1
2	Quality Housing	CP 2
3	Children and Young People	CP 3
4	A Strong Local Economy	CP 4
5	Health & Wellbeing	CP 5
6	Cleaner and greener	CP 6
7	Safer Communities	CP 7

FORWARD PLAN OF KEY DECISIONS

Forward Plan April 2023 - August 2023

This Forward Plan sets out the key decisions the Council expects to take during the next four months.

Anyone wishing to make representations on a decision should submit them in writing as soon as possible to the relevant contact officer (shown as number (7) in the key overleaf). Any representations made less than 3 days before the meeting should be sent to Emma Aye-Kumi, the Local Democracy Officer, at the Council Offices or emma.aye-kumi@lewisham.gov.uk. However the deadline will be 4pm on the working day prior to the meeting.

A “key decision”* means an executive decision which is likely to:

- (a) result in the Council incurring expenditure which is, or the making of savings which are, significant having regard to the Council’s budget for the service or function to which the decision relates;
- (b) be significant in terms of its effects on communities living or working in an area comprising two or more wards.

October 2022	Approval to procure for the provision of Fixed Asset Valuations	07/12/22 Executive Director for Corporate Services	Kathy Freeman, Executive Director for Corporate Resources and Councillor Amanda De Ryk, Cabinet Member for Finance and Strategy		
	Amersham Rd and Northover Conversion and Refurbishment Project Contract Award	10/05/23 Executive Director for Housing, Regeneration &	Stephen Sealy and		

FORWARD PLAN – KEY DECISIONS

Date included in forward plan	Description of matter under consideration	Date of Decision Decision maker	Responsible Officers / Portfolios	Consultation Details	Background papers / materials
		Environment			
March 2023	Appointment of Directors to Catford Regeneration Partnership Limited	10/05/23 Mayor and Cabinet	Kplom Lotsu, SGM Capital Programmes and		
March 2023	Approval of a 5 year Physical Activity Strategy and implementation plans	10/05/23 Mayor and Cabinet	Neville Graham, Sports and Leisure Service Manager and		
June 2022	Approval to appoint operator for concessions contract at Beckenham Place Park Lake	10/05/23 Mayor and Cabinet	Genevieve Macklin, Head of Strategic Housing and Councillor Andre Bourne, Cabinet Member for Culture and Leisure (job share)		
November 2022	Approval to confirm an Article 4 Direction to withdraw permitted development rights for the change of use from dwelling house (Use class C3) to small HMO's (Use Class C4)	10/05/23 Mayor and Cabinet	David Syme, Head of Strategic Planning and		
February 2022	BfL Programme - Approval to enter into contract	10/05/23 Mayor and Cabinet	James Ringwood, Housing Delivery Manager and Councillor Paul Bell, Cabinet Member for Health and Adult Social Care		
June 2022	Building for Lewisham Budget requirements Pt1 & Pt2	10/05/23 Mayor and Cabinet	James Ringwood, Housing Delivery Manager and Councillor Brenda Dacres, Deputy Mayor and Cabinet		

FORWARD PLAN – KEY DECISIONS					
Date included in forward plan	Description of matter under consideration	Date of Decision Decision maker	Responsible Officers / Portfolios	Consultation Details	Background papers / materials
			Member for Housing Development and Planning		
January 2023	Network Links (Circuits, broadband, PSTNs)	10/05/23 Mayor and Cabinet	and		
May 2022	On Street Advertising Contract Variation and Extension	10/05/23 Mayor and Cabinet	Tom Guise, Labour Political Assistant and Councillor Amanda De Ryk, Cabinet Member for Finance and Strategy		
March 2023	Permission to Award contract for School Kitchen Maintenance - Central Catering Contract	10/05/23 Mayor and Cabinet	Fiona Gavin, Senior Contracts Officer and Councillor Chris Barnham, Cabinet Member for Children's Services and School Performance		
	Permission to Establish and Call-Off a Framework via a Dynamic Purchasing System (DPS) for Taxis and Minibus Passenger Services	10/05/23 Mayor and Cabinet	and		
	Refugee Programme contract extension	10/05/23 Mayor and Cabinet	and		
	Supported Accommodation sites and leases	10/05/23 Mayor and Cabinet	Iain McDiarmid, Assistant Director - Adult Integrated Commissioning and Councillor Paul Bell, Cabinet Member for Health and Adult Social		

FORWARD PLAN – KEY DECISIONS

Date included in forward plan	Description of matter under consideration	Date of Decision Decision maker	Responsible Officers / Portfolios	Consultation Details	Background papers / materials
			Care		
March 2023	Tender for Council Insurance	10/05/23 Mayor and Cabinet	Karen Eaton, Group Manager, Insurance and Risk and Councillor Amanda De Ryk, Cabinet Member for Finance and Strategy		
January 2023	Adventure Playgrounds: Procurement of Play Service and Site Maintenance and Development Service	21/06/23 Mayor and Cabinet	and Councillor Chris Barnham, Cabinet Member for Children's Services and School Performance		
March 2023	Public Space Protection Order consultation outcome	21/06/23 Mayor and Cabinet	James Lee, Director of Communities, Partnerships and Leisure and Councillor Louise Krupski, Cabinet Member for Environment and Climate		
March 2023	Sustainable Transport and Parking Improvements programme - recommendations for Phase 1	21/06/23 Mayor and Cabinet	Martha Lauchlan, Cabinet Executive Officer and Councillor Louise Krupski, Cabinet Member for Environment and Climate		
March 2023	Approval of the councils updated Homelessness & Rough Sleeping Strategy 2023-26	19/07/23 Mayor and Cabinet	Fenella Beckman, Director of Housing and Councillor Sophie Davis, Cabinet Member for Housing Management and Homelessness		

FORWARD PLAN – KEY DECISIONS

Date included in forward plan	Description of matter under consideration	Date of Decision Decision maker	Responsible Officers / Portfolios	Consultation Details	Background papers / materials
November 2022	CIL Governance Proposals	19/07/23 Mayor and Cabinet	Julia Robins, BLE Planning Manager and		
	Cultural Strategy	19/07/23 Mayor and Cabinet	James Lee, Director of Communities, Partnerships and Leisure and Councillor Andre Bourne, Cabinet Member for Culture and Leisure (job share)		
March 2023	Dementia Strategy	19/07/23 Mayor and Cabinet	Tristan Brice, Associate Director, Community Support and Care and Councillor Paul Bell, Cabinet Member for Health and Adult Social Care		
March 2023	Tender for Council Insurances	20/09/23 Executive Director for Corporate Services	Karen Eaton, Group Manager, Insurance and Risk and Councillor Amanda De Ryk, Cabinet Member for Finance and Strategy		
	Approval to enter into contract - Drakes Court development	01/11/23 Mayor and Cabinet	Eleanor Davies, Associate Director Joint Mental Health Commissioning and Councillor Brenda Dacres, Deputy Mayor and Cabinet Member for Housing Development and Planning		

FORWARD PLAN – KEY DECISIONS					
Date included in forward plan	Description of matter under consideration	Date of Decision Decision maker	Responsible Officers / Portfolios	Consultation Details	Background papers / materials
December 2022	Ladywell - Budget requirement	06/12/23 Mayor and Cabinet	James Ringwood, Housing Delivery Manager and Councillor Brenda Dacres, Deputy Mayor and Cabinet Member for Housing Development and Planning		
December 2022	Mayfield - Budget Requirement	06/12/23 Mayor and Cabinet	James Ringwood, Housing Delivery Manager and Councillor Brenda Dacres, Deputy Mayor and Cabinet Member for Housing Development and Planning		
January 2023	Annual progress update on the Autism Strategy Action Plan	24/01/24 Mayor and Cabinet	and		

FORWARD PLAN – KEY DECISIONS

Date included in forward plan	Description of matter under consideration	Date of Decision Decision maker	Responsible Officers / Portfolios	Consultation Details	Background papers / materials

This page is intentionally left blank